



KABIL

INTEGRATED INDUSTRIAL ESTATE

BATAM ISLAND
INDONESIA.



PT. KABIL CITRANUSA

Exclusively Created for Energy Related Industry



Incorporated in Jakarta, since 1979 the Group has vastly diversified into 4 main business division in Batam :

1. Manufacturing Division

- Manufacturing of oil country tubular goods (OCTG), drill pipes
- Manufacturing of large diameter structural steel and line pipes
- Manufacturing of premium connection and accessories
- Rig building, construction of steel structures to support Oil & Gas exploration

2. Infrastructures Division

- Development of Industrial Estate, staff housing
- Project management & consultant
- Citranusa Kabil International Cargo Port with its integrated logistics services
- Outsourcing agent & Logistics base for Oil Coys

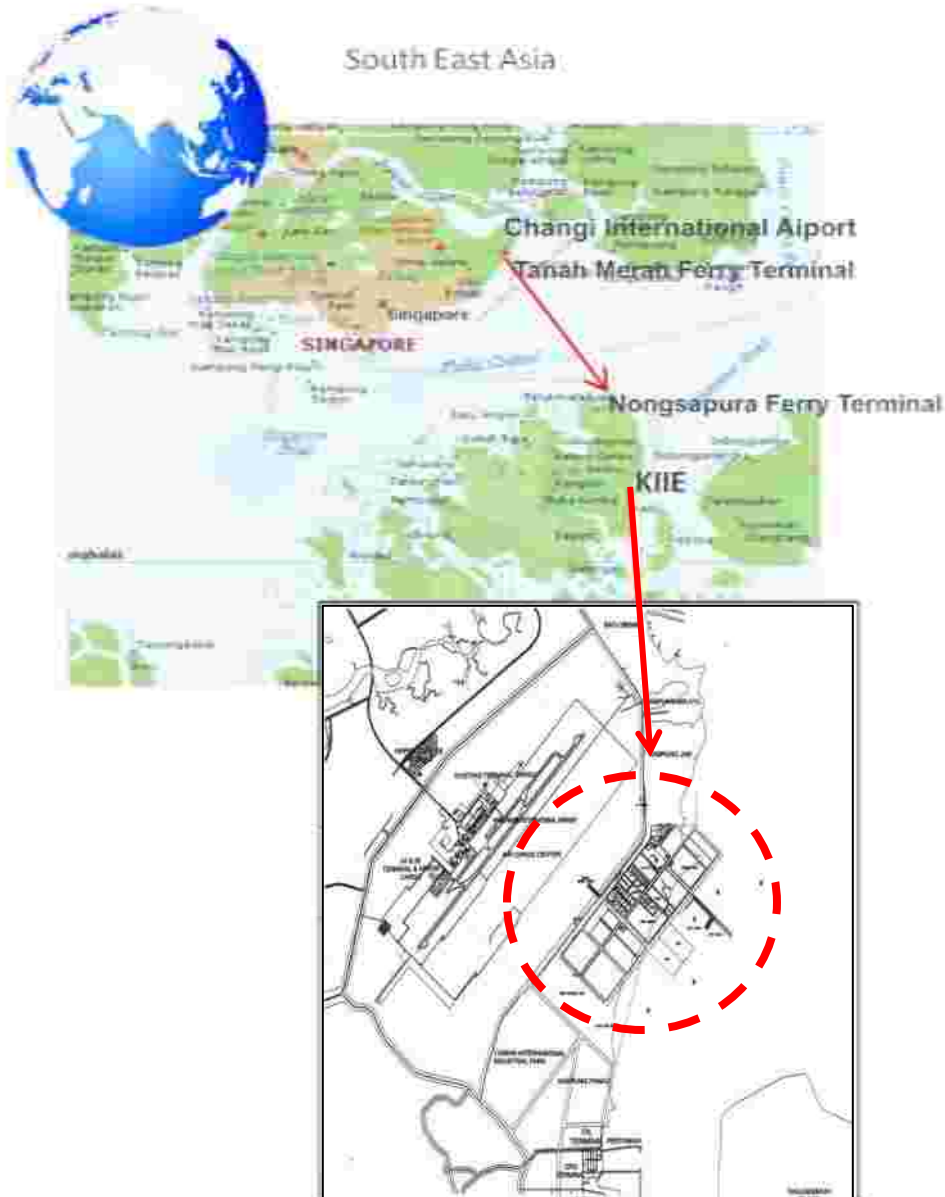
3. Resorts Division

- Turi Beach Resort, a Balinese cottage-style resort hotel
- Nongsa Point Marina, a marina cum resort chalet for rent/purchase
- Tamarin Santana Golf Course
- Taman Nongsa Indah Village holiday bungalows for rent/purchase
- Nongsa pura Ferry Terminal to connect Nongsa, Batam to Tanah Merah Ferry Terminal, Singapore

4. Digital Economy Cluster

- Multimedia & Creative Industries: film production, animation studio, backlot, post production
- Digital park, IT office for start up incubator & co-working space, Data Centre, IT Academy, Commercial Centre

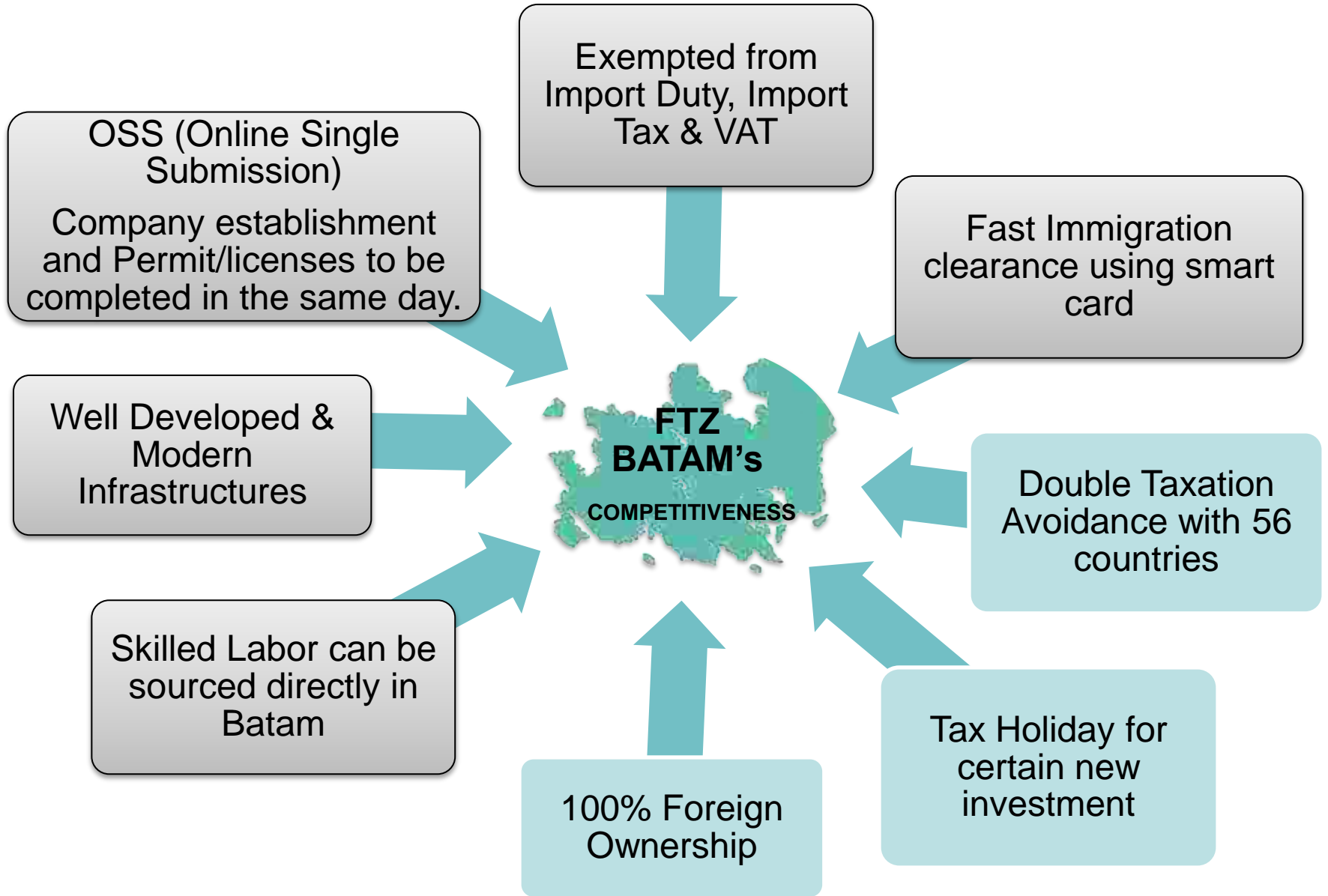
STRATEGIC LOCATION



Kabil Integrated Industrial Estate / KIIIE is strategically located in Batam Indonesia's Free Trade Zone Island, at Malacca Strait connecting the international shipping route between the Indian and the Pacific Ocean.

Lies only 20 kilometers to the southeast Singapore which has one of the busiest seaports in the world passing by over 70,000 ships annually.

KIIIE is within easily reach of the ferry terminal and airport. Travelling from Singapore to Batam is a convenient 40 minute ferry ride and just a 10-minute drive from KIIIE is Batam's Hang Nadim Airport, with 50 daily flights from/to main cities in Indonesia and international flight to Kuala Lumpur.



SITE PLAN KIIE

Spanning over 540 Ha of prime waterfront land, KIIE is focusing on Oil & Gas related industry with the full support of the International Cargo Port located within the Industrial Estate



Google Earth View



KIIE's One Stop Services

KIIE is gazetted as one of the NATIONAL VITAL OBJECT in Indonesia.

KIIE offers “One Stop Services” to investor covering:



Corporate or legal service, incl. License / Permit applications

Architectural and engineering consultancy services

Human resources planning and recruitment

Accommodation for Top Management and housing / dormitories for staff & workers

Worker's Facilities, such as Football Stadium, Mosque, Church, etc

Integrated logistics services with 1-roof Custom, Immigration, Quarantine and Port (CIQP) clearance

International Public Port within the industrial estate

OSS (Online Single Submission)

1. Login & fill up the data



- Login pada Sistem OSS menggunakan **User ID** dan **Password**;
- Mengisi data-data yang diperlukan, seperti : data perusahaan, pemegang saham, kepemilikan modal, nilai investasi, rencana penggunaan tenaga kerja, rencana permintaan fasilitas perpajakan dan kepastian.

2. Wait & get notification



Pelaku usaha akan menerima **notifikasi** dari OSS untuk **mengubah jenis bidang usahanya**, jika bidang investasi yang diinput tidak memenuhi ketentuan **Daftar Negatif Investasi (DNI)**.

OSS publish the legal document



- Sistem OSS menerbitkan **Nomor Induk Berusaha (NIB)** untuk pelaku usaha.
- Pelaku usaha dapat memperoleh **dokumen pendaftaran lainnya bersamaan dengan penerbitan NIB** (jika diperlukan).

Catatan:

Khusus untuk BPJS Ketenagakerjaan dan BPJS Kesehatan, nomor kepesertaan yang diperoleh hanya akan diaktifkan menjadi **Sertifikat Kepesertaan BPJS** setelah dilakukan pembayaran premi bulan pertama berdasarkan pemberitahuan virtual account dari BPJS kepada pelaku usaha.

KIIE also gazetted with OSS facility – Online Single Submission Program Launched by Indonesia Government which basically allows the investor the convenience of applying company's legal establishment permit/licenses to be completed in the same day.

KLIK facility (Direct Construction Services)

25.	Industrial Park II Kawasan Industri Kabil Integrated Industrial Estate	- PT Kabil Citranusa (KCN) - PT Kabil Indonesia Estate (KIE)	Kepulauan Riau Kota Batam, Provinsi Kepulauan Riau
26.	Kawasan Industri West Point Maritime Industrial Park	PT. Batam Sentralindo	Kota Batam, Provinsi Kepulauan Riau
27.	Kawasan Industri Dumai	PT. Kawasan Industri Dumai	Kota Dumai, Provinsi Riau
28.	Kawasan Industri Kariangau	Perusahaan Daerah Kota Balikpapan	Kota Balikpapan, Provinsi Kalimantan
			Riau

In 2017 Kabil Integrated Industrial Estate gazetted as one of 32 industrial estates in Indonesia to be provided with KLIK program

KEPALA BADAN KOORDINASI PENANAMAN
MODAL REPUBLIK INDONESIA,
ttd.
THOMAS TRIKASIH LEMBONG

KLIK facility (Direct Construction Services), a program launched by Indonesia Investment Coordinating Board which allows the investor **to immediately proceed with the construction of their manufacturing plant upon legal company establishment**, whilst at the same time/in parallel applying for UKL/UPL, Fatwa Planologi, Building Permit/IMB, and all other applicable permits.

Importantly is that all Permits should have already been obtained before construction completed and prior to commencement of the commercial production.

FACILITIES & INFRASTRUCTURES



Power Plant (Co-operation with PLN Batam, a state owned company)

Within the estate PLN Batam operating 30 MW Power Plant and 150 KV Gas Insulated Switchgear (GIS), aligned with the current 522 MW electricity network for the island.

EXISTING TARIFF FOR POWER SUPPLY FOR REFERENCE

TARIFF GROUP		DEMAND CHARGE (Rp/KVA/Month)	USAGE CHARGE (Rp/KWH)	CONNECTION CHARGE (Rp/VA)	DEPOSIT PLEDGE
I-1/TR	450 VA to 900 VA	34,999	Blok I < 120 hours = 936 Blok II > 120 hours = 935	Up to 2,200/VA Rp 1,200,-/VA	Rp 234,-/VA
I-1/TR	1300 VA to 14 KVA	41,713	Blok I < 120 hours = 936 Blok II > 120 hours = 935		
I-2/TR	Above 14 KVA to 200 KVA	43,841	Blok WBP = 1,105 BlokLWBP = 1,004 kVArh = 1,057	2,200 VA to 197,000 VA Rp 1,250,-/VA	Rp 264,-/VA
I-3/TM	Above 200 KVA	37,140	Blok WBP = 1,066 BlokLWBP = 968 kVArh = 1,200	Rp 900,-/VA	200 KVA to 5,000 KVA Rp 300,-/VA
I-4/TT	Above 30,000 KVA	34,650	Blok WBP = 1,066 BlokLWBP = 968 kVArh = 1,200	Rp 750,-/VA	5,000 KVA to 30,000 KVA & above Rp 300,-/VA

FACILITIES & INFRASTRUCTURES



Industrial Water

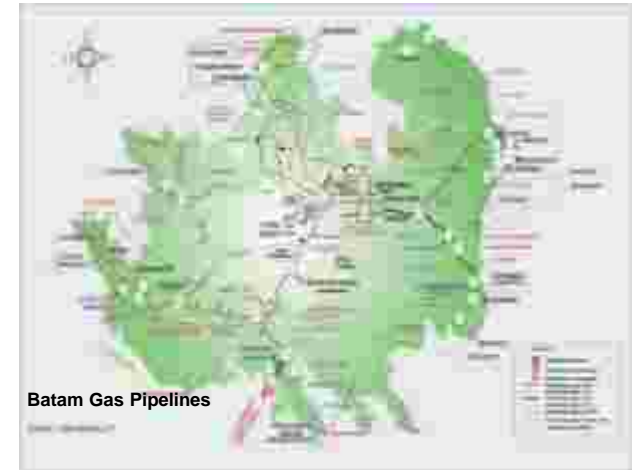
The Estate has 2 water resources, from a private - government JV coy and from KIIE's own 6 Ha - water reservoir with current capacity of supplying u/t 3,000 m3 treated water daily and could be increased per demand.

Installation Fee : USD 2,800/connection

Water tariff : IDR 12,500/m3

FACILITIES & INFRASTRUCTURES

Indonesia
Integrated Gas Transmission Pipelines



Gas Pipe Line

Gas supply by Government through PGN using the Grissik-Batam-Singapore transmission pipeline, carrying gas from the ConocoPhillips & PetroChina field to Batam with volumes in excess of 800 MMScfd (Million Standard Cubic Feet per Day) or 22.6 million m³/day transmitted through its 5,900 km long transmission and distribution pipeline network.

Gas rate at USD 7.22/MMBtu – 7.38/MMBtu

FACILITIES & INFRASTRUCTURES



GATE WITH OPTIMUM SAFEGUARDS & FENCING AROUND THE ESTATE



MEDICAL FACILITIES WITH READY AMBULANCE UNIT

ESTATE FIRE FIGHTER UNIT

ROUND THE CLOCK SECURITY AND 24 HOURS CCTV SYSTEM



CPPI LOGISTICS GROUP



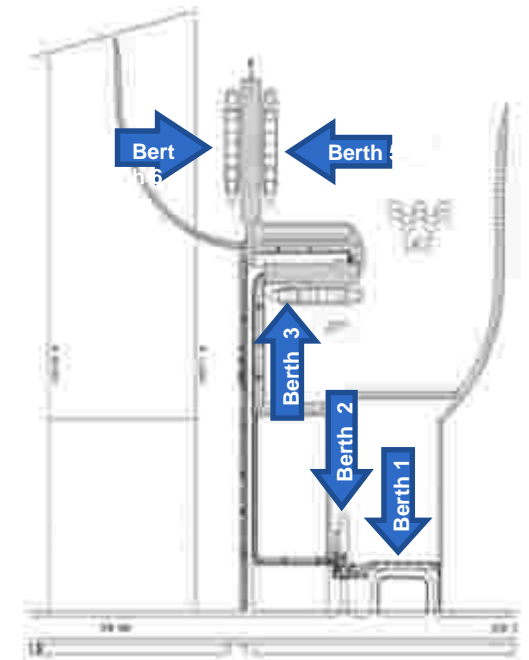
FACILITIES & INFRASTRUCTURES

CITRANUSA KABIL PORT / CKP - INTERNATIONAL PUBLIC SEA PORT

- CKP is one of the 3 Governments designated Free Trade Zone Ports in Batam
- Located within KIIE serves as main gate for import of raw material, capital goods and export of finished goods.
- An ISPS Code / International Code For The Security of Ships & Port Facilities which enable vessels sail direct to / from Kabil to overseas.
- Familiar with AQIS / Australian Quarantine & Inspection Services.

PORT INFORMATION :

- **Berth 1 (length 130 m)** - for Tug & barges up to 2,000 DWT with water draft up to 5m LWS
- **Berth 2 (roro ramp)** - for RoRo operation with Landing Craft /LCT, water draft up to 5m LWS
- **Berth 3 (length 176 m)** - for berthing of Vessel up to 30.000 DWT with water draft up to 10m LWS.
- **Berth 5 & 6 (@ length 277.5 m)** - for berthing of Vessel up to 50.000 DWT with water draft up to 12.5m LWS





PT. Sarana Citranusa Kabil (SCN)

SCN is the Owner / Manager of Citranusa Kabil. SCN is one of the FTZ Ports in Batam. SCN has 6 berths and is compliant with the International Security and Port Facility Securities (ISPS) Code.

PT. Pelayaran Citranstirta Tatarasana (CITA)

- Ship Agency
- Ship Chartering / Vessel Management
- Ship Chandling
- Lay Up Handling

PT. Citramadya Cargindo (CMC)

- Project / Heavy Cargo Handling
- Stevedoring



PT. Citra Pembina Pengangkutan Industries (CPPI)

- Supply Chain Management
- Inventory Management
- Material and Freight Handling Management
- Warehousing, Open Yard Store and Distribution
- Sea Freight Forwarding
- Equipment Rental
- Document Clearance
- Outsourcing Agency



PT. Citra Pembina Logistik (CPL)

- Container and Loose Cargo Transportation
- FCL/LCL shipment





BERTH 6

MV. RED ZED II
LOA = 217 mtr
GT = 37.071 T

BERTH 5

MV. PALERMO
LOA = 111 mtr
GT = 6.274 T

BERTH 3

MV. SBC ASIA
LOA = 120 mtr
GT = 7.914 T

PT. NAUTIC MARITIME SALVAGE

5 Years Rental with 3,706 m² (109m x 34m)

Lay Out

LGT. DIPTA JAYA MANDIRI
SB. HAI BAO 2

Reclamation Material
LGT. TRANGINDD II

SV. LIMIN ROSMINA/ BG. LANPAN CB7
SV. HALEY SARAH/ BG. LANPAN CB8
Double berthing at Berth 1

BERTH 2

BERTH 1

Managed by
PT. SARANA CITRANUSA KABIL

PORT BASE FACILITIES

To support oil & gas industries requirements such as stacking & staging point for offshore drilling & operational logistic base.

Our existing clients includes : Conoco Phillips, Medco, Premier Oil, Inpex Masella, Parker Drilling, Bredero Shaw, Citra Tubindo Tbk, DSAW, Lundin, Japan Drilling, etc.

 ConocoPhillips

 PremierOil

 Lundin

 INPEX

 PARKER DRILLING

 JDC JAPAN DRILLING COMPANY



Open Yard



CIQP Building with Electronics Data processing facility



Conoco Phillips Logistic Office

Warehouse



Type 2 Warehouse

Building area : 1,872 m²

Land area : 2,352 m²

Floor loading : 3.5ton / m²



Type S Warehouse

Building area : 2,151 m²

Land area : 2,944 m²

SUPPORTING FACILITIES

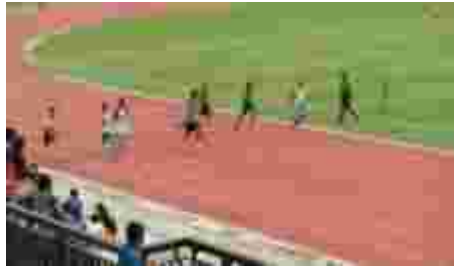
for staff/worker's welfare

SUPPORTING FACILITIES

for staff/worker's welfare

DORMITORY :

- Co-operates with Government, BPJS build dormitories located within the industrial estate.
- 10 blocks twin tower to accommodate u/t 4,000 workers, cum medical centre, provision shop, canteen.
- With expansion plan of another 10 blocks to accommodate additional 4,000 workers.
- Rental price is subsidized from USD 10 - USD13/person/month



SPORT STADION :

- Capacity = 2.000 persons
- 100 seats for VIP
- International Football Field
- 8 running tracks with international standard

SUPPORTING FACILITIES

for staff/worker's welfare



- A central mosque with a capacity up to 2.000 worshippers for moslem's workers and local neighbourhood.
- Multi Purpose Hall for other worshipers, with the capacity up to 200 peoples
- Commercial Area consist of 362 Shop houses for SME / Small Medium Enterprices, Provision Shops, Canteen/Eateries, Banking facilities : BNI'46, Bank Mandiri, restaurant, food court, futsal field, etc.



Our General Hospital is currently in operation to serve for emergency care, medical treatment, both for industrial employees and to serve local community as part of our CSR Program.

HOSPITAL FACILITIES

- 19 wards with 90 beds
- Surgery Rooms
- Delivery Rooms, NICU, & Child Care
- Radiologi Services & UGD



SUPPORTING FACILITIES

for expatriates & managerial staffs

SUPPORTING FACILITIES FOR EXPATRIATES & MANAGERIAL STAFFS

Just a 10 minutes drive from Kabil Industrial Estate, our Nongsa Resorts provides:



Marina with 65 floating pontoon berth, able to accommodate yacht up to 120ft long, 150 villas for sale and lease, 29 hotel rooms



9- hole Golf Course
1st Asian Jack Nicklaus designed course



Nongsapura Ferry Terminal

International Ferry terminal, to connect Nongsa, Batam – Tanah Merah, Singapore.
Closest proximity between Batam and Singapore (only 40 minutes), with 10 – 15 return trips per day



Nongsa Point Marina

Turi Beach Resort

Nongsa Village

Tamarin Golf Course

Kinema Studio

Nongsa Digital Park

The Scene / Movie Town



143 room resort hotel with meeting room facilities



100 sea facing villas for sale and lease



130 unit apartment hotel and 50 unit villa in exotic resort styles well as retails

SUPPORTING FACILITIES FOR EXPATRIATES & MANAGERIAL STAFFS

TURI BEACH RESORT - <http://www.turibeach.com>



Immerse yourself in this Indonesian boutique paradise and explore the beauty of nature.

Nestled in Nongsa Resorts, at the northeast part of Batam Island, and 35 minutes away from Singapore by ferry and 15 minutes from Hang Nadim Airport.

Set amid 7.7 hectares of beautiful green landscaping in a tranquil tropical village, Turi Beach Resort features Modern - Minimalist accomodation in Tirta wing and Riau – Balinese in Riani wing. All 142 rooms and suites are facing the sea being well spread over the beach front and the hillside.

Turi Beach Resort is your idyllic retreat in the tropical Riau Islands amidst unspoilt beauty and fine beaches where tranquility and impeccable service are rightly yours to savour.



TIRTA WING



RIANI WING

SUPPORTING FACILITIES FOR EXPATRIATES & MANAGERIAL STAFFS

NONGSA POINT MARINA - <http://www.nongsapointmarina.com>



A yachting gateway to the Riau Islands, Nongsa Point Marina is a premier resort with international marina facilities and residential properties.

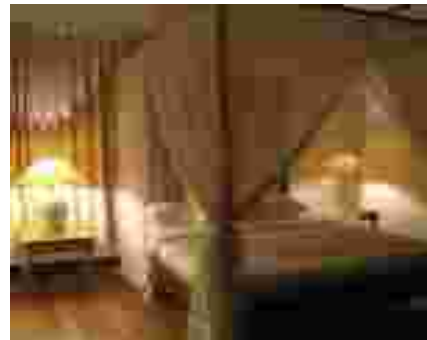
Built around a natural cove in Batam Island, Indonesia, it is truly a unique waterfront destination offering a haven of peace and pampering to those looking for a privileged lifestyle, with impressive berthing facilities for boat owners.

Hotel Rooms : 29 rooms including 2 suites
Chalets : 51 two and three-bedroom chalets
Apartments : 12 three – bedroom units

For chalet and apartment consist of fully furnished living room, kitchen and dinning room.

SUPPORTING FACILITIES FOR EXPATRIATES & MANAGERIAL STAFFS

TAMAN INDAH NONGSA VILLAGE - <http://www.nongsavillage.com>



Nongsa Village Resort Club lets you enjoy the old-world charm with all the modern conveniences you need.

This private community of 100 traditional Indonesian wooden villas is nestled among lush vegetation and tall trees lining the seashore.

The Nongsa Village Club has its own beach, swimming pool, and fishing jetty, as well as easy access to local restaurants, sports activities, and shopping centre.



STAY IN TRANQUILITY

Tropical Hardwood Villas

Living Room, Kitchen,
Bed Room & Bath Room

Exclusivity · Pleasure · Privacy

SUPPORTING FACILITIES FOR EXPATRIATES & MANAGERIAL STAFFS

TAMARIN-SANTANA GOLF CLUB - http://www.nongsaresorts.com/tamarin_santana.htm



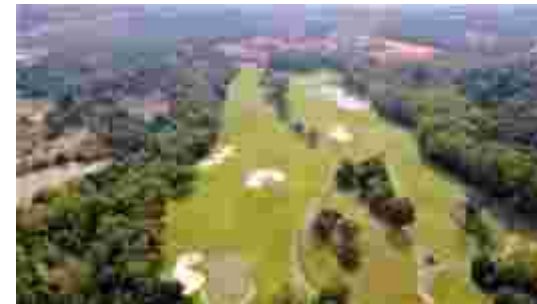
Tamarin Santana Golf Course is a 9-hole - par 36 - regulation course located in Nongsa Resorts only 35 minutes away by ferry from Tanah Merah ferry terminal in Singapore to Nongsapura ferry terminal in Batam.

Designed by Jack Nicklaus, is one of the most popular golf courses in Batam Island, Riau Archipelago, Indonesia.

With gentle rolling mounds, strategically placed grass bunkers and water hazards, landing your shoot will require an extra touch of focus and ability. It features a fine-looking rolling layout with ancient trees framing most fairways asides lateral hazards, some narrow fairways and fast well bunkered greens.

This course is perfect for a great game of golf or for a good practice round to prepare you for any of the surrounding championship courses. The well maintained greens and fairways, tall tree lines and sand straps are strategically placed throughout the course making it challenging and fun to play.

With its unique and distinctive landscape and surroundings, the golf club is ideal for pre-wedding and models photo-video sessions, fun-day and celebrations events, team building activities and al-fresco destination dining amongst others.





Developed & on-operational properties :

A	Nongsa Point Marina	24,57 Ha
B	Turi Beach Resort	11,76 Ha
C	Nongsa Village	10,00 Ha
D	Nongsa Terminal Bakau	3,00 Ha
E	Kinema Studio	7,66 Ha
F	Golf Course	35,98 Ha
	Total	92,97 Ha

Project in progress :

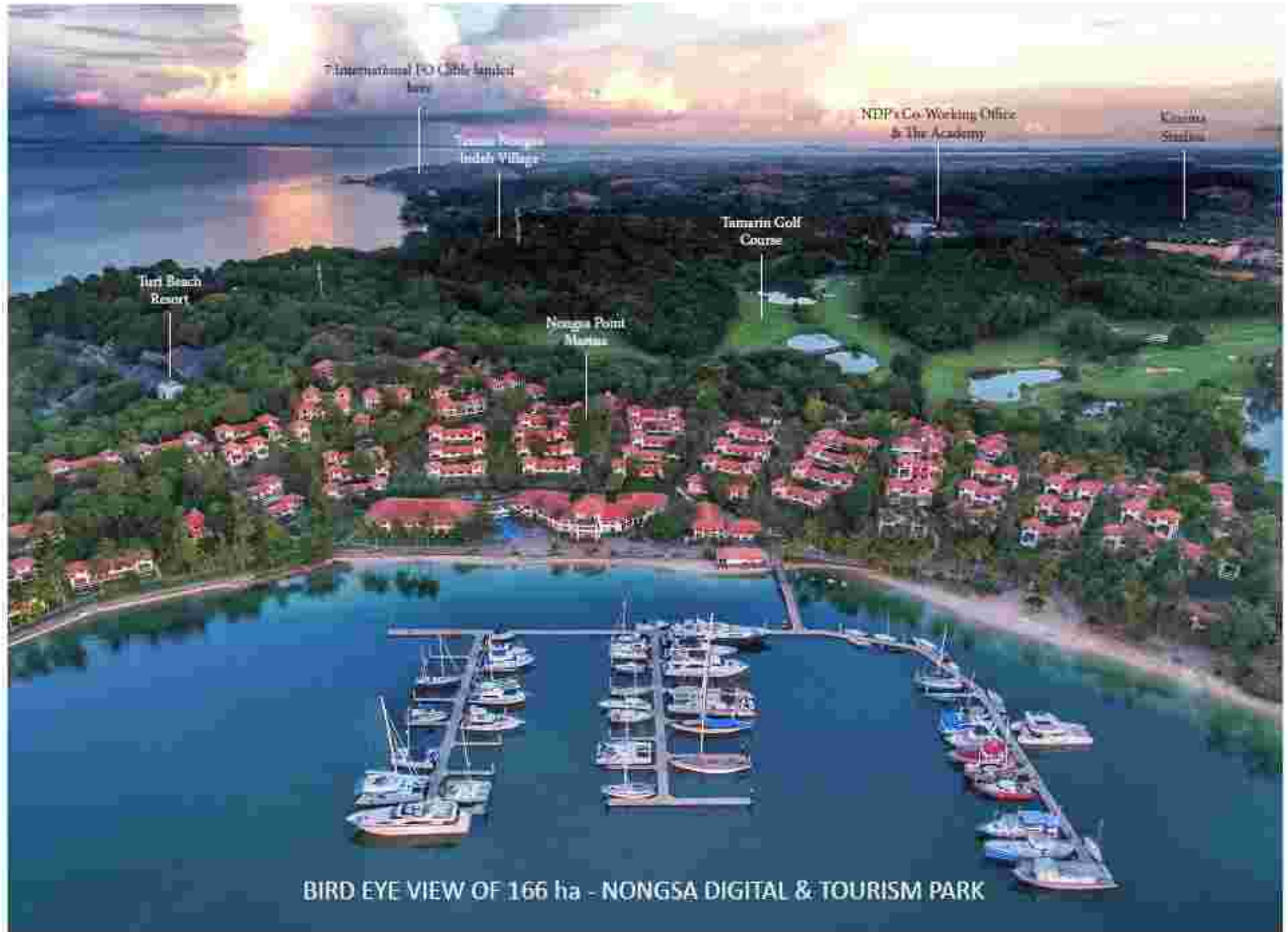
G	Movie Town	3,16 Ha
H	IT Office	1,75 Ha
I	Data Centre	3,70 Ha
	Total	7,61 Ha


Project to be built :

J	Data Centre	9,10 Ha
K	Dormitory	1,65 Ha
L	Mixed Use	1,95 Ha
M	Premium Mixed Use	0,84 Ha
N	Life Style Centre	1,35 Ha
O	Villa Residential	9,54 Ha
P	Premium Outlet	3,81 Ha
Q	International School	3,60 Ha
R	Commercial Area	3,27 Ha
S	Retirement Village	6,21 Ha
T	Cliff Side Hotel	6,69 Ha
U	Case Turn	1,87 Ha
V	Cliff Side Hotel	6,27 Ha
W	Service Centre	8,72 Ha
	Total	65,87 Ha

Nongsa Digital Park is an integrated development of resorts and digital park operated by Citramas Group, providing a place for digital businesses to grow within the hotel, chalets, villa, golf course to the world-class marina and animation & film studio. Located on the eastern side of Batam on the high topography sloping down to the scenic beaches, away from the seismic fault lines, and close to the international submarine fibre optic landing, Nongsa Digital Park offers an ideal and much safer geographical location for Work, Live and Play. Nongsa Digital Park with **total development area set at 166 ha** is to become one of the main digital economy gateways in Indonesia while at the same time reinforcing Nongsa as one of the preferred destinations for domestic and international tourism within Riau Islands.







Our vision is to become one of Asia's leading producers of Film, TV and Digital Media content for a global audience.



Leveraging 13 years of experience in IT/Creative industry gives Citramas Group the full confidence in setting up an IT Park next to the Studio within the Nongsa Integrated Resorts.

Infinite Frameworks /Kinema Studio was established in 2005. Today we employed u/t 400 young Indonesian animators from all over Indonesia.

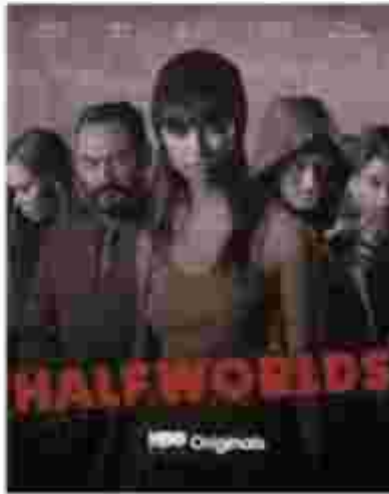
Our young talents had proven that we can produced an international quality products by winning 4 Grammys Award over 3 years for the Peter Rabbit animation film produced from our studio.

Our vision is to become one of Asia's leading producers of Film, TV and Digital Media content for a global audience.

— Infinite Framework's Portfolio

Animation Production

Garfield 1-3, Franklin and Friends, Peter Rabbit 1-2, Vamperina, Zack and Quack, Sonic Boom, Octonauts, Rollbots, Chicken Town, Tatsumi, Ella the Elephant, Shutterbugs, Leonard, Sing to the Dawn.



Film & Mini Series Production

Agent 47, Tanglin, Master Chef Asia, Dead Mine, Serangon Road, Mata – Mata, Joker's Game, 1965, Halfworld, Headshoot, Beyond Skyline, for HBO Asia, Media Corps Singapore, ABC.



Plot for Data Center

Co-working space
Unit 4,5,6

IT Academy

Co-working space
Unit 1,2,3

Co-working space unit 4,5,6 at NDP with built up space of 792m² per unit



LPK Infinite Learning (under PT Kinema Systrans Multimedia) had signed up with PT Apple Indonesia for 3rd Apple Academy in Indonesia.

First batch students for Foundation Course has started in Aug'19 at temporary Academy at Kinema's Studio. By 1st March 2020 the Academy will start from the new 1,500 m² - building .

Apple Developer Academy

Open for
18+ Everyone

When
Mar 2020 - Dec 2020

The Apple Developer Academy @Infinite Learning is a commitment to empower Indonesia's economy by creating world-class developers for the world's most innovative and vibrant app ecosystem.

The 10-month journey helps you to develop your own apps and become a well-rounded professional. It will sharpen your leadership skills to build a team, collaborate effectively, and set yourself apart in your CV.

Apply Now





2 Data Centre @ 890 racks
6,000m2 General Administration & Power House



Safe location being situated outside of “Ring of Fire” Indonesia



The eminence of international submarine fibre optic cable landing approx 2.5km from NDP, link it directly with various part of Indonesia, Singapore and the US West Coast will make NDP as an ideal place for Data Centre in Indonesia also a potential Data Centre for Asia Pacific.

With the ability to draw more data centre business to the island it will attract more private sector to strengthen IT structure in Content and Digital Media Industry at NDP.

Commercial Centre at Nongsa digital Park

A commercial center included shophouses to be built for Restaurant, Café, Gym, Mini Shops, Wellness center, Office Space, Dormitories to take care the needs of the IT staffs at NDP.



THE EDUCATED STREET



THE COURTYARD



ECO - DIGITAL PROJECT - a JV within Citramas group & Sinar Mas Group.



I'm coming

Nongsapura Terminal

I'm coming

I'm coming

Sea-View Offices

Co-working
Co-living
Amenities
Hive

Local
Flavour
Shophouses

Future
Ready
Pavilion

Events
Plaza

Sheltered
Walk

Co-learning
Co-dining
Fusion Hubs

Treetop
Walk

River-view
Tech Campus

River
Cafe

Fishermen's
Market

Eco Pod
Offices

More
Shophouses

SOFO
Offices

Mangrove
Eco-walk

Rampal Andou

Our Tenants

No	Company	List of Business	No	Company	List of Business
1	PT. Aply Metal Indonesia	Scrap Recycle	27	PT. PTEC Research & Development	Biomass
2	PT. Agri Energi Nusantara	CPO manufactur	28	PT. Petro Papua Energy	Oil and Natural Gas Mining Services
3	PT. Ali Solar Cell	Solar Panel	29	PT. Proclad Asia International	Oil & Gas Pipe
4	PT. Austin Engineering Indonesia	Body Truck Building	30	PT. Pelayaran Citranstirta Tatasarana	Shipping Agency
5	PT. Bredero shaw Indonesia	Oil&Gas Pipe Coating	31	PT. Sarana Citranusa Kabil	Public Port
6	PT. Citra Graha Pertiwi (Citra Aerolink)	Property	32	PT. SMOE Indonesia	Heavy Industry for Rig and Fabrication Construction
7	PT. Citra Pembina Logistik	Roro Cargo Container	33	PT. Sumber Alfaria Trijaya Tbk	Retail Distribution of Consumer Products
8	PT. Citra Pembina Pengangkutan Industries	Cargo Handling	34	PT. Suryasarana Hidupjaya	Storage of Offshore Equipment & Materials and Assembly Plant for Equipment & Materials
9	PT. Citramadya Cargindo	Cargodoring & Stevedoring	35	PT. Toyo Kanetsu Indonesia	Oil & Gas Mining Service
10	PT. Citra Tubindo Engineering	Rig Refurbishment	36	PT. Yokohama Industrial Products Manufacturing Indonesia	Manufacturing of Rubber Fender, Rubber Hose for Oil & Gas Industry
11	PT. Citra Tubindo Tbk	Oil&Gas Pipe	LOGISTIC BASE:		
12	PT. Dwi Sumber Arca Waja	Oil & Gas Pipe	1	Premier Oil	Oil and Gas Exploration & Production Company
13	PT. Enerco RPO Internasional	TDAE Plant	2	Medco E&P Indonesia	
14	PT. Hydril Indonesia (Tenaris)	Oil & Gas Pipe	3	Conoco Philips	
15	PT. Haskon Citra Perdana	Consultant&Project Management	4	Inpex Masella	
16	PT. IEG Oilfield Indonesia	Fabrication and Welding Services for Oil and Gas	5	PT. Alam Bersemi Sentosa	Rig
17	PT. Ilthabi Mandiri Teknik	Refrigeration & Electrical Switchboard Fabrication	6	PT. Fagioli Lifting and Transportation Indonesia	Logistic Moving
18	PT. Indo Matra Power	Power Supply	BANKING:		
19	PT. Karya Sukses Permata	Electronics Manufacturing	1	PT. Bank BNI 46, Tbk	Banking
20	PT. Keprindo Plastic Packaging	Manufacturing of Polyfoam Plastic	2	PT. Bank Mandiri, Tbk	Banking
21	PT. KPE Industries	Heat Exchangers & Vessel	OTHERS:		
22	PT. KSD Indonesia	Machinery Import & Rental Service and Oil&Gas Equipment	1	PT. Binajasa Abadikarya (BPJS/Rusunawa)	Dormitory Management
23	PT. Nation Fittings Indonesia	Brass Rod	2	RS. Soedarsono Darmosoewito	Hospital
24	PT. National Industrial Gases Indonesia	Gas Industries	3	PT. Trias Jaya Propertindo	Business Centre Development & Management
25	PT. NOV	Oil & Gas Pipe	4	PT. Telekomunikasi Indonesia, Tbk	Telecommunication
26	PT. Panggon Waja Utama	Electrical Workshop	5	PT. Wahana Tirta Milenia	Drinking Water Package

OUR TENANTS

SMOE



Bredero Shaw



Austin Engineering



Yokohama



Citra Tubindo



DSAW



Conoco Phillips



CPPI Logistics Group



CTE





P.T. Citra Tubindo Tbk was established in 1983 to provide heat treatment and end finishing of OCTG (oil country tubular goods) for the oil and gas industry in Indonesia and the world. The plant started production in June 1984 as a pioneering enterprise on the island of Batam, situated just 20km south of Singapore and has now become the logistics centre for the oil service industry in all of Indonesia. Both Citra Tubindo's strategic location, coupled with having a deep water port located in the industrial estate, allows for the efficient global export of its products.



Today, P.T. Citra Tubindo is a world class manufacturer and service provider for oilfield tubular goods. Over 70% of its products are shipped to major multinational oil companies as well as state oil companies located around the world. It specialises in high performance proprietary pipe and premium thread connections for use in ever demanding well environments.



PT. DWI SUMBER ARCA WAJA was established in 1995 to manufacture large diameter steel pipes and structural tubulars. Customer requirements, industry standards and established procedures form the basis for our Quality Assurance program, which is certified by ISO 9001 & licensed to manufacture API 2B & 5L.

DSAW - NORTH SEA PROJECT

**Supply & construction of Jack Up Barge
Legs for self elevating drilling platform**

Length = 76 – 90 m

Diameter = 3 – 3.5 m

Wall Thickness = 45 – 65 mm

Material = EQ 70

Weight = 300 – 450 Mton each





PT. CITRA TUBINDO ENGINEERING objective is to provide our clients a top quality service & product, on time & within budget, by experience service technicians/engineers who have spent almost all their working life covering the oilfield fabrication, drilling & service industry.



PT Citra Tubindo Engineering was formed in 2007. Our key areas are Fabrication Works for the Oil & Gas industry, including Petrol & Chemical industries where off-site modular fabrication works are required. Our other complimentary area of works are for the Conversion/Modification & Refurbishment of small to medium size land and offshore rigs, targeted to the oil & gas industries.

CITRA TUBINDO ENGINEERING

Nabors & Murphy JV – Azurite
FDPSO Drill Floor + 10 Supporting
modules, 9x750bbl Mud Tanks, Process
Piping and Client's Equipment
Installation (2200 Mton)



GORGON PROJECTS,
AUSTRALIA

10 units dolphin and walkway
structures for Barrow Island,
Australia



CITRA TUBINDO ENGINEERING

2 units 1,500 HP Land Rig For Mobil Cepu Ltd

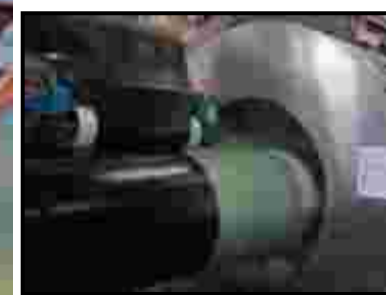
The 1st 2 unit 1500 HP onshore rig built locally in Batam for drilling in Cepu, Indonesia by Exxon Mobil.

The 3rd rig for Pertamina Drilling Services Indonesia is completed in Oct 2014.



BREDERO SHAW INDONESIA

<http://www.brederoshaw.com>



Bredero Shaw is the global leader in pipe coating solutions. With more than 80 years of experience, the largest team of dedicated pipe coating professionals, the most extensive network of strategically located plants worldwide and with proven innovative coating technologies, the company has protected more pipelines in virtually every environment and operating condition than anyone in the industry.

Inpex and Chevron Wheatstone

BREDERO SHAW INDONESIA

<http://www.brederoshaw.com>

Inpex GEP, 72,000 x 42" pipes (50% Kabil and 50% Kuantan)

- Coated pipe weights from 16 tonne to 22 tonne.

Chevron Wheatstone, 19,000 x 44" pipes (66% Kabil and 34% Kuantan)

- Coated pipe weights from 16 tonne to 25 tonne.



PT SMOE AT A GLANCE

90% owned

Subsidiary of SMOE Pte Ltd
Singapore

2003

Year Established

**Up to 8,000
workforce**

Can be mobilized

US\$120 million

Total Investment Realized To
Date

US\$80 million

Further Enhancement of Yard





At SMOE, offshore platforms and FPSOs are our business. As an industry leader, we serve worldwide oil and gas clients by providing services in engineering, procurement, construction, transportation, installation and commissioning. Each and every project undertaken is executed to the SMOE commitment of Safety, Quality and Timely Delivery.



- **PT Austin Engineering Indonesia specializes in the manufacture of mining attachment products**
- **i.e Dump truck bodies, Excavator buckets, tyre handlers, water tankers etc**





- Major customers are Indonesian Mining Contractors and Owner Miners
- Products are shipped to Kalimantan and other Indonesian mining regions
- Opportunity to export products to Australia, Africa, Mongolian and other major mining countries



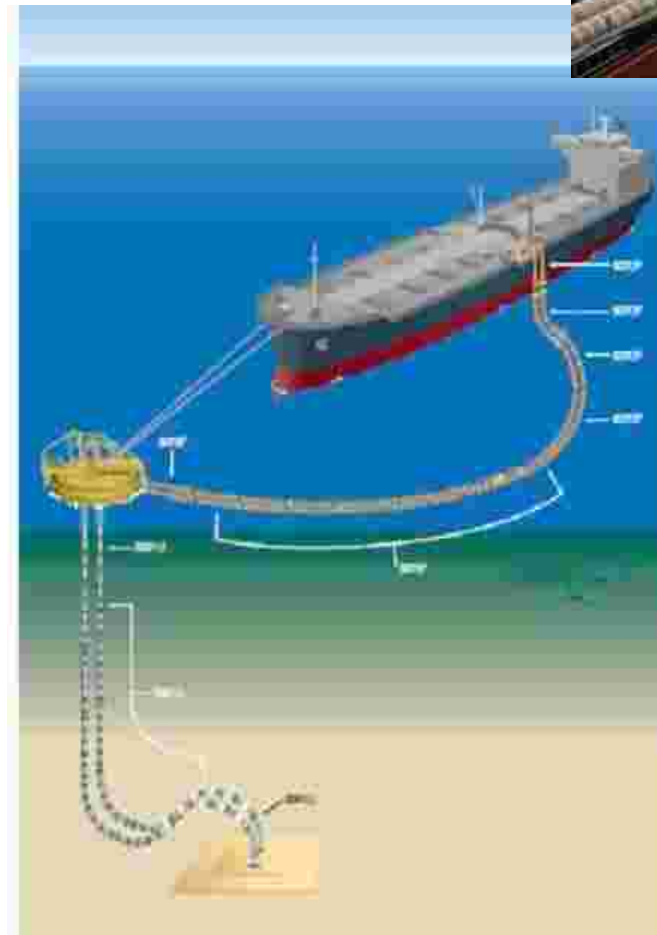
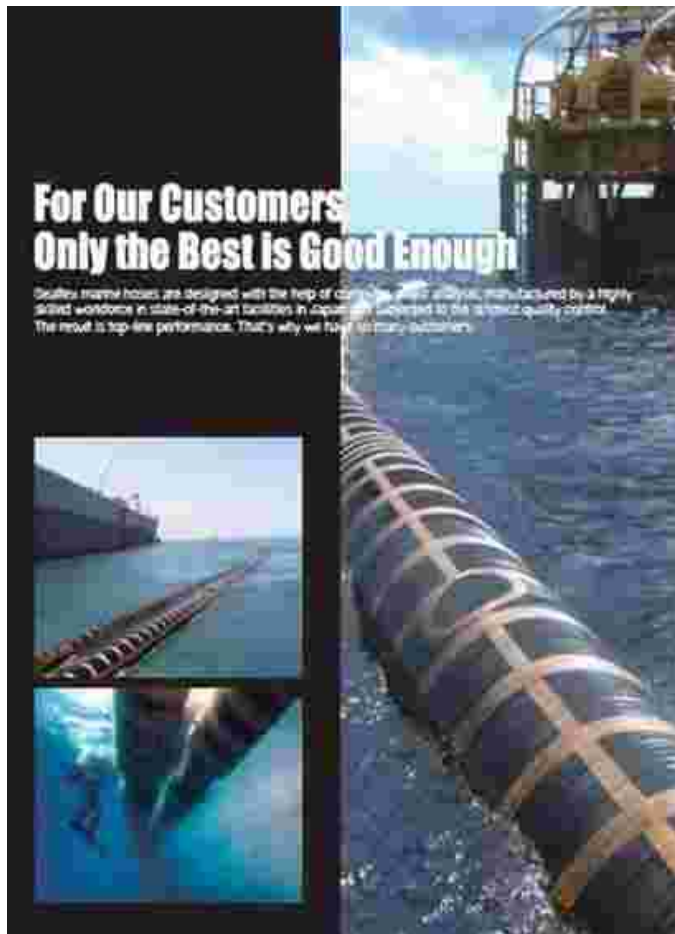
Company Name	PT. Yokohama Industrial Products Manufacturing Indonesia (ヨコハマ工業品製造インドネシア株式会社)		
Established	April 2014	Start Prod	2015 second term
Plant construction site	Riau Islands Province Batam City Kabil industrial - Republic of Indonesia		
Main Production	Marine hose, pneumatic fenders		
Total investment	38 million USD (first term)	Investment	12.5 MillionUSD
Land area	5.1万㎡		



6月19日、バタム島で開催された破土入れ式の模様



- Special large-diameter high-pressure rubber hose that is used when transferring oil across the tanker to storage facilities on the sea.



Pneumatic Fender



- The buffer material that is used to prevent damage to the hull and the quay when ships lie at anchor.





Enerco's TDAE (Treated Distillate Aromatic Extract) will be the 1st one in Indonesia and biggest one in Asia.

Total production capacity of 100,000 tons/year and could be increased.

Producing Rubber Process Oil (RPO) type TDAE for tyre industry to produce high performance tyre and improve of safety factor with a better wet grip and increase the rolling resistance at the optimal level to reduce the fuel cost.

More eco-friendly compared to other type of RPO currently used in tyre industries as this product is a non-carcinogenic substance.

Supply of raw material will be from Exxon Mobile Singapore.

Marketing agreement with Sumitomo Corp Asia and Oceania Pte Ltd to distribute the TDAE to overseas, inclusive Asia Countries.



Liquid Jetty for Loading & Unloading Enerco Material

PT. HASKON CITRA PERDANA

Project Management & Consultant

PT Haskon is able to undertake on behalf of their Clients a full Service from Inception through to Completion of the Project.

By being involved at the early stages of a Project PT Haskon can set up from the start parameters that will ensure that the Client Project is developed to it's optimum design, to a good standard and within budget and time frame.

PT Haskon Scope Of Service includes but is not limited to the following:

- Feasibility Stage
- Preparing Feasibility Studies that allow the Client to determine if the Project should proceed.
- This section of Service can also include the preparation of fully computerized 3D rendered and coloured perspectives which “Walk You Through” and clearly show what the Client’s future Project will look like after completion.
- This can be an invaluable tool when marketing the Project to the Clients potential target market.





PT. KABIL INDONUSA ESTATE



PT. KABIL CITRANUSA

Citranusa Niaga Commercial Centre - Block A2 No. 1
Jl. Hang Kesturi KM. 4, Kabil - Batam 29467 – Indonesia

Website : www.kcn.co.id
Email : marketing@kcn.co.id
Phone. : +62 778 711 099
Fax. : +62 778 711 114