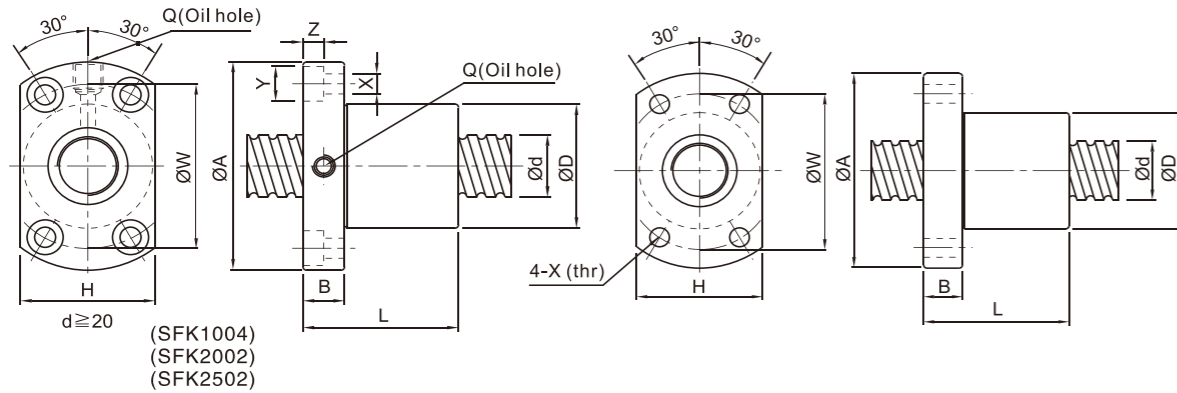




2-6 Size Table of SFK Ball Screws



I:Lead Da:Ball Diameter n:Number of Circuits K:Stiffness(Kgf/μm)

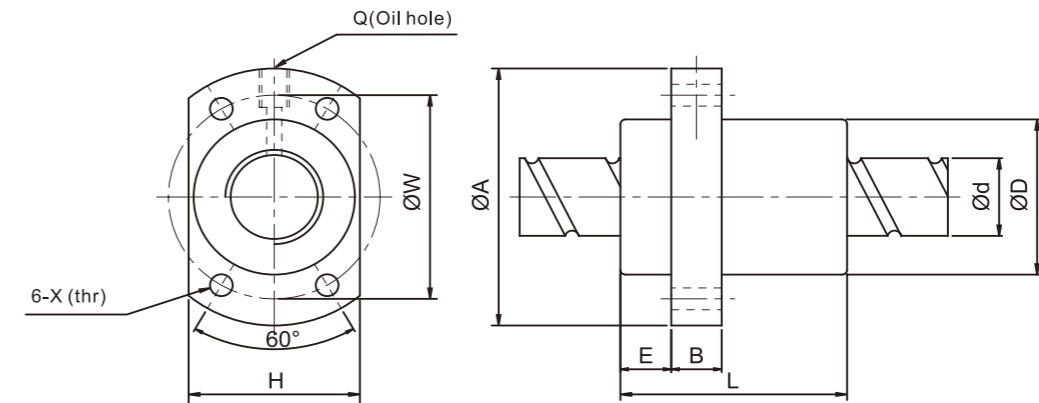
Ca:Basic Dynamic Rating Load(Kgf) Coa: Basic Static Rating Load(Kgf)

Unit:mm

Model no.	d	I	Da	Dimension											Load Rating Ca(kgf)	Load Rating Coa(kgf)
				D	A	B	L	W	H	X	Y	Z	Q	n		
SFK0401	4	1	0.8	10	20	3	12	15	14	2.9	-	-	-	1×2	64	97
SFK0601	6	1	0.8	12	24	3.5	15	18	16	3.4	-	-	-	1×3	111	224
SFK0801	8	1	0.8	14	27	4	16	21	18	3.4	-	-	-	1×4	161	403
SFK0802		2	1.2	14	27	4	16	21	18	3.4	-	-	-	1×3	222	458
SFK082.5		2.5	1.2	16	29	4	26	23	20	3.4	-	-	-	1×3	221	457
SFK1002	10	2	1.2	18	35	5	28	27	22	4.5	-	-	-	1×3	243	569
SFK1004		4	2	26	46	10	34	36	28	4.5	8	4.5	M6	1×3	468	905
SFK1204	12	2	1.2	20	37	5	28	29	24	4.5	-	-	-	1×4	334	906
SFK1205		4	2.5	24	40	6	28	32	25	3.5	-	-	-	1×3	454	722
SFK 1202		5	2.5	22	37	8	39	29	24	4.5	-	-	-	1×3	675	1316
SFK 1402	14	2	1.2	21	40	6	23	31	26	5.5	-	-	-	1×4	354	1053
SFK1602	16	2	1.2	25	43	10	40	35	29	5.5	-	-	M6	1×4	373	1200
SFK2002	20	2	1.2	50	80	15	55	65	68	6.5	10.5	6	M6	1×6	581	2284
SFK2502	25	2	1.2	50	80	13	43	65	68	6.5	10.5	6	M6	1×5	540	2381



2-7 Size Table of SFY Ball Screws



I:Lead Da:Ball Diameter n:Number of Circuits K:Stiffness(Kgf/μm)

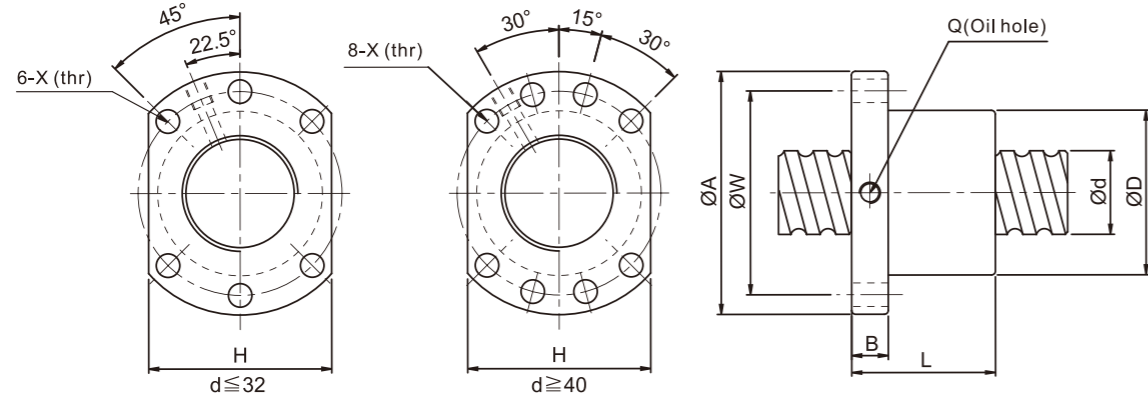
Ca:Basic Dynamic Rating Load(Kgf) Coa: Basic Static Rating Load(Kgf)

Unit:mm

Model no.	d	I	Da	Dimension											Load Rating Ca(kgf)	Load Rating Coa(kgf)
				D	A	E	B	L	W	H	X	Q	n			
SFY1616-3.6	16	16	2.778	32	53	10.1	10	45	42	34	4.5	M6x1	1.8×2	1073	2551	
SFY2020-3.6	20	20	3.175	39	62	13	10	52	50	41	5.5	M6x1	1.8×2	1387	3515	
SFY2040-1.6	20	20	3.175	39	62	13	10	48	50	41	5.5	M6x1	0.8×2	653	1597	
SFY2550-1.6	25	25	3.969	47	74	15	12	58	60	49	6.6	M6X1	0.8×2	976	2495	
SFY2525-3.6	25	25	3.969	47	74	15	12	64	60	49	6.6	M6x1	1.8×2	2074	5494	
SFY3232-3.6	32	32	4.762	58	92	17	12	78	74	60	9	M6x1	1.8×2	3021	8690	
SFY4040-3.6	40	40	6.35	73	114	19.5	15	99	93	75	11	M6x1	1.8×2	4831	14062	
SFY5050-3.6	50	50	7.938	90	135	21.5	20	117	112	92	14	M6x1	1.8×2	7220	21974	



2-8 Size Table of SFDC Ball Screws

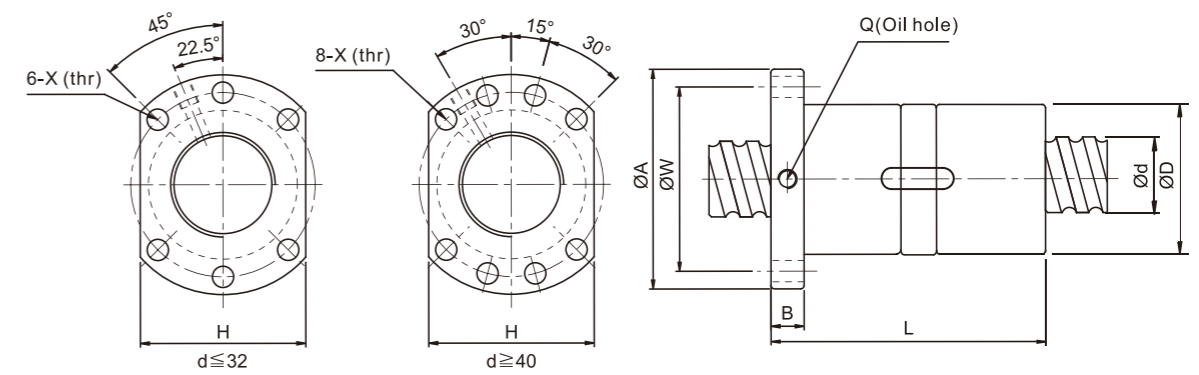


I:Lead Da:Ball Diameter n:Number of Circuits K:Stiffness(Kgf/μm)
Ca:Basic Dynamic Rating Load(Kgf) Coa: Basic Static Rating Load(Kgf) Unit:mm

Model no.	d	I	Da	Dimension									Load Rating Ca(kgf)	Load Rating Coa(kgf)	K kgf/μm
				D	A	B	L	W	X	H	Q	n			
SFDC2812-2.8	28	12	6.35	54	87	16	65.5	72	9	69	M8×1	2.8×1	2752	5746	43
SFDC2812-3.8		12	6.35	54	87	16	77.5	72	9	69	M8×1	3.8×1	3579	7799	59
SFDC2812-4.8		12	6.35	54	87	16	89.5	72	9	69	M8×1	4.8×1	4375	9851	74
SFDC2816-2.8		16	4.762	48	74	12	74.5	60	6.6	60	M6×1	2.8×1	1855	3589	41
SFDC2816-3.8		16	4.762	48	74	12	90.5	60	6.6	60	M6×1	3.8×1	2412	4871	55
SFDC2816-4.8		16	4.762	48	74	12	106.5	60	6.6	60	M6×1	4.8×1	2949	6153	70
SFDC3210-2.8	32	10	4.762	58	91	18	57	76	9	68	M8×1	2.8×1	1955	4041	45
SFDC3210-3.8		10	4.762	58	91	18	67	76	9	68	M8×1	3.8×1	2542	5485	61
SFDC3210-4.8		10	4.762	58	91	18	77	76	9	68	M8×1	4.8×1	3107	6928	77
SFDC3205-2.8		5	3.175	50	87	16	39	72	9	69	M8×1	2.8×1	1118	2653	43
SFDC3205-3.8		5	3.175	50	87	16	44	72	9	69	M8×1	3.8×1	1454	3600	58
SFDC3205-4.8		5	3.175	50	87	16	49	72	9	69	M8×1	4.8×1	1778	4547	73
SFDC3212-2.8	32	12	4.762	53	87	16	40.5	72	9	69	M8×1	2.8×1	1956	4049	45
SFDC3212-3.8		12	4.762	53	87	16	64.5	72	9	69	M8×1	3.8×1	2544	5496	61
SFDC3212-4.8		12	4.762	53	87	16	88.5	72	9	69	M8×1	4.8×1	3110	6942	77
SFDC3216-2.8		16	6.35	57	87	16	77.5	72	9	69	M8×1	2.8×1	2915	11226	48
SFDC3216-3.8		16	6.35	57	87	16	93.5	72	9	69	M8×1	3.8×1	3790	8887	66
SFDC3216-4.8		16	6.35	57	87	16	109.5	72	9	69	M8×1	4.8×1	4634	6549	83
SFDC4006-2.8	40	6	3.969	58	91	18	45.5	76	9	68	M8×1	2.8×1	1671	4010	52
SFDC4006-3.8		6	3.969	58	91	18	51.5	76	9	68	M8×1	3.8×1	2172	5618	70
SFDC4006-4.8		6	3.969	58	91	18	57.5	76	9	68	M8×1	4.8×1	2656	7096	88
SFDC4010-2.8		10	6.35	65	95	18	62.5	80	9	72	M8×1	2.8×1	3192	9048	57
SFDC4010-3.8		10	6.35	65	95	18	72.5	80	9	72	M8×1	3.8×1	4150	10922	77
SFDC4010-4.8		10	6.35	65	95	18	82.5	80	9	72	M8×1	4.8×1	5074	13797	97
SFDC4012-2.8	40	12	6.35	65	95	18	65.5	80	9	72	M8×1	2.8×1	3194	8058	57
SFDC4012-3.8		12	6.35	65	95	18	77.5	80	9	72	M8×1	3.8×1	4153	10936	77
SFDC4012-4.8		12	6.35	65	95	18	89.5	80	9	72	M8×1	4.8×1	5077	13815	97
SFDC4016-2.8		16	6.35	65	95	18	76.5	80	9	72	M8×1	2.8×1	3198	8085	57
SFDC4016-3.8		16	6.35	65	95	18	92.5	80	9	72	M8×1	3.8×1	4159	10972	77
SFDC4016-4.8		16	6.35	65	95	18	108.5	80	9	72	M8×1	4.8×1	5084	13860	97
SFDC5010-2.8	50	10	6.35	75	118	18	62.5	100	11	92	M8×1	2.8×1	3509	9982	67
SFDC5010-3.8		10	6.35	75	118	18	72.5	100	11	92	M8×1	3.8×1	4563	13547	90
SFDC5010-4.8		10	6.35	75	118	18	82.5	100	11	92	M8×1	4.8×1	5578	17112	114



2-9 Size Table of DFDC Ball Screws

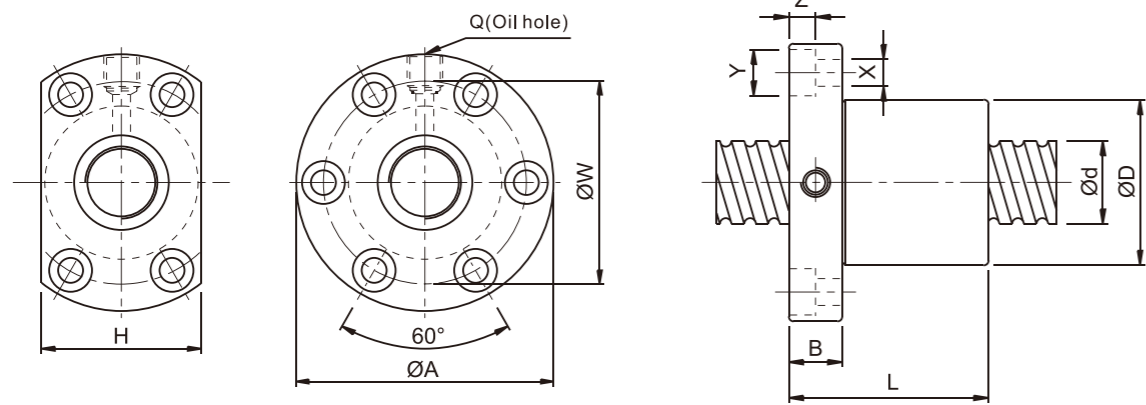


I:Lead Da:Ball Diameter n:Number of Circuits K:Stiffness(Kgf/μm)
Ca:Basic Dynamic Rating Load(Kgf) Coa: Basic Static Rating Load(Kgf) Unit:mm

Model no.	d	I	Da	Dimension									Load Rating Ca(kgf)	Load Rating Coa(kgf)	K kgf/μm
				D	A	B	L	W	H	X	Q	n			
DFDC2812-2.8	28	12	6.35	54	87	16	125.5	72	69	9	M8×1	2.8×1	2752	5746	66
DFDC2812-3.8		12	6.35	54	87	16	149.5	72	69	9	M8×1	3.8×1	3579	7799	90
DFDC2812-4.8		12	6.35	54	87	16	173.5	72	69	9	M8×1	4.8×1	4375	9851	113
DFDC2816-2.8		16	4.762	48	74	12	143	60	60	6.6	M6×1	2.8×1	1855	3589	63
DFDC2816-3.8		16	4.762	48	74	12	175	60	60	6.6	M6×1	3.8×1	2412	4871	85
DFDC2816-4.8		16	4.762	48	74	12	207	60	60	6.6	M6×1	4.8×1	2949	6153	108
DFDC3210-2.8	32	10	4.762	58	91	18	107.5	76	68	9	M8×1	2.8×1	1955	4041	69
DFDC3210-3.8		10	4.762	58	91	18	127.5	76	68	9	M8×1	3.8×1	2542	5485	94
DFDC3210-4.8		10	4.762	58	91	18	147.5	76	68	9	M8×1	4.8×1	3107	6928	119
DFDC3205-2.8		5	3.175	50	87	16	71.5	72	69	9	M8×1	2.8×1	1118	2653	52
DFDC3205-3.8		5	3.175	50	87	16	81.5	72	69	9	M8×1	3.8×1	1454	3600	71
DFDC3205-4.8		5	3.175	50	87	16	91.5	72	69	9	M8×1	4.8×1	1778	4547	90
DFDC3212-2.8	32	12	4.762	53	87	16	124.5	72	69	9	M8×1	2.8×1	1956	4049	69
DFDC3212-3.8		12	4.762	53	87	16	148.5	72	69	9	M8×1	3.8×1	2544	5496	94
DFDC3212-4.8		12	4.762	53	87	16	172.5	72	69	9	M8×1	4.8×1	3110	6942	119
DFDC3216-2.8		16	6.35	57	87	16	149.5	72	69	9	M8×1	2.8×1	2915	11226	74
DFDC3216-3.8		16	6.35	57	87	16	181.5	72	69	9	M8×1	3.8×1	3790	8887	100
DFDC3216-4.8		16	6.35	57	87	16	213.5	72	69	9	M8×1	4.8×1	4634	6549	126
DFDC4006-2.8	40	6	3.969	58	91	18	60.5	76	68	9	M8×1	2.8×1	1671	4010	80
DFDC4006-3.8		6	3.969	58	91	18	84.5	76	68	9	M8×1	3.8×1	2172	5618	108
DFDC4006-4.8		6	3.969	58	91	18	108.5	76	68	9	M8×1	4.8×1	2656	7096	136
DFDC4010-2.8		10	6.35	65	95	18	117.5	80	72	9	M8×1	2.8×1	3192	9048	87
DFDC4010-3.8		10	6.35	65	95	18	137.5	80	72	9	M8×1	3.8×1	4150	10922	118
DFDC4010-4.8		10	6.35	65	95	18	157.5	80	72	9	M8×1	4.8×1	5074	13797	149
DFDC4012-2.8	40	12	6.35	65	95	18	125.5	80	72	9	M8×1	2.8×1	3194	8058	87
DFDC4012-3.8		12	6.35	65	95	18	149.5	80	72	9	M8×1	3.8×1	4153	10936	118
DFDC4012-4.8		12	6.35	65	95	18	173.5	80	72	9	M8×1	4.8×1	5077	13815	149
DFDC4016-2.8		16	6.35	65	95	18	148.5	80	72	9	M8×1	2.8×1	3198	8085	87
DFDC4016-3.8		16	6.35	65	95	18	180.5	80	72	9	M8×1	3.8×1	4159	10972	118
DFDC4016-4.8		16	6.35	65	95	18	212.5	80	72	9	M8×1	4.8×1	5084	13860	149
DFDC5010-2.8	50	10	6.35	75	118	18	117.5	100	92	11	M8×1	2.8×1	3509	9982	104
DFDC5010-3.8		10	6.35	75	118	18	137.5	100	92	11	M8×1	3.8×1	4563	13547	141
DFDC5010-4.8		10	6.35	75	118	18	157.5	100	92	11	M8×1	4.8×1	5578	17112	178



2-10 Size Table of SFI Ball Screws



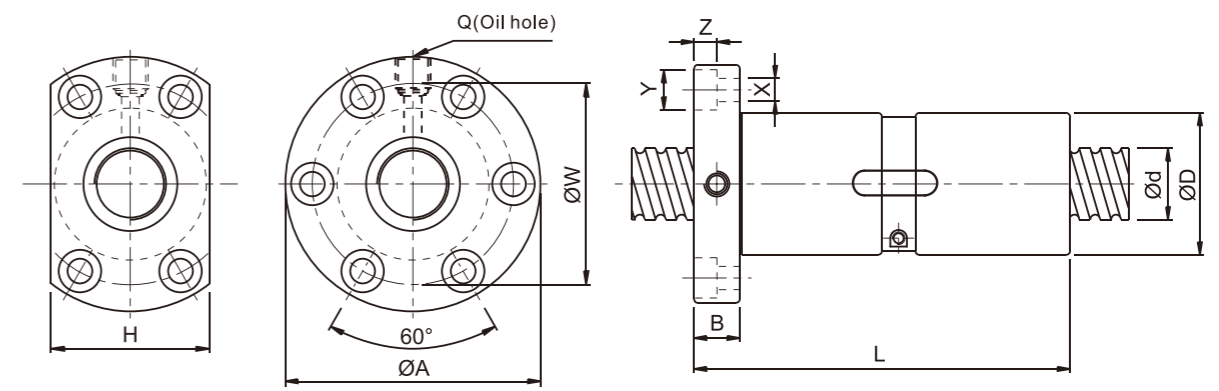
I:Lead Da:Ball Diameter n:Number of Circuits K:Stiffness(Kgf/μm)
 Ca:Basic Dynamic Rating Load(Kgf) Coa: Basic Static Rating Load(Kgf) Unit:mm

Model no.	d	I	Da	Dimension											Load Rating Ca(kgf)	Load Rating Coa(kgf)
				D	A	B	L	W	H	X	Y	Z	Q	n		
☆ SFI1605-4	16	5	3.175	30	49	10	50	39	34	4.5	8	4.5	M6×1	1×4	1127	2288
☆ SFI1610-3		10	3.175	34	58	10	57	45	34	5.5	9.5	5.5	M6×1	1×3	909	1848
☆ SFI2005-4	20	5	3.175	34	57	11	51	45	40	5.5	9.5	5.5	M6×1	1×4	1268	2991
☆ SFI2505-4	25	5	3.175	40	63	11	51	51	46	5.5	9.5	5.5	M8×1	1×4	1420	3872
☆ SFI2510-4		10	4.762	46	72	12	85	58	52	6.5	11	6.5	M8×1	1×4	2415	5543
☆ SFI3205-4	32	5	3.175	46	72	12	52	58	52	6.5	11	6.5	M8×1	1×4	1604	5103
☆ SFI3210-4		10	6.35	54	88	15	90	70	62	9	14	8.5	M8×1	1×4	3924	9152
☆ SFI4005-4	40	5	3.175	56	90	15	55	72	64	9	14	8.5	M8×1	1×4	1786	6512
☆ SFI4010-4		10	6.35	62	104	18	93	82	70	11	17.5	11	M8×1	1×4	4417	11669
☆ SFI5010-4	50	10	6.35	72	114	18	93	92	82	11	17.5	11	M8×1	1×4	4947	15488
☆ SFI6310-4	63	10	6.35	85	131	22	98	107	95	14	20	13	M8×1	1×4	5586	20417
☆ SFI8010-4	80	10	6.35	105	150	22	98	127	115	14	20	13	M8×1	1×4	6219	26049

Note:with sign ☆ can produce left helix



2-11 Size Table of DFI Ball Screws



I:Lead Da:Ball Diameter n:Number of Circuits K:Stiffness(Kgf/μm)
 Ca:Basic Dynamic Rating Load(Kgf) Coa: Basic Static Rating Load(Kgf) Unit:mm

Model no.	d	I	Da	Dimension											Load Rating Ca(kgf)	Load Rating Coa(kgf)
				D	A	B	L	W	H	X	Y	Z	Q	n		
☆ DFI1605-4	16	5	3.175	30	49	10	10	39	34	4.5	8	4.5	M6×1	1×4	1127	2288
☆ DFI2005-4	20	5	3.175	34	57	11	101	45	40	5.5	9.5	5.5	M6×1	1×4	1268	2991
☆ DFI2505-4	25	5	3.175	40	63	11	101	51	46	5.5	9.5	5.5	M6×1	1×4	1420	3872
☆ DFI2510-4		10	4.762	46	72	12	145	58	52	6.5	11	6.5	M6×1	1×4	2415	5543
☆ DFI3205-4	32	5	3.175	46	72	12	102	58	52	6.5	11	6.5	M8×1	1×4	1604	5103
☆ DFI3210-4		10	6.35	54	88	15	162	70	62	9	14	8.5	M8×1	1×4	3924	9152
☆ DFI4005-4	40	5	3.175	56	90	15	105	72	64	9	14	8.5	M8×1	1×4	1786	6512
☆ DFI4010-4		10	6.35	62	104	18	165	82	70	11	17.5	11	M8×1	1×4	4417	11669
☆ DFI5010-4	50	10	6.35	72	114	18	171	92	82	11	17.5	11	M8×1	1×4	4947	15488
☆ DFI6310-4	63	10	6.35	85	131	22	182	107	95	14	20	13	M8×1	1×4	5586	20417
☆ DFI8010-4	80	10	6.35	105	150	22	182	127	115	14	20	13	M8×1	1×4	6219	26049

Note:with sign ☆ can produce left helix