



Supply chain traceability for complex supply chains



Our Background

Founded in 2016, Circularise created a blockchain platform for sustainable supply chain management (SCM) with the purpose to improve the transparency and traceability across complex supply chains to facilitate a shift towards a circular economy.

Our solution produces a digital twin for materials used along a companies supply chain, the digital twin is then added to the blockchain ledger, which can be accessed by all agents in the supply chain. To maintain confidentiality, they have developed a proprietary 'Smart Questioning' technology.

Circularise has recently received a grant from Horizon 2020 for €1.5M, and currently has offices in The Hague in the Netherlands and in Tokyo, Japan.

Some of the company's trusted partners include: Covestro, Porsche, Domo and Marubeni.

Company Profile

HQ: The Hague, Netherlands

Established: 2016

Employees: ~20

Last Funding Type: Grant & Active Series A

Products: Commercialised

Patents: 1 patent pending

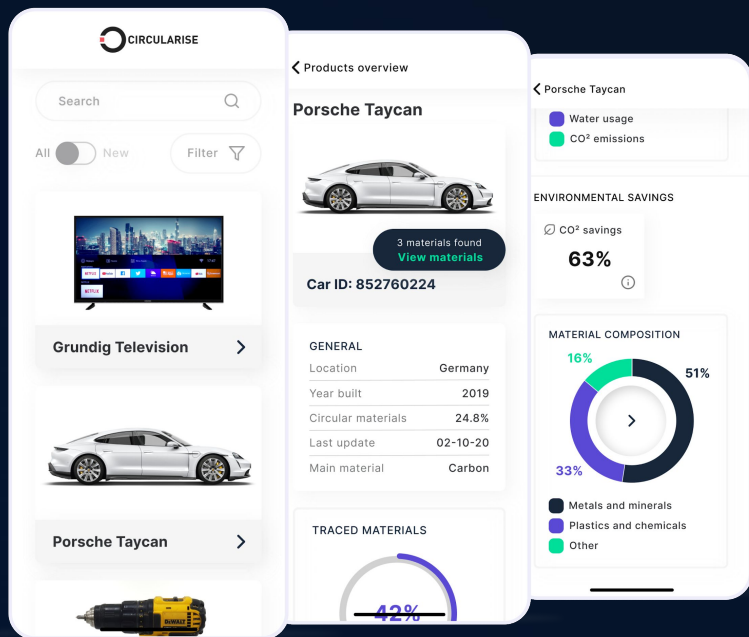


Product Overview

Circularise Solution

- A supply chain traceability & transparency platform built on a **public blockchain** ledger.
- Circularise creates a **digital twin** for each material / component within a companies supply chain; includes information e.g. about the materials environmental footprint and origin.
- **Patent-pending 'smart questioning'** technology protects the privacy of stakeholders in the supply chain and confidentiality of their data.

CIRCULARISE SOLUTIONS



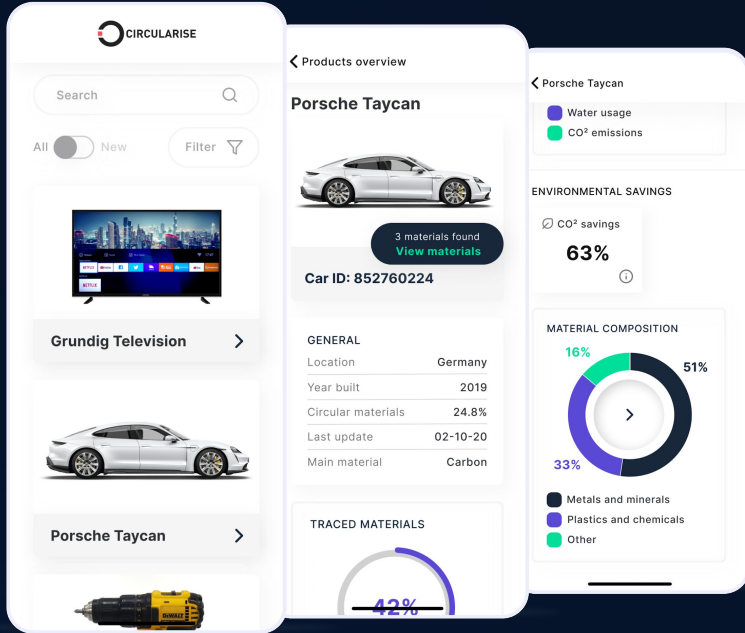
For Brands and OEMs

Gain visibility in every tier of your supply chain

Don't put your trust in self-reporting.

Access your Scope 3 emissions and other data coming directly from the suppliers to improve sustainability, compliance, and meet regulatory requirements and customer demand.

CIRCULARISE SOLUTIONS



For Suppliers and Manufacturers

Share data across supply chains without risking privacy and confidentiality.

Openly sharing data can put suppliers' businesses at risk.

Use Circularise to digitise your supply chain and share information with customers and regulators, without risking sensitive data.

Circularise partners

Customers

SUPPLIERS



STRATEGIC PARTNERS



FUNDED BY



CASE STUDY - Porsche Project



Challenge:

Porsche's objective is to offer and produce premium cars whilst reducing the environmental impact at each stage of its supply chain. This means reducing carbon emissions from its raw material suppliers all the way to the dismantling and recycling of the car.





Challenge:

Gemeente Amsterdam: has set targets to use 50% less new raw materials in Amsterdam by 2030 and has committed to becoming 100% Circular and climate-neutral by 2050.

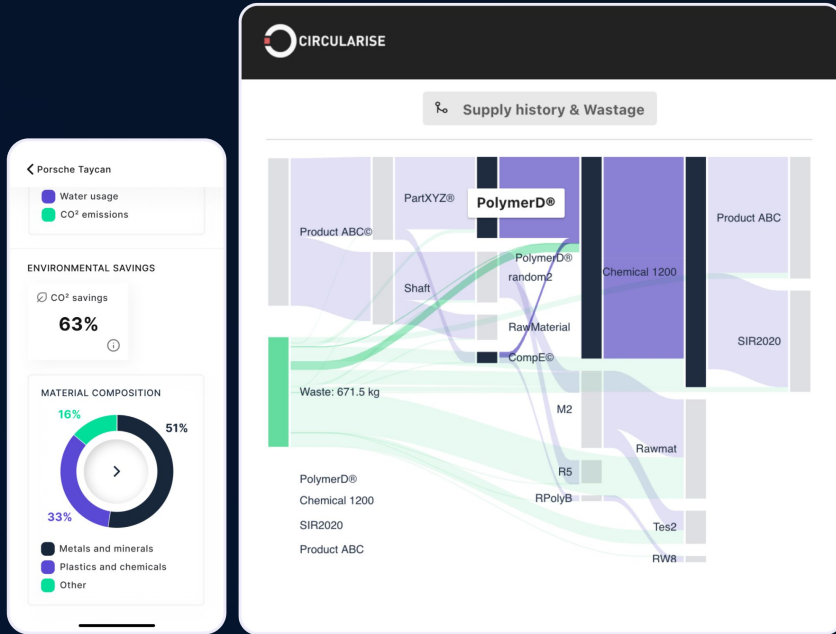
A key focus area is the built environment, representing more than 40% of waste flows related to construction.

Circularise supports the Circular Procurement for secondary or renewable materials via 2 projects:

- 1) Circular concrete
- 2) Recovery of municipal clothing.



Engage your stakeholders



1. **Showcase your sustainability efforts** to strengthen your brand
2. **Incentivise sustainable behaviour change** e.g. to support take-back systems
3. **Differentiate your sustainable products** to grow your revenue
4. **Share information** e.g. user or repair guides to support maintenance and product life time extension

Contact us to explore our solution



Dr. PHIL BROWN

VP BUSINESS DEVELOPMENT
& STRATEGY

Email

phil@circularise.com

LinkedIn

[https://www.linkedin.com/in/
phildbrown1/](https://www.linkedin.com/in/phildbrown1/)



Brian Smits

BUSINESS DEVELOPER

Email

brian@circularise.com

LinkedIn

[https://www.linkedin.com/in/
brian-smits-b5832227/](https://www.linkedin.com/in/brian-smits-b5832227/)



WWW.CIRCULARISE.COM
INFO@CIRCULARISE.COM
+31 (0)85 303 39 72

LINKEDIN
www.linkedin.com/company/circularise

TWITTER
[@circularise](https://twitter.com/circularise)