



Company Profile

公司简介 | Profil Perusahaan

目录

Table of Contents

华友简介

Introduction of Huayou 3

华友钴业概况
Overview of Huayou Cobalt 4

全球业务
Global Business 5

一体化产业链
Integrated Industrial Chain 6

行业地位
Rank in The Industry 6

全球客户
Global Customers 7

技术研发
Technology Research and Development 7

华友境外投资计划占股
Huayou Overseas Investment Plan Shareholding 8

华友印尼项目简介

Introduction of Huayou Projects in Indonesia 9

华友印尼项目概括
Overview of Huayou Projects in Indonesia 10

华越项目
Huayue Project 11

华科项目
Huake Project 12

华飞项目
Huafei Project 13

WBN矿冶一体项目
WBN Mining and Metallurgy Integrated Project 13

IWIP项目
IWIP Project 14

华山湿法项目
Huashan HPAL Project 15

波马拉湿法项目
Pomalaa HPAL Project 15

Sorowako项目
Sorowako Project 16

目录

Table of Contents

印尼波马拉工业园介绍

Introduction of Indonesia Pomalaa Industry Park (IPIP)	17
企业文化 Company Culture	18
理念与责任 Vision and Responsibilities	19
园区位置 Location	20
资源优势 Excellent Resources	21
园区建设规划项目 Planned Projects	21
园区初期规划建设设施 Initial Planned Facilities	21
初始入园企业 Initial Enterprises	22
园区特色 (锂电全产业链闭环工业园) Feature (Closed Loop of Whole Lithium Battery Industry Chain)	23
园区特色 (清洁能源) Feature (Green Energy)	23
园区投资计划规模、带动就业 Investment Plan Scale, Driving Employment	24
社会责任 CSR	24
招商 Investors	25



华友简介

Introduction of Huayou



华友简介

Introduction of Huayou

1 华友钴业概况 Overview of Huayou Cobalt



2015.01 上交所上市, 股票代码 603799

2015.01 Listed on the Shanghai Stock Exchange, stock code 603799

华友钴业成立于2002年, 集团总部位于中国浙江省桐乡市经济开发区。是全球领先的新能源锂电材料供应商和最大的钴产品供应商。

Huayou Cobalt was established in 2002 and headquartered in Economy Development Zone, Tongxiang City, Zhejiang Province, China. It is the world's leading supplier of new energy lithium battery materials and the largest supplier of cobalt products.

构建了镍钴锂资源、绿色精炼、锂电材料一体化产业链及废旧电池循环回收产业生态。跻身中国民企500强, 总资产超千亿、市值超千亿、员工2.56万人。

Huayou has constructed an integrated industrial chain of nickel-cobalt-lithium resources, green refining and lithium battery materials, and an industrial ecology of waste battery recycling. It has ranked among the top 500 private enterprises in China, with total assets of over 100 billion, a market value of over 100 billion and 25,600 employees.



刚果金铜钴冶炼项目

Copper cobalt smelting project in DRC



印尼湿法项目

HPAL project in Indonesia



桐乡总部
Tongxiang Headquarters



衢州制造基地
Quzhou Manufacturing Base

2 全球业务 Global Business



锂电材料一体化制造基地布局：
中国(衢州、广西、桐乡)

Layout of integrated manufacturing base of lithium battery materials:
China (Quzhou, Guangxi, Tongxiang)

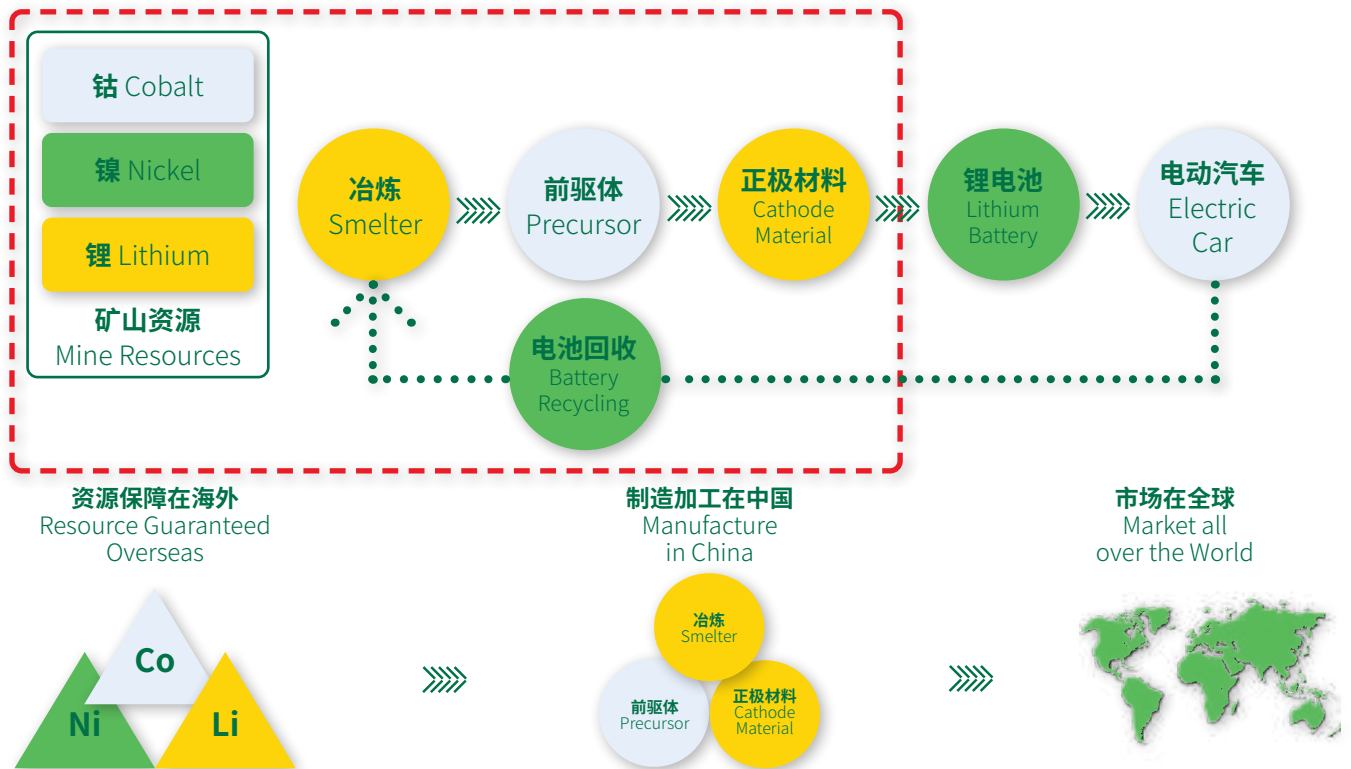
锂电金属资源开发区域布局：
刚果(金)、津巴布韦、印尼

Layout of lithium battery metal resource development region:
DRC (Kinshasa), Zimbabwe, Indonesia

锂电金属资源循环回收布局：
中国、欧洲、东南亚

Layout of lithium battery metal resource recycling:
China, Europe, Southeast Asia

3 一体化产业链 Integrated Industrial Chain



上图从矿山到电动汽车整个产业价值链中, 红圈内的价值链环节华友都具有产能且产能位居世界前列。

In the entire industrial value chain from mines to electric vehicles in the above picture, Huayou has been a player in the links circled by the red dotted line, with production capacity ranking among the top of the world.

4 行业地位 Rank in The Industry



全球第一
1st 钴新材料市场占比:
New cobalt materials market share.

全球第三
3rd 三元前驱体市场占比:
Ternary precursor market share.

全球第三
3rd 三元正极材料市场占比:
Ternary cathode materials market share.

全球领先
1st 镍、钴、锂供应链保障:
Nickel, cobalt, lithium, supply chain assurance.

5 全球客户 Global Customers

华友产品已全面进入了全球主流车企锂电材料的供应链。

Huayou products have fully entered the supply chain of lithium battery materials for global mainstream car companies.



6 技术研发 Technology Research and Development

坚持“以科技创新驱动产业发展”，创建了华友特色的科创体系及激励机制，助力华友可持续发展目标的达成。

Adhering to “driving industrial development with scientific and technological innovation”, Huayou has created a scientific and technological innovation system and incentive mechanism with Huayou characteristics to help Huayou achieve its sustainable development goals.



三元正极材料研发投入占营收超8%

Ternary cathode material R&D investment accounts for over 8% of revenue.



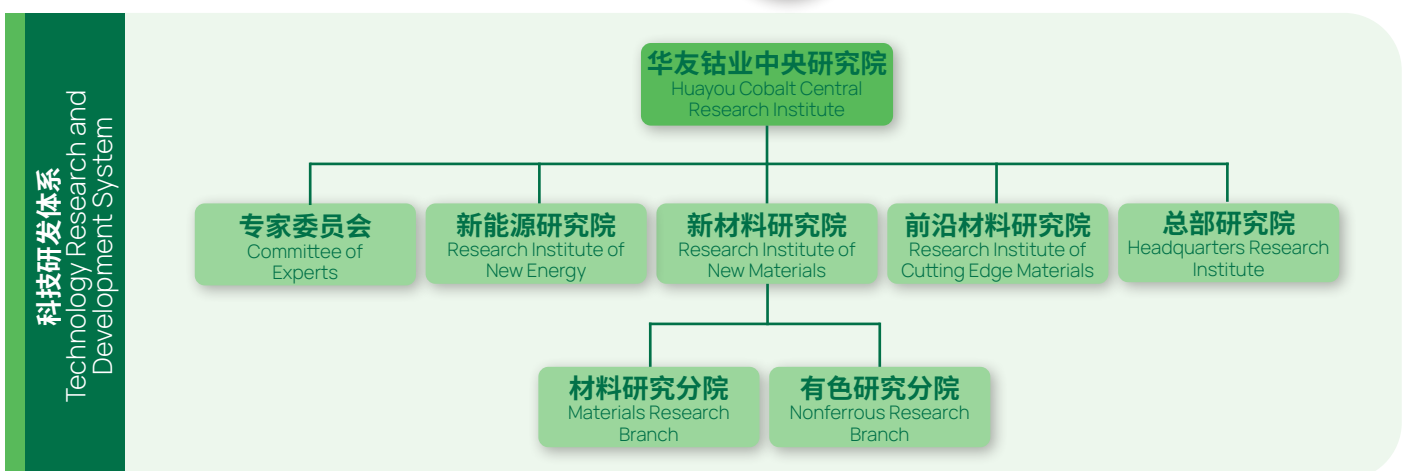
研发场地10万平方米

100.000 m² R&D site.



1700余人技术研发团队

Technical R&D teams with more than 1.700 personnel.



7 华友境外投资计划占股 Huayou Overseas Investment Plan Shareholding



印尼区 Indonesia

印尼已建成和在建项目 Completed and Ongoing Projects in Indonesia	持股比例 Shareholding Proportion	印尼计划中项目 Projects Planned in Indonesia
华越镍钴湿法项目 Huayue Nickel Cobalt HPAL Project	57%	华山湿法项目 Huashan HPAL Project
华科镍业高镍镉项目 Huake Nickel High Nickel Matte Project	70%	波马拉湿法项目 Pomalaa HPAL Project
华飞镍钴湿法项目 Huafei Nickel Cobalt HPAL Project	51%	Sorowako湿法 Sorowako HPAL
维达贝镍业WBN矿冶一体项目 Weda Bay Nickel Industry WBN Mining and Metallurgy Integrated Project	15.39%	
IWIP工业园项目 IWIP Industrial Park Project	24%	

其他国家 Overseas

项目名称 Name of Projects	持股比例 Shareholding Proportion
Manono 锂辉石矿/Manono Spodumene Mine 刚果金/DRC	7.8%
Manono 锂辉石尾矿/Manono Spodumene Tailings 刚果金/DRC	35%
Arcadia 锂矿项目/Arcadia Lithium Project 津巴布韦/Zimbabwe	100%



华友印尼项目简介

Introduction of Huayou Projects in
Indonesia

2

华友印尼项目简介

Introduction of Huayou Projects in Indonesia

1 华友印尼项目概括 Overview of Huayou Projects in Indonesia



D 华越湿法
Huayue HPAL

A 华山湿法
Huashan HPAL

IWIP园区
IWIP Industrial Park

A 华科火法 Huake RKEF 华飞湿法 Huafei HPAL

WBN矿冶一体项目
WBN integrated mining and metallurgy project

B 波马拉湿法
Pomalaa HPAL

C 索罗瓦科湿法
Sorowako HPAL

Note:

- 5个已建成和在建项目
5 completed and under-constructed projects
- 3个印尼计划中项目
3 planned projects in Indonesia

华友目前在印尼投资及参股项目共计8个，其中已建成和在建项目5个，主要集中在“大K岛Morowali工业园和小K岛维达贝工业园”。分别是华越湿法项目、WBN矿冶一体项目、IWIP工业园项目、华科火法项目、华飞湿法项目。

Huayou currently has a total of 8 investment and shareholding projects in Indonesia, including 5 completed and under construction projects, mainly concentrated in Indonesia Morowali Industry Park (IMIP) and Indonesia Weda Bay Industry Park (IWIP). The projects are Huayue HPAL project, WBN integrated mining and metallurgy project, IWIP Industrial Park project, Huake RKEF project, Huafei HPAL project.

计划投资项目：3个，华山湿法项目、波马拉湿法项目、Sorowako项目。

There are 3 projects in plan, including Huashan HPAL project, Pomalaa HPAL project, Sorowako project.

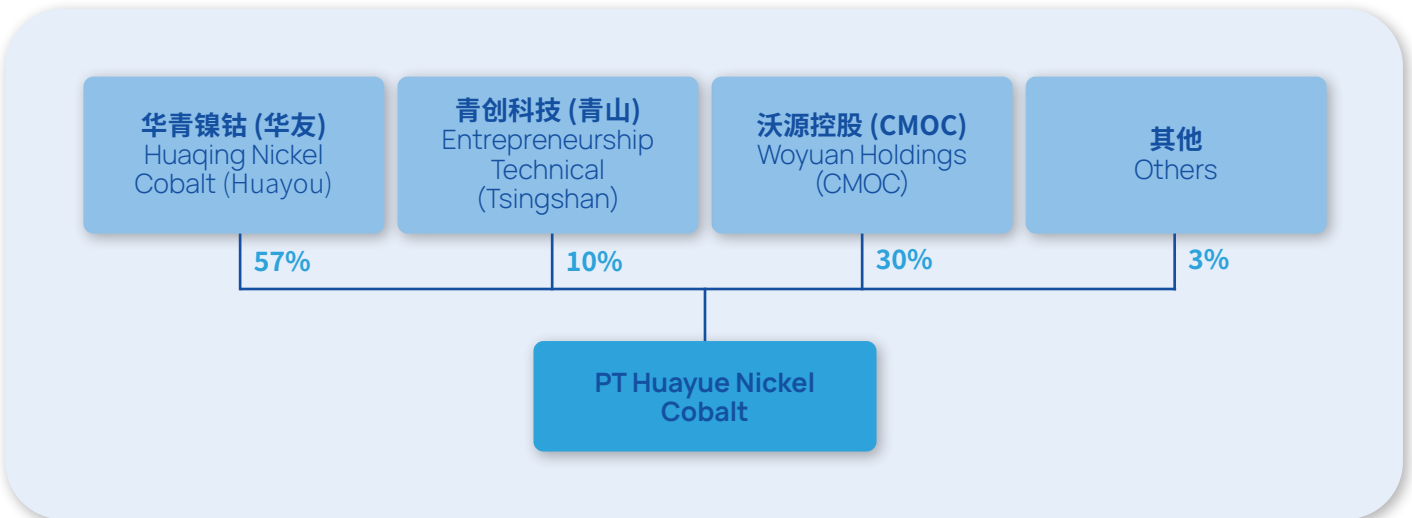
1 华越项目 Huayue Project

年产6万吨镍金属量 粗制氢氧化镍钴 湿法冶金项目。

Hydrometallurgy project of crude nickel cobalt hydroxide with an annual capacity of 60,000 tons of nickel metal.

在印度尼西亚Morowali工业园区, 与青山、CMOC等合作建设一个年产6万吨镍金属量的MHP湿法冶炼厂。

Huayue Project was constructed by Huayou in cooperation with partners including Tsingshan, CMOC, etc. It is located in IMIP with an annual capacity of 60,000 tons of nickel metal.



该项目已投产, 项目产品为粗制氢氧化镍钴 (MHP) 和副产品铬精矿。

年产粗制氢氧化镍钴产量16.3万吨/年(干基), 产品含镍6.1万, 含钴6000~7000吨, 铬精矿约21万吨/年(干基)。



The Project has been put into production, product for the project is crude nickel cobalt hydroxide (MHP) and by-product chromium concentrate.

The annual output of MHP is 163,000 t/a (dry basis), which contains 61,000 tons of nickel, 6,000~7,000 tons of cobalt, and the output of chromium concentrate is about 210,000 t/a (dry basis).

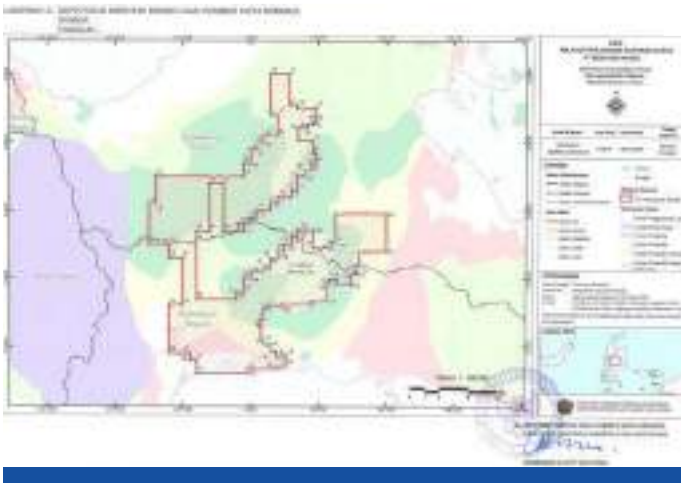
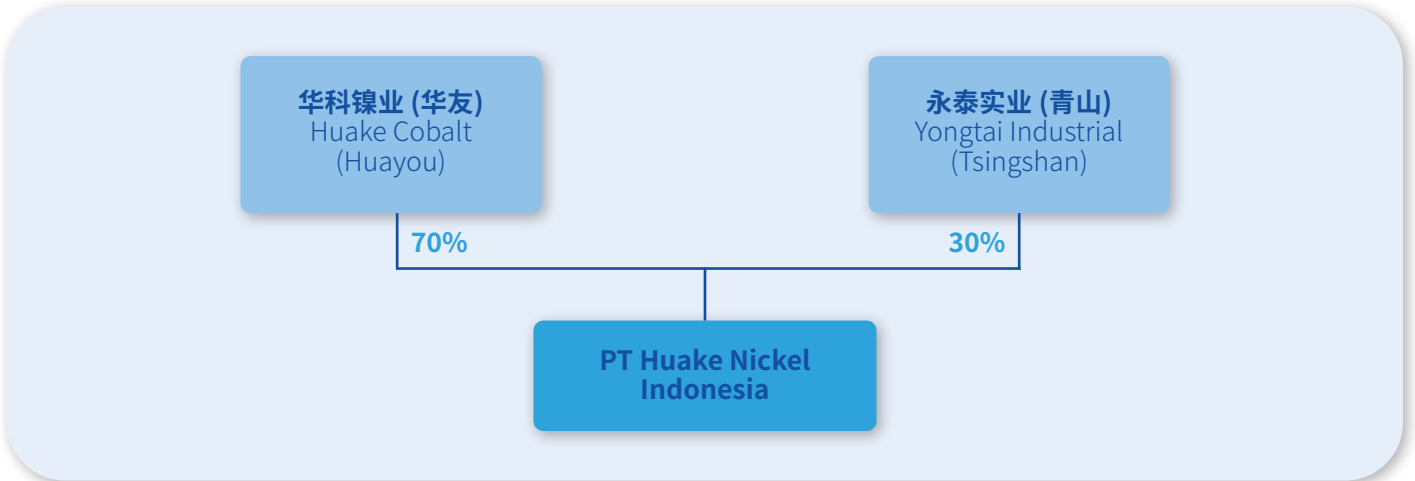
2 华科项目 Huake Project

年产4.5万吨/年镍金属量 高镍锍 火法冶炼项目。

Pyrometallurgy project of high nickel matte with an annual capacity of 45,000 tons of high nickel metal.

与青山控股集团合作, 在印尼维达贝工业园区建设一个年产4.5万吨镍金属量的高镍锍项目。

This is a project in cooperation with Tsingshan, which is located in IWIP, with an annual capacity of 45,000 tons of nickel contained in the product high nickel matte.



该项目年产45kt含镍高镍锍, 是生产电池级硫酸镍和硫酸钴的核心原料; 该项目的矿石年处理量约为300万吨/年, 项目已依计划投产。

The project has an annual capacity of 45kt of nickel contained in the product high nickel matte, which is the core raw material for the production of battery-grade nickel sulfate and cobalt sulfate. The annual ore processing capacity of the project is about 3 million tons per year and the project has been put into production as planned.

矿石主要来自华友钴业公司拥有15.39%所有权的WBN业务, 以及与其他来源的长期矿石供应协议。

The consumed ores of this project are majorly supplied by WBN in which Huayou holds 15,39% shares, as well as other mine sources under long-term ore supply agreements.

3 华飞项目 Huafei Project

年产12万吨镍金属量 粗制氢氧化镍钴 湿法冶金项目。

Hydrometallurgy project of crude cobalt hydroxide with an annual capacity of 120,000 tons of nickel metal.

印尼维达贝工业园区,与亿纬锂能等合作方共同合作建设一个年产12万吨镍金属量,1.5万吨钴金属量的MHP湿法冶炼厂,华友持股51%。

This is a hydrometallurgy project located in IWIP, in cooperation with partners including EVE Battery, having an annual capacity of 120,000 tons of nickel and 15,000 tons of cobalt contained in the product MHP, in which Huayou holds 51% shares.



项目预计2023年底完工,项目产品为粗制氢氧化镍钴(MHP)和副产品铬精矿。项目建成投产后,预计第一年(2023年)达到设计能力的50%,第二年(2024年)达到设计能力的100%。

The project is expected to be completed by the end of 2023. The project products are crude nickel cobalt hydroxide (MHP) and by-product chromium concentrate, after the project is completed and put into operation, it's expected to reach 50% of the designed capacity in the first operation year (2023) and 100% in the second year (2024).

4 WBN矿冶一体项目 WBN Mining and Metallurgy Integrated Project



该项目位于印度尼西亚北马鲁古省哈尔马赫拉区Weda县,WBN资源:镍~934万吨,钴~40万吨。该矿由华友和法国Eramet公司开发和运营。

This project is located in Weda Bay, Halmahera District, North Maluku Province, Indonesia. WBN resources: ~9.34 million tons of nickel, ~400,000 tons of cobalt. The mine is developed and operated by Huayou and Eramet of France.

WBN项目包括WedaBay的矿山和一个镍铁冶炼厂，每年生产3.2万吨镍金属镍铁，有四条RKEF生产线，华友持股15.39%。

The WBN project includes the mine in Weda Bay and a ferronickel smelter, which produces 32,000 tons of nickel metal contained in the product ferronickel per year and has four RKEF production lines. Huayou holds 15.39% of the shares.



WedaBay矿山：2019年5月，公司成功取得项目相关资质，WBN矿于2019年10月开始开采，采矿计划定为每年1200万吨矿石，其中不包括用于湿法冶金的褐铁矿，那么矿山的寿命将超过40年。

Weda Bay Mine: In May 2019, the company succeeded to obtain all relevant certificates and started to mine in October the same year. The mine is designed to produce 12 million tons of ore per year, excluding limonite ore used to HPAL, with a mine life more than 40 years.

WedaBay镍铁厂：WBN镍铁冶炼厂于2018年8月开工建设，WBN冶炼厂于2020年3月提前竣工，镍铁于2020年4月底顺利投产。目前，该冶炼厂已达设计产能。

Weda Bay Ferronickel Plant: The WBN Ferronickel Smelter started construction in August 2018. It was completed ahead of the schedule in March 2020 and put into production at the end of April 2020. Now the smelter has reached the designed capacity.

5 IWIP 项目 IWIP Project



● 公司名称：印度尼西亚维达贝工业园有限公司

Company name: Indonesia Weda Bay Industrial Park Co., Ltd.

● 项目名称：PT Indonesia Weda Bay Industrial Park

Project Name: PT Indonesia Weda Bay Industrial Park

● 建设范围：建设物流系统、机场、酒店、宿舍及配套系统，为入驻企业提供基础服务

Construction scope: construct logistics system, airport, hotel, dormitory and supporting system and provide basic services for settled enterprises

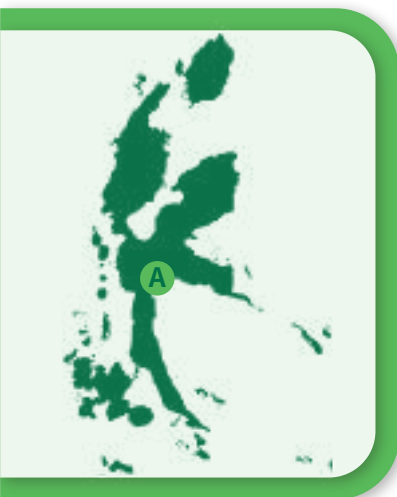
● 项目面积：3,445公顷

Project area: 3,445 HA

1 华山湿法项目 Huashan HPAL Project

该项目位于印度尼西亚马鲁古群岛中的哈马黑拉岛，马鲁古省北马鲁古县。华友钴业拟通过全资子公司华拓国际与 Glaucons 合资建设华山镍钴年产12万吨镍金属量氢氧化镍钴湿法项目。

This project is located in North Maluku County, Maluku Province, Halmahera Island, Maluku Island, Indonesia. Huayou intends to build Huashan HPAL project through its wholly-owned subsidiary Huatuo International jointly with Glaucons, which has a designed capacity of 120,000 tons of nickel contained in the product MHP.



A 北马鲁古岛 North Maluku Island

- 华友钴业全资子公司华拓国际持股68%，Glaucons持股32%。
Huatuo International, a wholly-owned subsidiary of Huayou Cobalt, holds 68% of the shares and Glaucons holds 32% of the shares.
- 设计年产能：项目产出氢氧化镍钴中间产品32.6万吨/年，折合镍金属量12.3万吨/年，钴金属量1.57万吨/年；另有副产品铬精矿约50.6万吨/年。项目年处理矿石能力约为1040万吨/年。
Designed capacity: This project produces MHP product 326,000 t/a, which is equivalent to nickel metal 123,000 t/a, cobalt metal 15,700 t/a; it also produces 506,000 tons of chromium concentrate per year as by-product. The annual ore processing capacity of this project is about 10.4 mt/a.
- 该项目处于设计阶段，项目建设周期为三年。
The project is in the design stage and the project construction period is three years.

2 波马拉湿法项目 Pomalaa HPAL Project

Pomalaa湿法冶炼项目位于印尼苏拉威西岛东南苏拉威西省科拉卡县波马拉(Pomalaa)镇，以PT Vale持有的Pomalaa矿山为矿源，采用HPAL高压酸浸技术生产粗制氢氧化镍钴(MHP)。

Pomalaa hydrometallurgy project is located in Pomalaa Town, Kolaka County, Southeast Sulawesi Province, Indonesia, with the Pomalaa Mine held by PT Vale as the source, adopting HPAL technology to produce crude nickel and cobalt hydroxide (MHP).



B 波马拉湿法项目 Pomalaa HPAL Project

- 设计年产能：镍金属量12万吨，钴金属量1.5万吨。
Designed capacity: Nickel metal 120,000 t/a, cobalt metal 15,000 t/a.
- 项目包括高压酸浸厂、选厂、道路、码头等设施。
This project includes HPAL plant, Feed Preparation Plant (FPP), road, port and other facilities.
- 项目计划2025年底建成并投产。
The project is planned to be completed and put into operation by the end of 2025.

Sorowako项目 Sorowako Project

Sorowako湿法冶炼项目位于印尼苏拉威西岛南苏拉威西省东鲁武县, 以PT Vale持有的Sorowako矿山为矿源, 采用HPAL高压酸浸技术生产粗制氢氧化镍钴 (MHP)。

Sorowako hydrometallurgy project is located in East Luwu County, South Sulawesi Province, Sulawesi Island, Indonesia, using HPAL technology to produce crude nickel and cobalt hydroxide (MHP).

C Sorowako项目 Sorowako Project

- **设计年产能: 镍金属量6万吨, 钴金属量6千** Designed capacity: nickel metal 60.000 t/a, cobalt metal 6.000 t/a.
- **项目包括高压酸浸厂、选厂、道路、码头等设施。** This project includes HPAL plant, Feed Preparation Plant (FPP), road, port and other facilities.



An aerial photograph showing a wide, muddy brown river flowing through a lush green landscape. The river is flanked by dense tropical vegetation and palm trees. In the background, there are rolling hills and a clear blue sky with light clouds. A paved road with several cars is visible on the right side of the river.

印尼波马拉工业园介绍

Introduction of Indonesia Pomalaa Industry Park (IPIP)

3

印尼波马拉工业园介绍 Introduction of Indonesia Pomalaa Industry Park (IPIP)

1 企业文化 Company Culture

愿景
Vision

引领世界绿色发展。

To lead the world's green development.

使命
Mission

让园区所在地政府和人民欢心, 让入园企业放心、省心、舒心。

To make the local government and people in the industrial area feel glad, and to make enterprises in the industrial park feel at ease, worry-free and comfortable.

价值观
Values

尊重 信念 激情 平衡 创新 奉献。

Respect, Belief, Passion, Balance, Innovation, Dedication.

战略
Strategy

通过开发绿电, 建设完善的基础设施, 提供在印尼投资一站式解决方案, 以资源、冶炼为依托, 招商引资, 实现成为世界一流的绿色锂电全产业链闭合工业园区。

By developing green power, building complete infrastructure, providing one-stop solution for investment in Indonesia, and attracting investment based on resources and smelting, to build a world-class lithium whole industry chain closed green industrial park.

2 理念与责任 Vision and Responsibilities

华友将以公司出色的建设能力和实干精神为基础,推动当地区域建设及经济的快速发展。

Based on the company's excellent construction capabilities and practical spirit, Huayou will promote the rapid development of local regional construction and economy.

一个理念 | One Concept

不管在哪里投资,都要为当地经济社会做贡献!

No matter where you invest, you must contribute to the local economy and society!

四个责任 | Four Responsibilities

1. 以打造锂电全产业链闭环工业园,完善锂电产业链,提高社会生产总值为责任。

It is the responsibility to create a closed industrial park for the whole lithium battery industry chain, improve the lithium battery industry chain and increase the social gross production value.

2. 打造清洁能源电力,以降低碳排放,提高区域清洁电力占比,助力实现碳中和、碳达峰承诺为责任。

Create clean energy power, with the responsibility to reduce carbon emissions, increase the proportion of clean power in the region and help achieve carbon neutrality and carbon peak commitments.

3. 以带动人民的就业、提高居民生活水平、发展区域经济为责任。

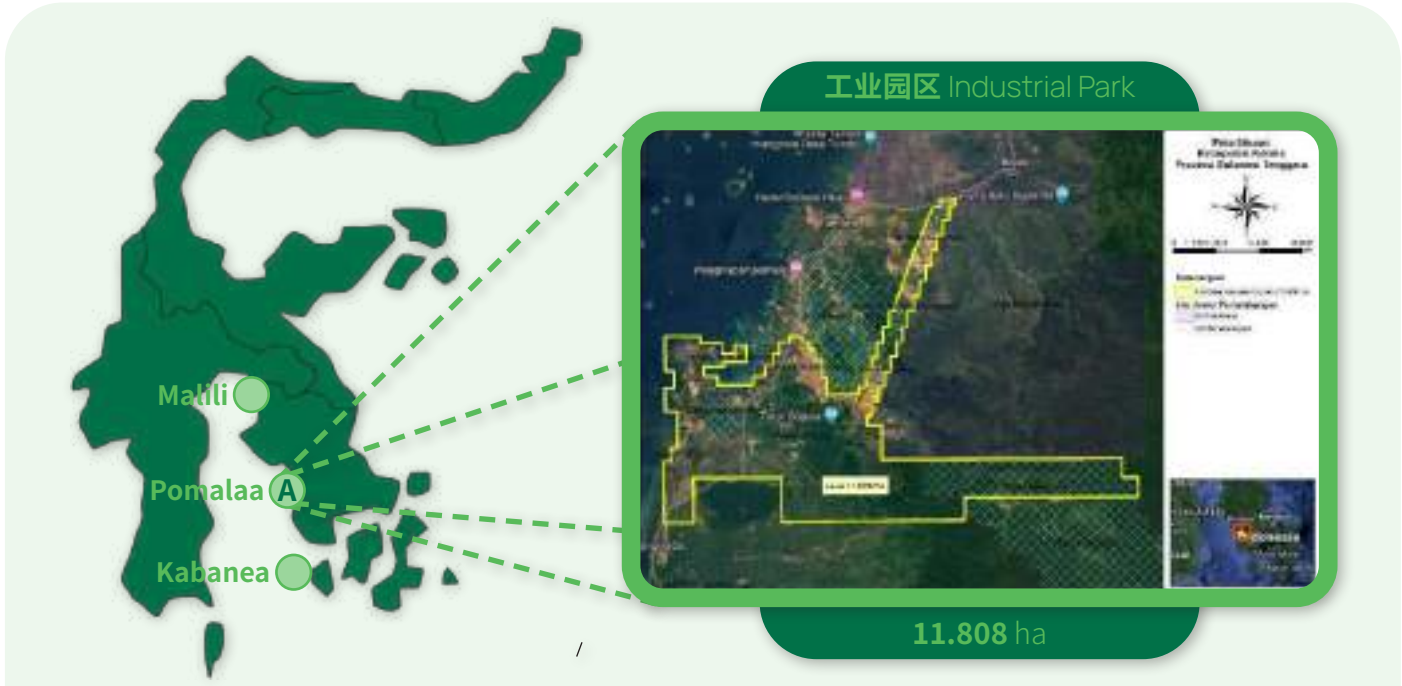
It is the responsibility to promote the employment of the people, improve the living standards of residents and develop the regional economy.

4. 华友在园区建设和经营过程中将十分重视CSR,以全力推动、带动社区发展,改善当地社区生活环境为目标。

Huayou will attach great importance to CSR during the construction and operation of the park, with the goal of fully promoting and driving community development and improving the living environment of the local community.

3 园区位置 Location

波马拉工业园位于印度尼西亚东南苏拉威西省，科拉卡县，波马拉镇，园区规划面积11,808公顷。
Pomalaa Industry Park is located in Pomalaa Town, Kolaka County, Southeast Sulawesi Province, Indonesia, with a planned area of 11.808 HA.



A 苏拉威西省科拉卡县波马拉镇
Pomalaa Town, Kolaka County, Southeast Sulawesi Province

Note:
● 附近矿区
Nearby Mining Area

园区优势 Advantages of the Industrial Park

镍资源丰富
Rich in Nickel Resources

绿色能源
Green Energy

基础设施健全
Sound Infrastructure

一站式服务
One-stop Service

交通便利
Convenient Transportation

4 资源优势 Excellent Resources

Sulawesi Island
Indonesia



A 波马拉矿山自身资源 Pomalaa Mine Resources

- 褐铁矿资源量4.91亿湿吨, 镍品位1.11%, 钴品位0.13%。
Limonite resources: 491 million WMT, with nickel average around 1,11%, and cobalt around 0,13%.
- 腐岩矿资源量1.23亿湿吨, 镍品位1.87%。
Saprolite resources are 123 million WMT, with nickel grade of 1,87%.
- 矿权面积达到20.286公顷, 具备资源增储空间。
The IUP covers an area up to 20.286 ha and still has potential of reserve increase as converted from resource.

B Malili资源聚集地 Malili Resource Gathering Area

- 北向50-100海里Malili资源聚集地, 29个镍矿权面积52.455.81公顷。
There are 29 IUPs located in Malili resource gathering area which spreads 50-100 sea miles to the north of Malili, covering an area of 52.455,81 ha.

C Kabaena岛资源聚集地 Kabaena Island Resource Gathering Area

- 南向70海里Kabaena岛资源聚集地, 14个镍矿权面积32.398.56公顷。
There are 14 IUPs distributed in Kabaena Island resource gathering area which spreads 70 sea miles to the south, covering an area of 32.398,56 ha.

5 园区建设规划项目 Planned Projects

5.1 园区初期规划建设设施 Initial Planned Facilities



● 码头
Port

● 生活区
Living Area

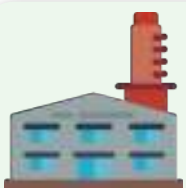


电厂
Power Plant

辅助设施
Auxiliary Facilities

5.2 初始入园企业 Initial Enterprises

湿法项目KNI KNI HPAL Project



产品:MHP
Product: MHP

火法冰镍项目 RKEF Nickel Matte Project



产品:高冰镍
Product: High nickel matte

电力公司 Power Plant Company



2030年总装机容量达:4,100 MW
Total installed power by 2030: 4.100 MW
项目包含: 光伏发电, 水力发电, 天然气发电
Project includes: Solar power, Hydroelectric, Natural Gas power generation.

精炼公司 Refining Company



原料:MHP, Nickel Matte
Raw materials: MHP, nickel matte
产品:硫酸镍、硫酸钴、硫酸锰等
Products: nickel sulfate, cobalt sulfate, manganese sulfate, etc.

电池回收公司 Battery Recycling Company



废旧锂电池、不合格电池、电池生产废料
Waste lithium batteries, unqualified batteries, battery production waste
产品:硫酸镍、硫酸钴、硫酸锰、碳酸锂等
Products: Nickel sulfate, cobalt sulfate, manganese sulfate, lithium carbonate, etc.

船运公司 Shipping Company



园区公司为大股东
IPIP is the largest shareholder
运力:1,000万吨/年
Capacity: 10 mt/a
船型:驳船、远程货轮、游艇(交通)
Ship type: Barge, Long Range Freighter, Yacht (Transportation)

码头公司 Port Company



园区为最大股东
IPIP is the largest shareholder.

设备租赁公司 Equipment Rental Company



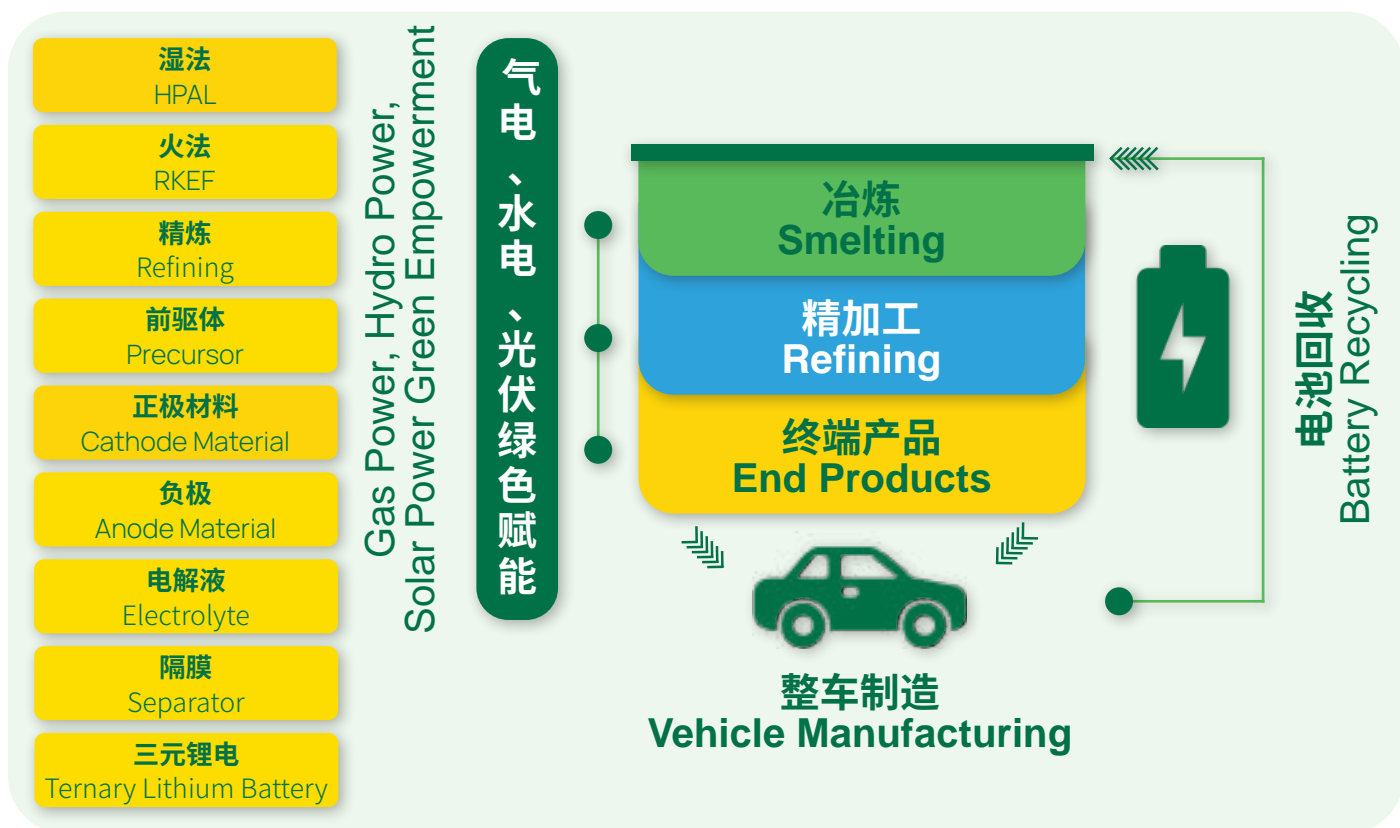
各类设备齐全(工程建设+运输+生产运营)
All kinds of equipment (engineering construction+transportation+production operation)

前驱体公司 Precursor Company



原料:硫酸镍、硫酸钴、硫酸锰等
Raw materials: nickel sulfate, cobalt sulfate, manganese sulfate, etc.
产品:前驱体
Product: Precursor

5.3 园区特色 (锂电全产业链闭环工业园)
Feature (Closed Loop of Whole Lithium Battery Industry Chain)



5.4 园区特色 (清洁能源)
Feature (Green Energy)



6 园区投资计划规模、带动就业 Investment Plan Scale, Driving Employment

经济贡献

Economic Contribution

园区初期基础建设投资计划约3亿美元

Initial infrastructure investment plan in the park about US\$ 300 million.

入园企业初期投资计划金额预计100亿美元

The initial investment plan of tenant enterprises is estimated to be US\$ 10 billion.

展望投入计划金额可达到1000亿美元

The prospective investment plan is expected to reach US\$ 100 billion.



带动工作机会、推动地方发展

Promote Job Opportunity and Local Development

工业园可创造 5 - 10万新就业机会。

The industrial park can create 50,000 to 100,000 new job opportunities.

带动区域经济发展、提高社会保障、提高当地的收入水平。

Promote regional economic development, improve social security, increase local income levels.

推动地方城市化建设、建设生活辅助设施、加快区域城镇化进程。

It will promote urban construction, construct living facilities and accelerate the process of regional urbanization.

7 社会责任 CSR

IPIP自2023年起将启动CSR相关社区项目, 项目包含如下领域:

IPIP will launch CSR community projects in 2023, including following areas:



农业畜牧渔业

Agriculture, Animal Husbandry, Fishery

修建养殖场
Farm Building

现代农业
Modern Farming

修建鱼塘
Fish Pond Building

修建示范农场
Ecosystem Farm Building



宗教

Religion

修建清真寺
Mosque Building

完善祷告设施
Prayer Related Facilities Improving



教育

Education

奖学金
Scholarship

职业学校
Skill Training School

助学捐赠
Donation for Education

失业人员工作技能培训
Working Skills Training Course for the Unemployed

留学项目
Study Abroad Programs



基础设施

Basic Facility

水、电完善
Water and Electricity Improvement

公共设施建设
Public Facilities Construction

交通-道路
Road

交通-机场
Airport



捐赠 Donation



自然灾害
Natural Disaster

公益捐赠
Public Donation

医疗捐赠
Medical Donation

孤儿院
Orphanage

扶贫
Poverty Relief

宗教
Religion

医疗 Medical Sanitation



改善医疗条件
Improved Medical Condition

免费医疗服务
Free Medical Treatment

8 招商 Investors

印尼波马拉工业园区 (IPIP) 是一个锂电全产业链闭环工业园, 以绿色清洁能源电力为依托, 旨打造从资源开发到全锂电材料的一体化产业链, 园区于2022年荣获印尼政府支持, 取得国家战略资质。我们致力于将园区建设成为技术领先、资源节约、环境友好、ESG治理领先的世界级高端锂电产业园。

我们热烈欢迎全球投资者来IPIP投资, 共同为印尼社会经济做出贡献!

加入我们 Contact Us



Indonesia Pomalaa Industrial Park (IPIP) is a closed industrial park with a complete lithium battery industry chain that relying on green and clean energy power, aiming to create an integrated industrial chain from resource development to full lithium battery materials. The Industrial Park got the support from the Indonesian government in 2022 and obtained national strategic qualification. We are committed to building our industrial park into a world-class high-end lithium battery industrial park with leading technology, resource conservation, environmental friendliness and leading ESG governance.

We warmly welcome global investors to invest in IPIP and make contributions to Indonesia's social economy together!

邮箱
Investor Relation E-Mail

office@ipip-hy.com

Company Profile

PT Indonesia Pomalaa Industry Park



**PT INDONESIA POMALAA
INDUSTRY PARK**

Indonesia Head Office

PT Indonesia Pomalaa Industry Park

Sopo Del A Tower 19Th Floor, Jl. Mega Kuningan Barat III,
Lot 10, 1-B Kawasan Mega Kuningan, Jakarta, Indonesia
Tel : 021-50806573

China Head Office

Zhejiang Huayou Cobalt Co., Ltd

No.18, Wuzhen East Road, Tongxiang Economic
Development Zone, Zhejiang Province, PR China
Tel : 0086-573-88587878

Social Media

E-Mail : office@iPIP-hy.com

LinkedIn : Indonesia Pomalaa Industry Park