



atawey
ANYTIME, ANYWHERE, ENERGY

»» AN EXPERT PARTNER
FOR YOUR HYDROGEN STATION PROJECTS





ataway

ANYTIME, ANYWHERE, ENERGY

LET'S ACCELERATE HYDROGEN MOBILITY



+ 10
years of expertise



30
stations commissioned



+ 90
experts in France and
abroad



Products

Services



Mission

Sector



Customers

Partners

Suppliers



Employees

Teams

EXPERTISE² + COMMITMENT³ + COLLABORATION⁴ = PERFORMANCE[∞]

at *your service!*

In a fast-changing world in which companies and local authorities are working to decarbonize mobility, the development of recharging technologies represents a crucial challenge. This development requires easy access to hydrogen.

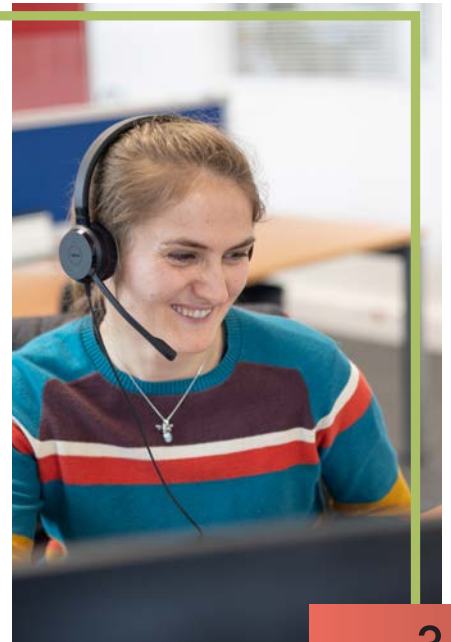
Ataway, a key player in hydrogen stations, offers all hydrogen project owners customized solutions based on personalized support, expert services and a range of high-performance, modular hydrogen refueling stations to refill all types of vehicles whenever and wherever the user needs it - **AnyTime, AnyWhere, Energy.**

MODULAR, HIGH-PERFORMANCE



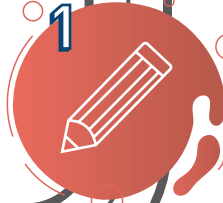
HYDROGEN REFUELING STATIONS

EXPERT SUPPORT



TAILORED TO YOUR NEEDS

360° SUPPORT

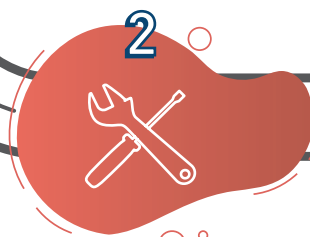


1. DESIGN

- ✓ Needs analysis
- ✓ Sizing

ata'config

- ✓ Technically and economically relevant solution



2. IMPLEMENTATION

- ✓ Project management assistance (layout, permitting, civil engineering, etc.)
- ✓ Optimization of the user journey
- ✓ Manufacturing
- ✓ Safety studies & factory acceptance tests



3. INSTALLATION

- ✓ On-site safety studies & Equipment testing
- ✓ Training / Documentation
- ✓ Commissioning

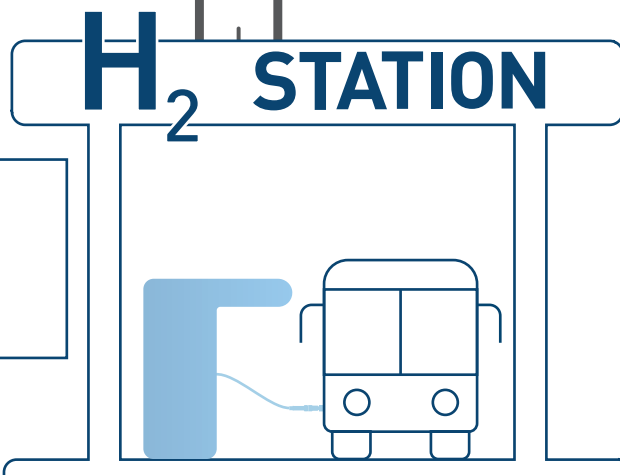
ata'start



4. OPERATION

- ✓ Daily self-test
- ✓ Maintenance
- ✓ Supervision
- ✓ Technical operation & Regulatory control

ata'check



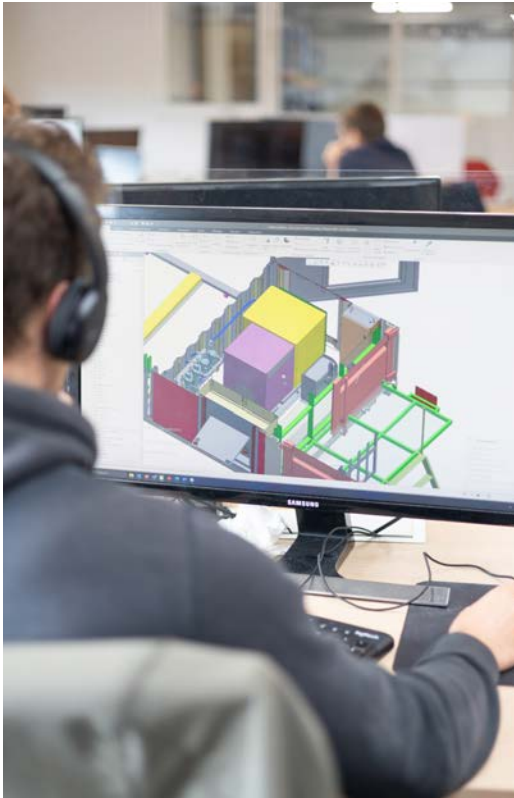
✓ Services

✓ Products

1. DESIGN

MEET YOUR SPECIFIC NEEDS WITH A CUSTOMIZED OFFER

Designing hydrogen stations that provide hydrogen when and where the user needs it is just the beginning of what we can do for you. As a partner, we are here to help you every step of the way. A single goal: guarantee the performance of your station from the very start of your project, for your current... and future needs.



Needs analysis and sizing

Ataway has designed Ata'Config, a software package that allows you to size the distribution capacity of your future station, its options and its scalability, according to your uses (vehicles, capacity, back-to-back...) and your land and time constraints.

ata'config

Modular, high-performance stations !



MOBILE

For temporary uses

Up to 150 kg/d



COMPACT

For captive uses and ecosystem ramp-up

Up to 300 kg/d



EVOLUTIVE

For intensive uses

3 t+

MOBILE STATION

Rapidly deployable thanks to a unique design, the Ataway mobile stations, compress and distribute hydrogen. Move it wherever you need it, so that you can speed up and facilitate the deployment of hydrogen mobility, even in the most inaccessible areas. Whether for testing and demonstrating hydrogen vehicles, building sites, temporary applications, backing-up fixed stations during maintenance or initiating ecosystems, the mobile station has a wide range of uses.



SPEED

Available for rental or purchase, the mobile station can be deployed rapidly, as it requires no civil engineering. What's more, the Ata'Start program, developed by Ataway's teams, gives it the fastest commissioning time on the market.



TEMPORARY

In addition to facilitating access to hydrogen for testing all types of vehicles in real-life situations (light or heavy vehicles, forklifts, trains, boats, special machines, etc.), the Ataway mobile station opens the way to new uses: needs in the building and civil engineering market, during events, as a transition station or as a back-up for a fixed station during maintenance.





FLEXIBILITY

Thanks to the mobile station, it's no longer the user who comes to the station, but the station that comes to the user.

It can be installed in isolated areas or those not equipped with a hydrogen refuelling station.



THEY TRUST US: HYLIKO

Ataway is supporting Hyliko in the zero-emission energy transition of its Heavy Duty Vehicles fleets.



« Ataway offers a unique system for renting mobile hydrogen refuelling stations. This is one of the most accomplished products available on the market, with a high level of service. »

Denis Héchard,
Director of Hyliko's station network



PERFORMANCES:



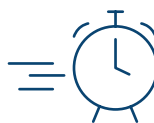
Hydrogen distribution capacity
Up to 150 kg/d



Pressure
350 bar



Fuelling communication



Fastest commissioning on the market
(4h)



CE certification

For more information, request a case study !

COMPACT STATION

Wouldn't you like to start optimising the TCO of your project right away?

Compact stations let you get started quickly with hydrogen mobility. They are fast to install because they require very little civil engineering. It's a smart way to reduce fossil fuel consumption and CO2 emissions now, and to get your project up and running as quickly as possible.



COMPACITY

Compact stations are turnkey stations : they integrate storage, compression, distribution and Human Machine Interface (HMI) into a single package.



EASY

These compact stations require little civil engineering, making them easy to install. What's more, their Plug&Play architecture means they can be up and running quickly. Finally, their investment and operating costs are scaled to small and medium-sized fleets, making them an ideal solution for captive fleets or ecosystem ramp-up projects.



MOVING

One of the real advantages of compact stations is that they can be moved. So they can:

- > To be installed rapidly on a site reserved for a future evolutive station;
- > Fuel vehicles - while the work and commissioning of this final station is carried out and uses develop;
- > Be moved elsewhere, as initiation or extension stations.



H₂ AS A SERVICE

The goal: encourage new players to take the step towards low-carbon mobility. By offering a complete range of rental with a purchase option, we give you the possibility of adapting your investments to the timeframe of your project.

THEY TRUST US: SYDEV

Commissioned in October 2023, the Compact M station has been designed to supply green hydrogen to the two garbage trucks of the Saint Gilles Croix de Vie Agglomeration. It could to be relocated whenever and wherever the SYDEV wants to follow the hydrogen uses development in the area



« We chose Ataway because of their expertise in hydrogen distribution, but also their Compact M station met our needs. We appreciate how easy it is to set up, and we've seen an excellent availability rate since it went live. »

François Challet,
SYDEV Hydrogen Project
Manager



PERFORMANCES:



Hydrogen distribution capacity
Up to 300 kg/d



Pressure
350 and 700 bar



CE certification



Fuelling communication



Optimised fuelling protocols for each vehicle

For more information, request a case study !

EVOLUTIVE STATION

Designed to be adaptable to the different phases of your project and optimize its profitability, our evolutive stations have been developed to support your needs and enable you to phase your projects to optimize profitability and performance (energy, but also distribution).

LARGE CAPACITY

Evolutive stations address the heavy and light mobility markets with medium and large capacities ranging from 300 kg/d to 3 t/d +. Their distribution capacity can evolve over time to keep pace with growth in the number of vehicles to be refuelled. High Flow (120 g/s) compatible, they adapt to all your performance needs.

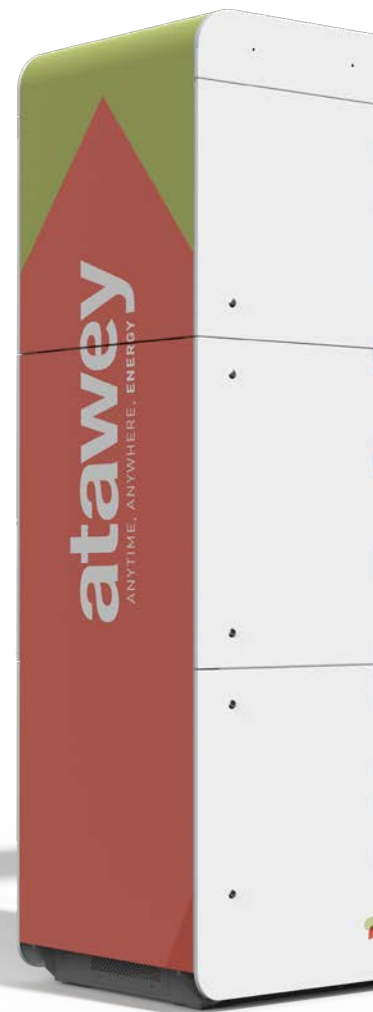
Example for a 2t station:

 x 400 OR

 x 130 OR

 x 70 OR

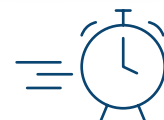
 x 40



EFFICIENCY

Less energy consumption, more fill-ups !

By choosing our scalable solutions, you're opting for an optimised process that's in tune with your uses and how they evolve. The programmable logic controller (PLC) also selects the right filling ramp for each vehicle; including MC Formula for energy savings and fast filling.



Filling time :

LDV : 3 min

HDV : 15 min



MODULARITY

Our evolutive stations have been designed so that every component (storage, terminals, etc.) required for the success of your project can be integrated from the outset or in the short, medium or long term; like bricks that fit together.



SCALABILITY

The components integrated into your station are designed to be upgradeable: addition of a distribution terminal, increase of storage and cooling capacity, connection to an electrolyser... increase the size of your fleet whenever you want, without limits.

THEY TRUST US: HYMPULSION

The large-scale project Zero Emission Valley, backed by the Auvergne-Rhône-Alpes region (France), involves the deployment of over 400 hydrogen-powered light commercial and passenger vehicles and more than 115 buses, trucks and coaches.

The first two Zero Emission Valley stations were manufactured and installed by Ataway and are already being operated by HYmpulsion: the first in Chambéry and the second in Moûtiers. Three new Ataway stations will be installed in 2024.



« Ataway's advantage is its ability to support us as our project itself evolves. This capacity comes from its ability to innovate and meet a number of technological challenges. Added to this are the women and men who put their trust in us, who are mobile and available, and who, in a spirit of transparency, help us to succeed in raising this sector to the top. »

Thierry Raevel,
President of HYmpulsion



PERFORMANCES:



Hydrogen distribution capacity

From 300 kg/dto 3 t and more
Back-to-Back as needed



Pressure

350 and 700 bar



Fuelling communication



CE certification



Optimised fuelling protocols for each vehicle

For more information, request a case study !

Once you've chosen your station, our support teams take over. A single goal: guarantee your project's success in terms of time and investments.

2. IMPLEMENTATION

Project management assistance

To ensure the success of your project, our team of project managers will manage your project: planning, periodic reports, progress reports, etc. Our experts can help you with regulatory, administrative, technical and safety issues (PED, ICPE).



3. INSTALLATION

Fast, safe commissioning!

Developed by our teams, the Ata'Start software is used to test the correct operation of all plant components at the time of commissioning.

ata'start

> RELIABILITY / SAFETY

Our R&D team works closely with our suppliers to integrate the best components with proven reliability. Safety studies are also carried out by our in-house teams (HAZOP, LOPA, ATEX, etc.) and by external notified bodies, first in the factory, then on site.

> MAXIMIZED AVAILABILITY

Technology for performance!

In the event of maintenance on one of the compressors, the station can be designed to continue distributing hydrogen in **downgraded mode**.

What's more, developed by our teams, the Ata'Check program carries out a daily automated test of all the station's hydrogen circuits, to guarantee that the station is running smoothly.

ata'check



4. OPERATION

Keep your station in perfect working order with our technical support! Whether you buy or rent a station, our team of engineers and technicians provide daily support, thanks to their in-depth knowledge of our devices. This is the basis of our After-Sales Service offer.

Maintenance

Our support service (direct or via international partners) also offers you preventive maintenance customized to the use of each station, as well as proposals for continuous improvement.

Supervision

Once your station is operational, Ataway provides you with tools for remote monitoring of the performance, enabling the operator to diagnose potential faults and define the actions to be taken.

Technical operation

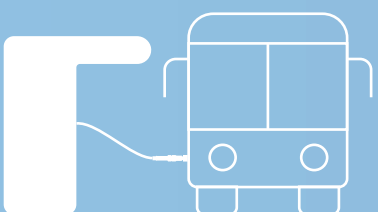
Operation is a key element in the availability of a hydrogen station. It includes regular and regulatory maintenance, as well as daily monitoring of performance and safety. We can help you with training courses in France and abroad.



A SMOOTH USER EXPERIENCE

Because display panels are a powerful communication tool, Ataway can help you customize your station (regulatory pictograms, graphic codes to facilitate and optimize the user experience, etc.). Our Human Machine Interface (HMI) complements the design with an intuitive application to guide the user. And that's just the visible part of the user journey. Our recognized distribution expertise includes a PLC that selects the filling ramp (including MC Formula) according to vehicle type, to optimize filling time.

H₂ STATION



AND IF
NEED BE...

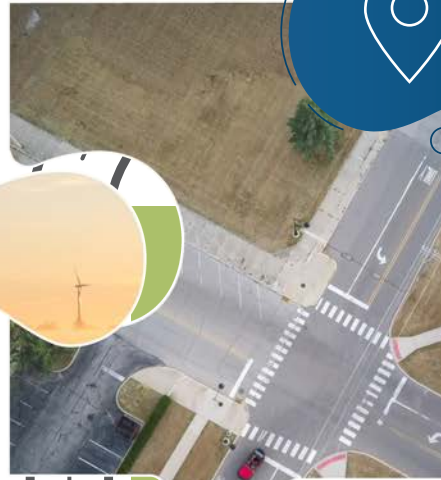
PROJECT SET-UP

- ✓ Co-development
- ✓ Co-investment

ENERGY
SUPPLY



LAND

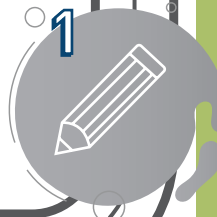
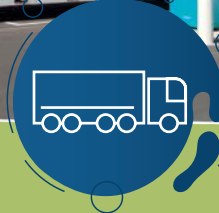


INFRASTRUCTURE

- ✓ Production
- ✓ Distribution

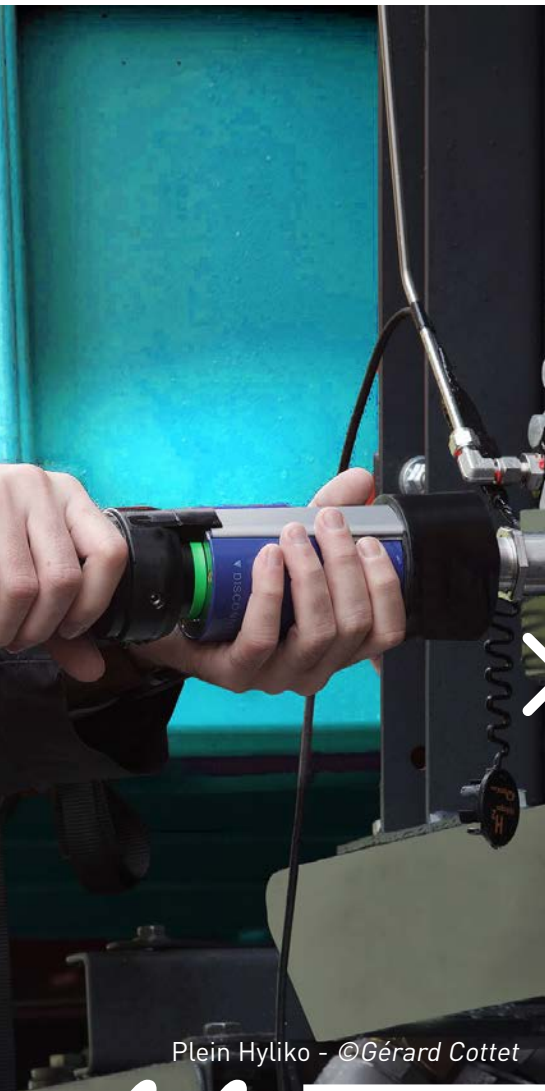


USES



ECOSYSTEMS PARTNER

If you have an infrastructure construction project and need a partner to materialise it, discover our ecosystem co-construction service.



Plein Hyliko - ©Gérard Cottet

BUILDING THE FUTURE

Because hydrogen mobility is one of the solutions for decarbonizing society, Ataway co-constructs and co-invests in projects to accelerate infrastructure deployment.

»» FOCUS ON THE ARV'HY PROJECT

Located in Vougy, in the heart of the Arve Valley, the project involves the construction of a multi-service station for the Super U store, to reduce CO2 emissions and contribute to the decarbonization of the valley.

“

« Ataway's technical skills and know-how complement Axpo's energy management, making it possible to produce green, competitive hydrogen for the valley's mobility needs. »

Max Gantet,
Hydrogen Project Developer, Axpo

”

2025
COMMISSIONING

2
ALTERNATIVE
FUELS

100 %
CARBON-FREE HYDROGEN,
80% OF WHICH IS RENEWABLE



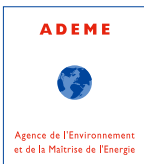
A KEY PLAYER IN THE HYDROGEN INDUSTRY



COMMITTED

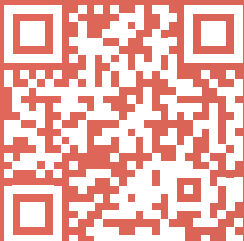
&

SUPPORTED



Plein Hyliko - ©Gérard Cottet

CONTACT US



ATAWEY



@atawey



Atawey



@AtaweyOfficiel