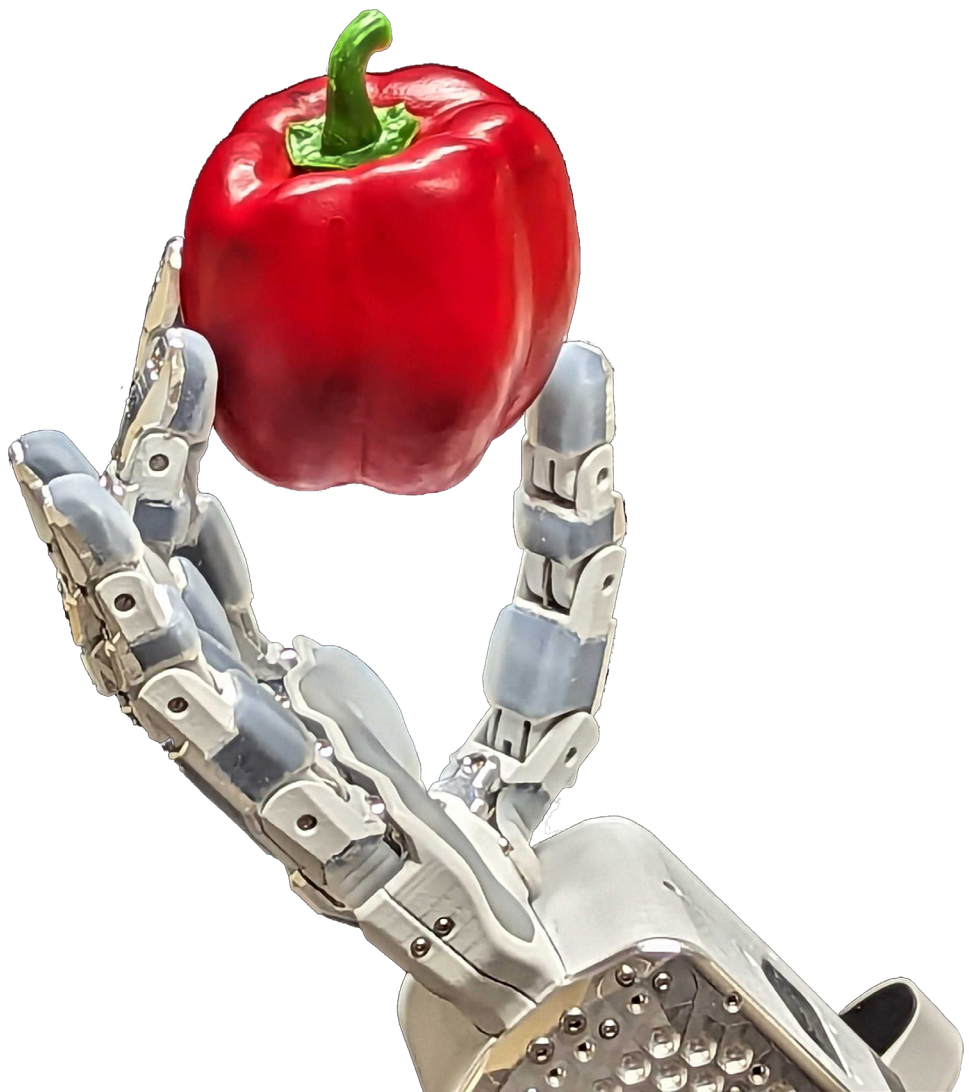




SARCOMERE
DYNAMICS

ARTUS Lite

... bringing near-human capability to automation



Web: sarcomeredynamics.com

Sales: info@sarcomeredynamics.com

ARTUS Lite

Our entry-level hand for “dull, dirty, and dangerous” tasks. This agnostic universal end-effector was built to automate complex industrial tasks not possible with conventional grippers. This compact, lightweight, high dexterity, robotic hand replicates human functionality, allowing the automation of tasks in dynamic environments.

All robotic hand models being developed by Sarcomere will be compatible with each other. Our customers can start to develop AI, ML, and kinematic models with the ARTUS Light hand now; once the newer and more advanced hands are released, the data sets can be transferred to the new model for seamless operations.

Our goal is to build a near-human robotic hand by end 2024, matching the human hand in form factor, degrees of freedom (DoF), and strength, without the high weight, bulk or cost of conventional technologies.

Applications

Pick and Place	Pick and place automation in greenhouses, warehouses, and recycling. Ask us about our trial with greenhouse, warehouse, and manufacturing customers.
Tele-operations	Ideal for tele-operations to provide precise, confident remote manipulation. Ask us about our autonomous systems trial for military applications.
Humanoid Robots	Our hands provide high dexterity functionality in a compact and lightweight end-effector, with strong practical grip strength (see specification chart).

Technical Information

System Overview

Designed for indoor industrial operations to automate menial labor*

Rugged construction to withstand high force grips and impact*

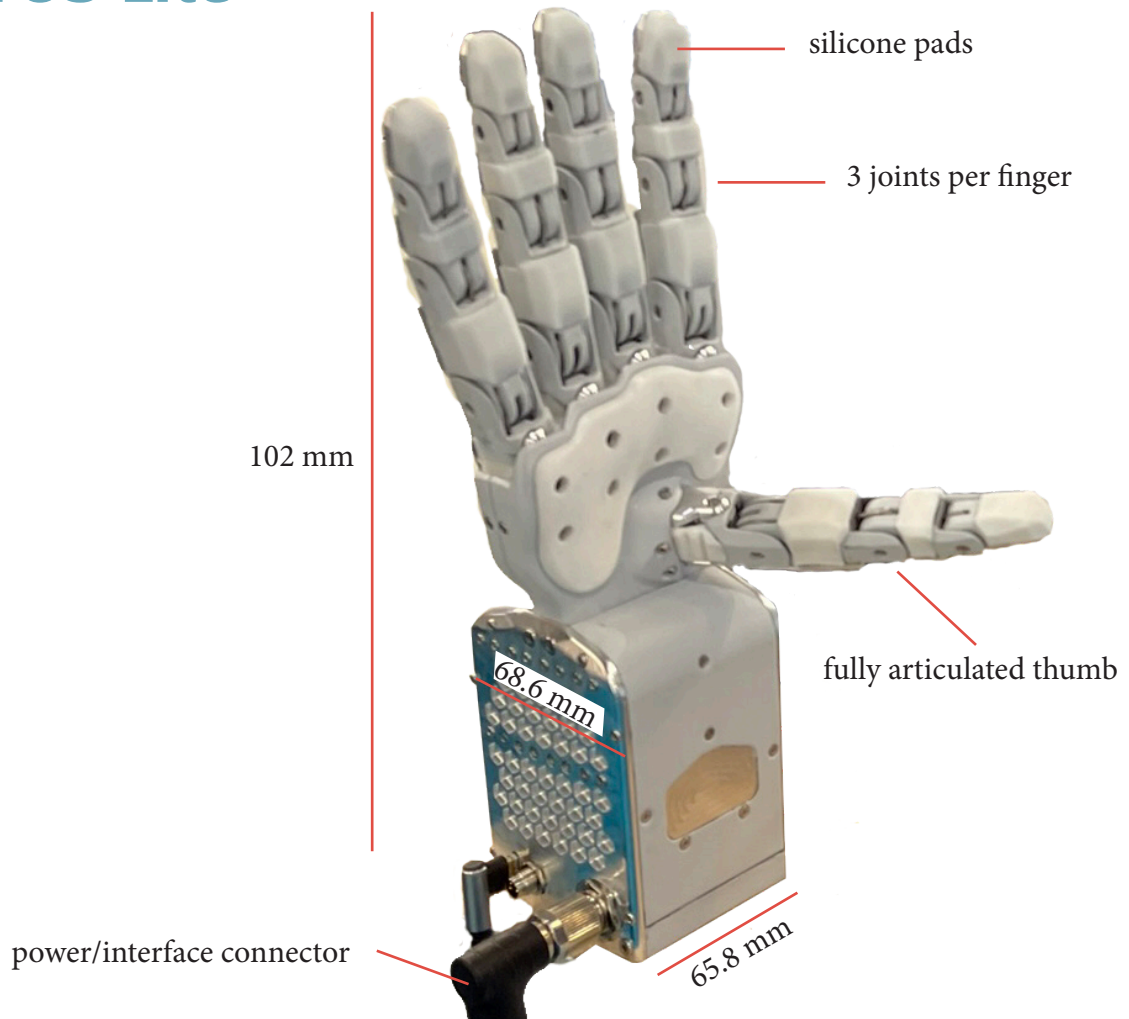
Internal sensing of finger joint positioning and force application

Compatible with all systems

Connectors/Interface: ISO 9409-1-50-4-M6, Canbus, Serial, WiFi*

* *Speak to our engineers to customize for your unique needs*

ARTUS Lite



Mechanical Overview	
Digits	5 (4 fingers and 1 thumb)
Joints	20 articulated joints (4 per finger)
Degrees of Freedom	16 independant DoF and 4 under actuated DoF
Weight	1.1 kg
Speed - Open/Close	0.6 Hz
Strength - force at fingertips	1.5 kg
Max Payload Capacity	5 kg (contact us for larger payloads from 10 to 15 Kg)
Materials	Carbon Fiber, Aluminum and Silicone
Power Supply	12 volts DC, 120 watts



SARCOMERE DYNAMICS

