

SchemELECT

CAD applied to Industrial Electricity and Automation in the Industry



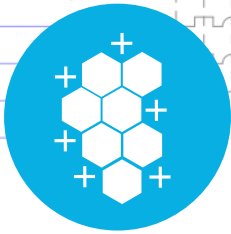
High Performance CAD for the Industry and Building





Electrical CAD software

Modular



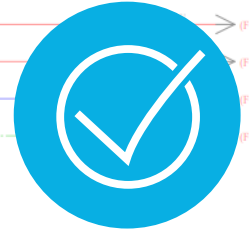
With SchemeELECT, you can pick up features by module accordingly to your charge of work and studies. SchemeELECT is compatible with the different Windows™ OS, in standalone mode or in floating licenses.

User Friendly

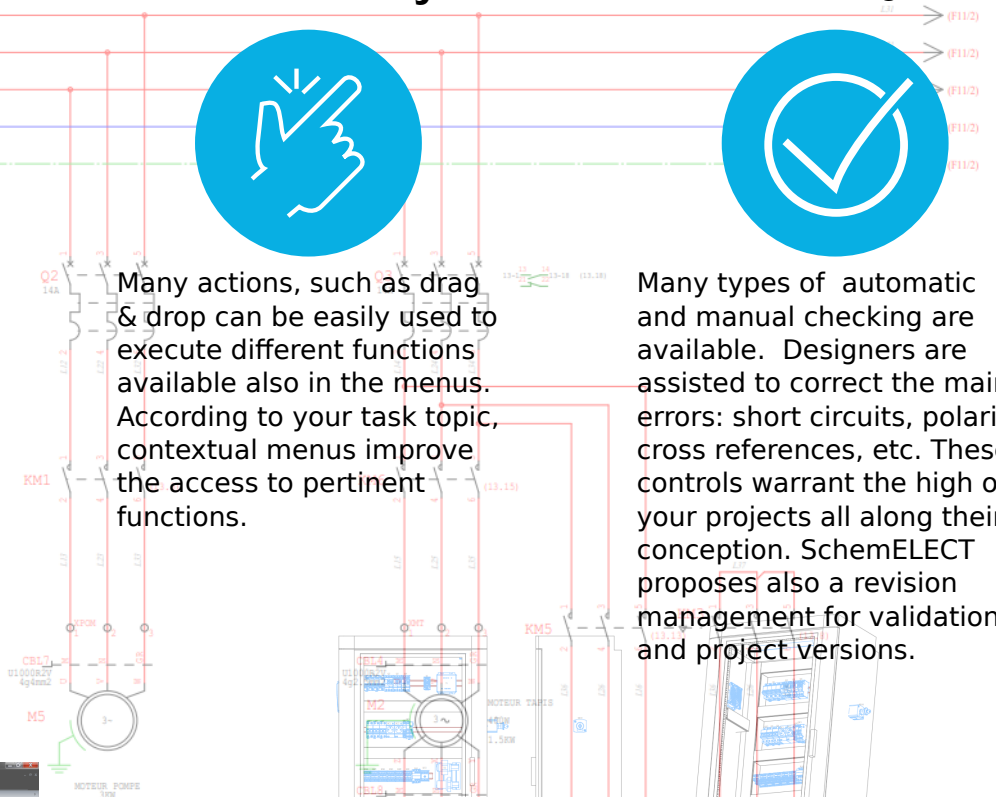
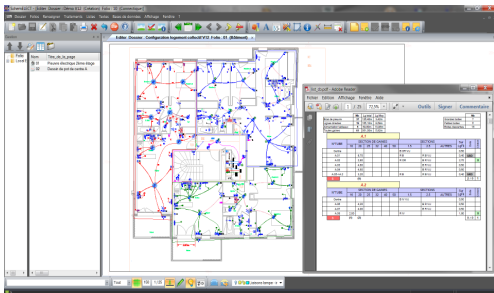


Many actions, such as drag & drop can be easily used to execute different functions available also in the menus. According to your task topic, contextual menus improve the access to pertinent functions.

Quality



Many types of automatic and manual checking are available. Designers are assisted to correct the main errors: short circuits, polarity, cross references, etc. These controls warrant the high of your projects all along their conception. SchemeELECT proposes also a revision management for validations and project versions.



errors reduction

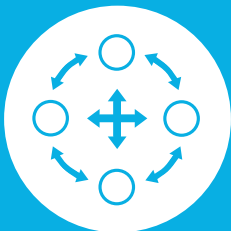


time saver



cost saving

Openness



SchemeELECT allows a wide range of graphic standards such as DWG™, DXF™, PDF™. The lists are usable by tables (Excel™, Access™, ...). SchemeELECT manages PLC exchanges too. The link with manufacture databases is done by ASCII files or by ODBC™ protocol (Oracle™, Access™)...

Libraries



SchemeELECT is provided as a complete package with graphic libraries, 3D volumes and data sheet supplied by manufacturers. They can easily be edited to adapt them to your needs with specific informations (reference, graphic symbols, price, weight, etc).

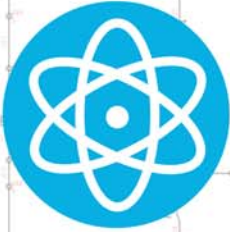
Graphic Editor



SchemeELECT provides tools to customize symbols, frames and to do free drawings. Furthermore, you will be able to use a wide range of functions to draw geometrical elements, to dimension, to insert text and cross-hatchings as well as construction lines. Logos such as DWG™, DXF™, BMP™, JPG™ can be inserted in your frames or in the project.

for industry

Generalities



The Basic Module is used to create schematic diagrams by easy and fast actions such as symbols, blocks and wire insertions. Automatic processes like the connection cut, auto connection, are also available. A translation function is included in this module to convert the texts according to your own dictionary or the graphic to the main standards such as ANSI, BS, CEI, JIS...

Cross Reference Wire Numbering Module



The Cross-Reference and Wire Numbering Module processes dynamic cross-references between symbols. SchemELECT checks also the amount of contacts for a symbol and compares it to the material specifications in order to avoid any mistakes. A wide range of settings permits matching the wire numbering process with your wire identification preferences.

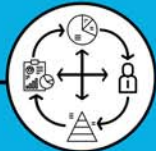
Terminal Block



The Terminal Block Module allows the creation of the spider diagram. This representation is used to represent the installation through block diagrams, by defining different locations and cable routes...



high precision



easier management



adaptability



Bill of Materials Instrumentation



The Bill of Materials Module computes the extraction of data tables according to the user settings. These lists can be printed or inserted in the project pages. You can set up different kinds of B.O.M.: for the suppliers, the buying department and label printing. The Instrumentation Module creates the loop diagrams with data of graphic blocks, instruments, wires, P.L.C, ...

Cabinet



The Cabinet Layout assists designers to set up rails, cable ducts and any components located in your cabinet. Different kinds of view are available such as the section particularly useful to adjust the position. It is available in 2D 1/2 modelling or with FTZ-Panel 3D in real 3D. SchemELECT is interfaced with label machines too.

Harness - Pneumatic Hydraulic - Multi-projet



The Harness Module achieves the drawing of the electrical harnesses, the definition of the connectors and the different linked lists. With SchemELECT, you can draw pneumatic, hydraulic, grafcet or logical projects too. A multi-project management is allowed to improve the organization of large affairs.

They trust us



Choice of services

FTZ offers various services such as telephone support, training, libraries, etc.

Choice of configurations

Depending on your needs, FTZ offers suitable configurations.



contact@ftz.fr



ZAC de Frocourt
23, Rue Antoine de Saint Exupéry
54710 Fleville-devant-Nancy, France



+33 (0)3 83 35 05 78

www.ftz.fr