

High Efficiency Aluminium Housing Three Phase Induction Motors

MME SERIES
80-160 FRAME SIZES



TECHNICAL CHARACTERISTICS

- Rated outputs and frame sizes in accordance with IEC60034 standards
- Duty type S1(continuous duty) with sufficient thermal margin to withstand short overload
- Enclosure protection IP55
- Insulation class F, temperature rise class B
- Maximum ambient 40°C
- Altitude \leq 1000 m a.s.l.

GENERAL SPECIFICATIONS

- Terminal box rotates 4 x 90°
- Removable feet, multi mount - terminal box left or right hand side
- Enclosed shaft key

CONSTRUCTION MATERIALS

- Frame - Aluminium
- End shields - Aluminium/Cast Iron
- Fan cowl - Steel
- Fan - Plastic
- Shaft - Medium carbon steel (stainless available on request)
- Terminal box - Aluminium

IE2 Efficiency
Conform to IEC/EN60034-30:IE2



HUIFENG MOTORS CO., LTD.

Qinxiyang Industry Area, Fuan City, Fujian Province, China

FACTORY

Tel: +86-593-639 6669 Fax: +86-593-639 6166
Email: sales@hfmotor.com
hui Feng@public.ndptt.fj.cn
<http://www.hfmotor.com>
<http://www.huifeng-motor.com>

OFFICE

Tel: +86-591-8787 8078 Fax: +86-591-8781 2731
Email: sales@hfmotor.com
hui Feng@public.ndptt.fj.cn
<http://www.hfmotor.com>
<http://www.huifeng-motor.com>



Performance Data (50Hz)

MME SERIES HIGH EFFICIENT ALUMINIUM HOUSING 3-PHASE INDUCTION MOTORS

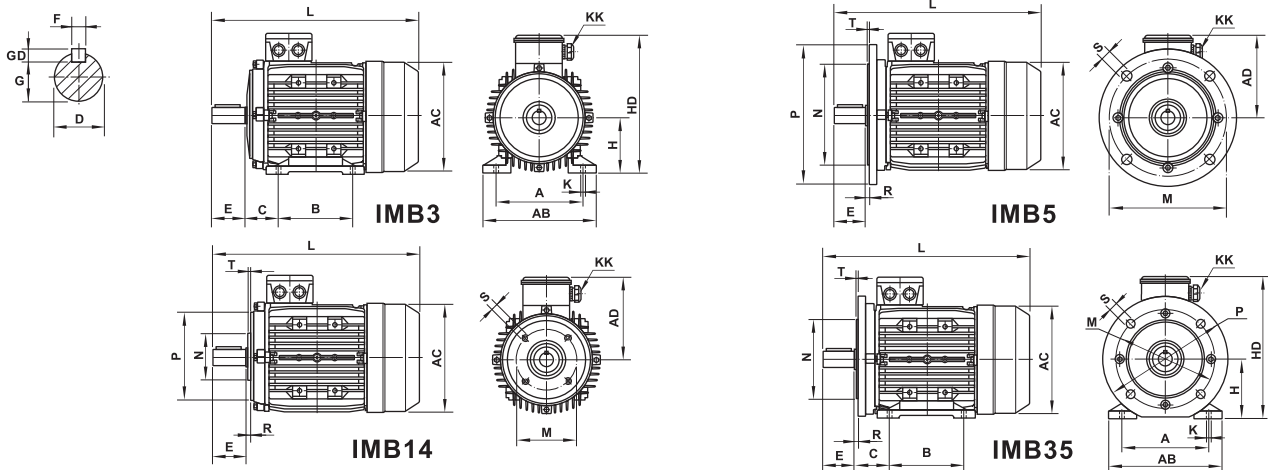
Motor Type		Power (kW)	Current at Volts I _N (A)			Full Speed (RPM)	Eff@ Full-Load (%)	Full-Load Power Factor cos φ	Rated Torque T _N (N·m)	For D.O.L Starting		Break down Torque T _{max} /T _N	Rotor Inertia m ² (kg·m ²)	Sound Power @no-load dB(A)	Weight B3 kg
Series	Type		380V	400V	415V					I _{st} /I _N	T _{st} /T _N				
MME	801-2	0.75	1.8	1.7	1.6	2820	77.4	0.82	2.54	6.8	2.3	2.3	0.0009	71	12
MME	802-2	1.1	2.6	2.4	2.4	2860	79.6	0.82	3.67	7.3	2.3	2.3	0.0011	71	13
MME	90S-2	1.5	3.4	3.2	3.1	2875	81.3	0.83	4.98	7.6	2.3	2.3	0.0016	75	18
MME	90L-2	2.2	4.8	4.6	4.4	2885	83.2	0.84	7.28	7.8	2.3	2.3	0.0020	75	21
MME	100L-2	3	6.3	6.0	5.7	2890	84.6	0.86	9.90	8.1	2.3	2.3	0.0042	79	28
MME	112M-2	4	8.2	7.8	7.5	2930	85.8	0.86	13.0	8.3	2.3	2.3	0.0080	79	37
MME	132S1-2	5.5	11.0	10.5	10.1	2940	87.0	0.87	17.9	8.0	2.2	2.3	0.0135	83	51
MME	132S2-2	7.5	14.9	14.1	13.6	2940	88.1	0.87	24.4	7.8	2.2	2.3	0.0152	83	56
MME	160M1-2	11	21.3	20.2	19.5	2945	89.4	0.88	35.7	7.9	2.2	2.3	0.0475	87	91
MME	160M2-2	15	28.4	26.9	26.0	2940	90.3	0.89	48.7	8.0	2.2	2.3	0.0578	87	102
MME	160L-2	18.5	34.7	33.0	31.8	2940	90.9	0.89	60.1	8.1	2.2	2.3	0.0667	87	112
MME	802-4	0.75	1.9	1.8	1.8	1430	79.6	0.74	5.00	6.5	2.3	2.3	0.0024	67	14
MME	90S-4	1.1	2.8	2.6	2.5	1420	81.4	0.74	7.40	6.6	2.3	2.3	0.0030	67	18
MME	90L-4	1.5	3.7	3.5	3.4	1420	82.8	0.75	10.1	6.9	2.3	2.3	0.0038	67	23
MME	100L1-4	2.2	5.0	4.8	4.6	1445	84.3	0.79	14.5	7.5	2.3	2.3	0.0091	68	30
MME	100L2-4	3	6.8	6.4	6.2	1455	85.5	0.79	19.7	7.6	2.3	2.3	0.0118	70	32
MME	112M-4	4	8.8	8.3	8.0	1450	86.6	0.80	26.3	7.7	2.3	2.3	0.0151	73	41
MME	132S-4	5.5	11.8	11.2	10.8	1465	87.7	0.81	35.9	7.5	2.0	2.3	0.0287	73	55
MME	132M-4	7.5	15.7	14.9	14.4	1465	88.7	0.82	48.9	7.4	2.0	2.3	0.0365	78	61
MME	160M-4	11	22.2	21.1	20.3	1465	89.8	0.84	71.7	7.5	2.2	2.3	0.0819	78	93
MME	160L-4	15	29.6	28.1	27.1	1460	90.6	0.85	98.1	7.5	2.2	2.3	0.1039	82	110
MME	90S-6	0.75	2.1	2.0	1.9	940	75.9	0.71	7.60	5.8	2.1	2.1	0.0034	65	19
MME	90L-6	1.1	3.0	2.8	2.7	940	78.1	0.72	11.2	5.9	2.1	2.1	0.0045	65	21
MME	100L-6	1.5	3.9	3.7	3.6	950	79.8	0.73	15.1	6.0	2.1	2.1	0.0149	67	29
MME	112M-6	2.2	5.6	5.3	5.1	955	81.8	0.73	22.0	6.0	2.1	2.1	0.0158	67	35
MME	132S-6	3	7.5	7.1	6.9	965	83.3	0.73	29.7	6.2	2.0	2.1	0.0386	71	49
MME	132M1-6	4	9.8	9.4	9.0	970	84.6	0.73	39.4	6.8	2.0	2.1	0.0523	71	60
MME	132M2-6	5.5	13.1	12.5	12.0	960	86.0	0.74	54.7	7.1	2.0	2.1	0.0711	71	62
MME	160M-6	7.5	17.0	16.1	15.5	970	87.2	0.77	73.8	6.7	2.1	2.1	0.1076	75	92
MME	160L-6	11	24.2	23.0	22.1	975	88.7	0.78	107.7	7.2	2.1	2.1	0.1464	75	109

NOTE: 1.Efficiencies conform to IEC/EN60034-30:2008 IE2.
2.Data is based on tests to IEC/EN60034-2-1:2007.

3.Tolerance:IEC/EN60034-1:2004.
4.Huifeng reserves the right to change specifications of any product without notice.



Installation Dimensions



IEC Frame No.	Mounting Dimensions (mm)																	Overall Dimensions (mm)					Cable Glands KK					
	IMB3 Foot Mounting							IMB5 Flange							IMB14 Face			AB	AC	AD	HD	L						
	A	B	C	D	E	F	GD	G	H	K	M	N	P	R	S	T	M	N	P	R	S	T						
80	125	100	50	19	40	6	6	15.5	80	10	165	130	200	0	12	3.5	100	80	120	0	M6	3.0	162	157	135	215	330	1-M20×1.5
90S	140	100	56	24	50	8	7	20	90	10	165	130	200	0	12	3.5	115	95	140	0	M8	3.0	176	175	145	235	340	1-M20×1.5
90L	140	125	56	24	50	8	7	20	90	10	165	130	200	0	12	3.5	115	95	140	0	M8	3.0	176	175	145	235	370	1-M20×1.5
100L	160	140	63	28	60	8	7	24	100	12	215	180	250	0	15	4.0	130	110	160	0	M8	3.5	205	200	155	255	395	1-M20×1.5
112M	190	140	70	28	60	8	7	24	112	12	215	180	250	0	15	4.0	130	110	160	0	M8	3.5	220	221	175	287	445	2-M25×1.5
132S	216	140	89	38	80	10	8	33	132	12	265	230	300	0	15	4.0	165	130	200	0	M10	4.0	255	260	193	325	485	2-M25×1.5
132M	216	178	89	38	80	10	8	33	132	12	265	230	300	0	15	4.0	165	130	200	0	M10	4.0	255	260	193	325	510	2-M25×1.5
160M	254	210	108	42	110	12	8	37	160	15	300	250	350	0	19	5.0	-	-	-	-	-	-	295	315	235	395	645	2-M32×1.5
160L	254	254	108	42	110	12	8	37	160	15	300	250	350	0	19	5.0	-	-	-	-	-	-	295	315	235	395	645	2-M32×1.5

NOTE: 1.IMB35 refer to the dimensions of IMB3 and IMB5.
2.Mounting dimensions comply with IEC60072-1.
3.Tolerance of Shaft End Diameter D: φ28 and below: j6; φ38 and φ42: k6.
4.Tolerance of Shaft Centre Height H: +0, -0.5.
5.Tolerance of N: j6.
6.Huifeng reserves the right to change specifications of any part without notice.