

YORKING

INDUSTRY GENERATOR SET

DEPENDABLE AND
EFFICIENT JOBSITE POWER



WUXI YORKING POWER CO., LTD.

TEL: 0086-510-85586386

FAX: 0086-510-85586286

EMAIL: info@yorkingpower.com

www.yorkingpower.com

ADD: No.2800, Jiaoyang Road, Anzhen Town, Xishan District, Wuxi, Jiangsu, China



CONTENT

01	OVERVIEW
11	YTO line
13	SDEC line
17	Baudouin line
19	FAWDE line
20	YuChai line
21	YORKING
22	Air cooled Genset
23	Cummins line
27	Perkins line
29	Doosan line
31	VOLVO line

INDUSTRY GENERATOR SET

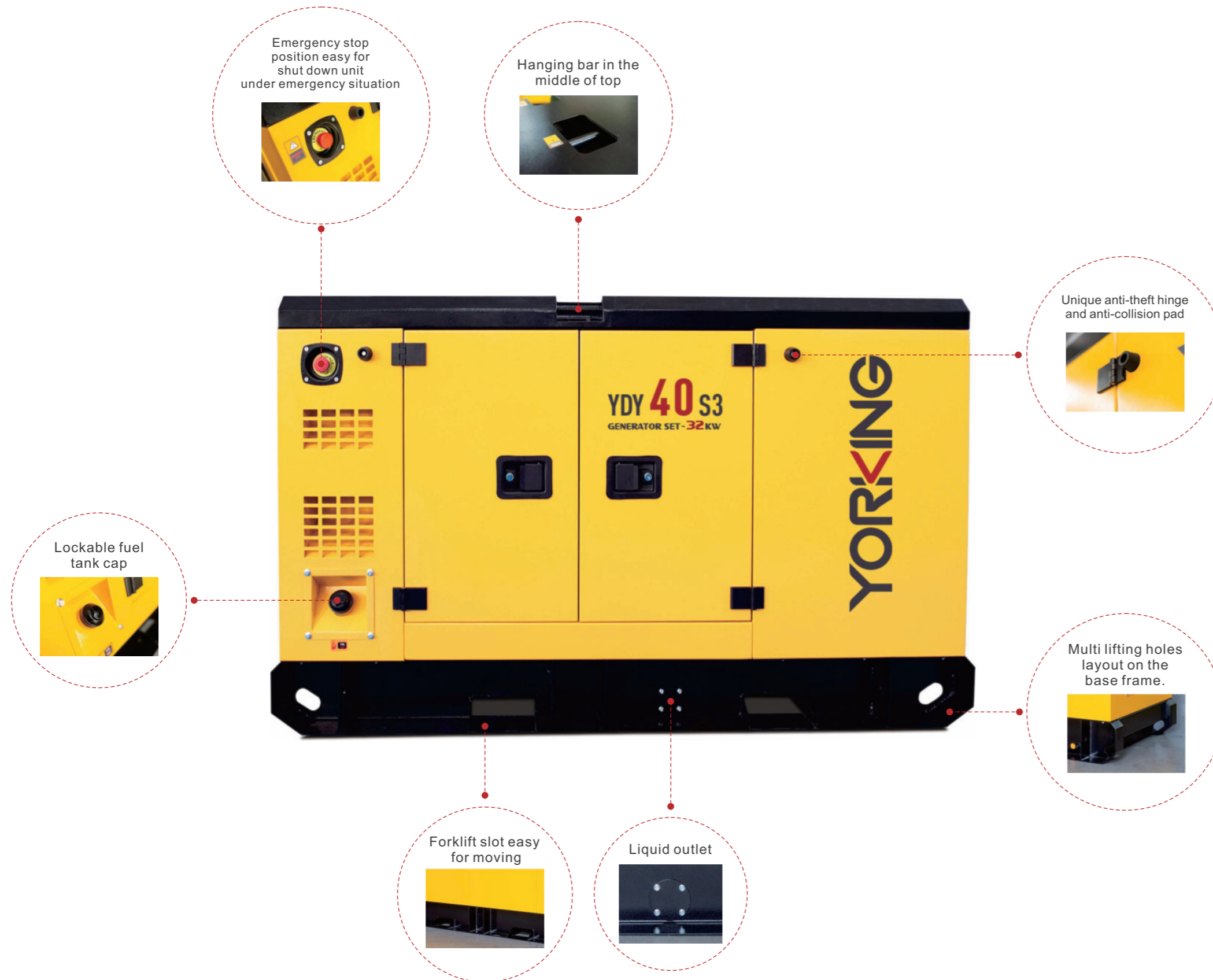
Yorking industry series diesel generator sets are suitable in various situations when the public power is not available, and has been designed, manufactured and tested for a lifetime of service. This series combine maximum choice with exceptional reliability and performance. From primary to critical backup power needs, these generators are designed for optimal performance in the most demanding conditions and all applications, from data centers and healthcare to manufacturing, utilities and retail.

Thanks to its versatility and user-friendliness, it can be easily integrated into all your projects.

Designed and built to the very high standards, Yorking industry series gensets carry out extreme testing for both components and for the assembled units – resulting in exceptional reliability.

Based on various application demand, we provide many options to meet customer's specific demand. Meanwhile, we do design specific power solutions.





Super Compact Series designed to save your space and cost



70dBA

Dependable and Efficient Jobsite Power



ULTRA SILENT
53dBA

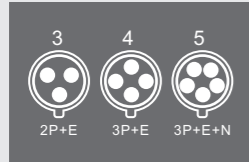
Ultra Silent Series bring you more joyful experience with low noise

CONFIGURATION AND FEATURES

1 Multi Power output design



Each socket is protected by independent circuit breaker with high IP level.



Besides copper output terminals, either single phase or three phase power can output from different sockets combination (optional only).

CEE 16A to 125A sockets ensure you get the max power from the genset.

2 Utility battery charger



The utility battery charger is provided in ATS. It can also be installed inside generator.

3 Easy and safe control system



Fuel gauge easy for monitoring fuel capacity. Circuit breaker provide full protection of operator.



Digital controller features multi functions and languages. All operations can be performed with one controller.



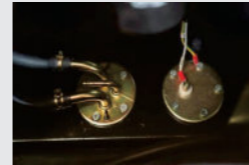
Emergency Stop Knob can stop the genset under emergency situation.

4 Controller



The client's application might require from a genset being started and stopped manually all the way to paralleling solutions with sophisticated control scenarios. Therefore, we offer flexible controller options like Deepsea DSE6020, DSE7320, ComAp AMF8, Smartgen HGM6120, etc.

5 Environment-friendly base frame design



To keep long time running, we adopt day time running capacity skid type fuel tank and optional large tank.

The base frame design ensure the leaked liquid will be stored in the base, rather than leaked to the soil directly.

The standard electronic fuel sensor ensure the operator will see the real time fuel capacity from the control panel.

6 User friendly and security design



Hot and moving parts are fully isolated.



Battery switch greatly reduce the power loss while the genset is under storage.

7 Reliable performance under different ambient environment



Oil/water separator is much helpful for extending engine life.



Water-proof cap of exhaust pipe prevent water flowing into the pipe.

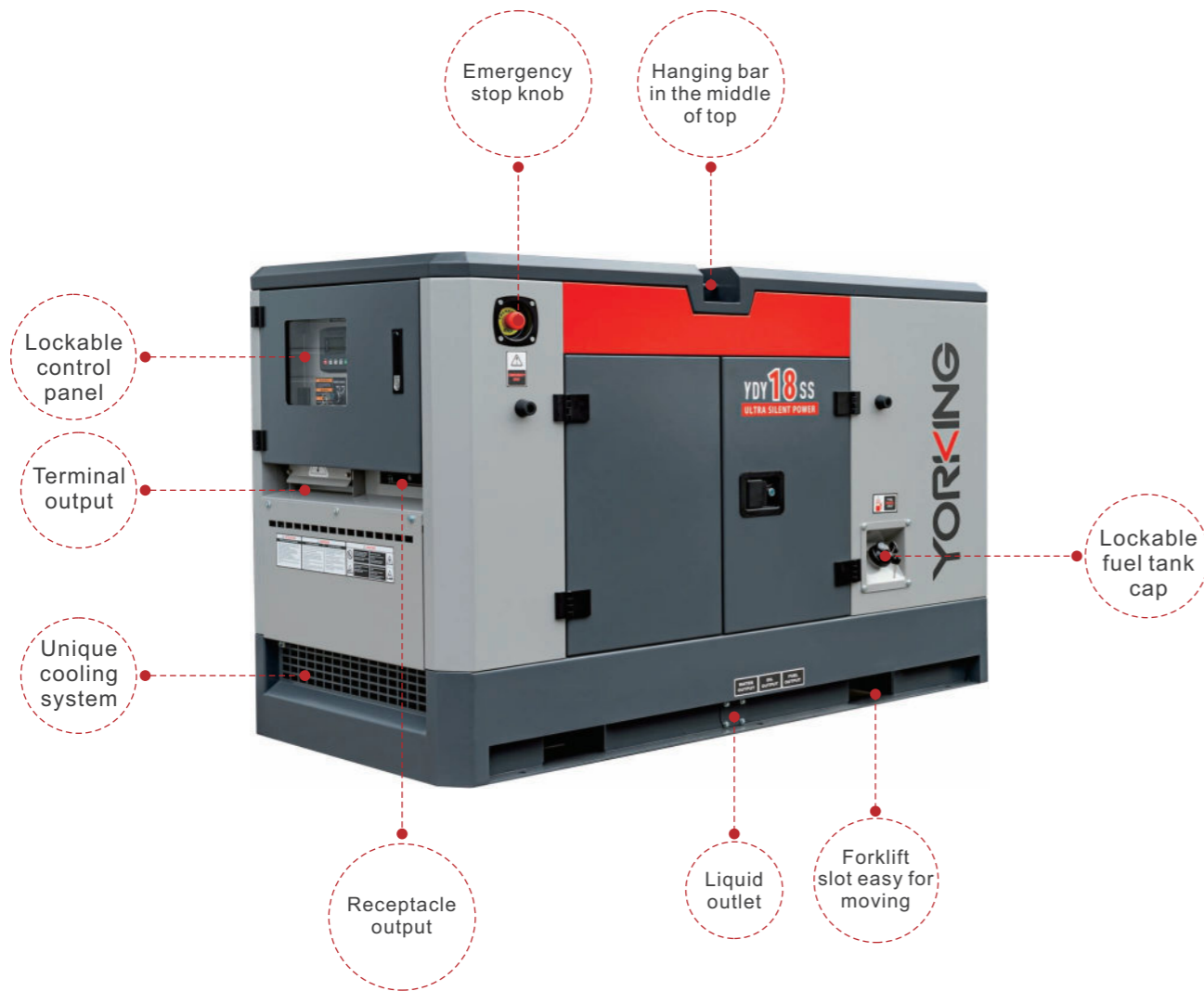


Water jacket or other preheat devices are optional for cold area. Expansion tank is helpful for cooling system.

Ultra Silent Generator Set-Industry Line

Yorking launched the new ultra silent genset in 2022, which noise is only 51dBA@7m. It's just as whispering while you stand close to it without disturbing you at all.

Yorking achieved such low noise level thanks to below sides:



1 Double service door greatly absorb the engine noise.



2 Unique internal air circulation design reduced the air flowing noise.



3 Residential level muffler significantly reduced the engine noise.



4 The electronic fan further blocked engine noise spreading to the radiator.



To keep long time running, we adopt 8-11 hours running base fuel tank and optional large tank. The base frame design ensure the leaked liquid stored in the base, rather than leaked to the soil directly.



The fuel-water separator is standard configuration to ensure long service life of engine. The standard electronic fuel sensor ensure the operator will see the real time fuel capacity from the control panel.



Battery switch ensures battery capacity while the unit is not running.



User friendly control system with controller, fuel gauge, main breaker, terminal output and socket output.



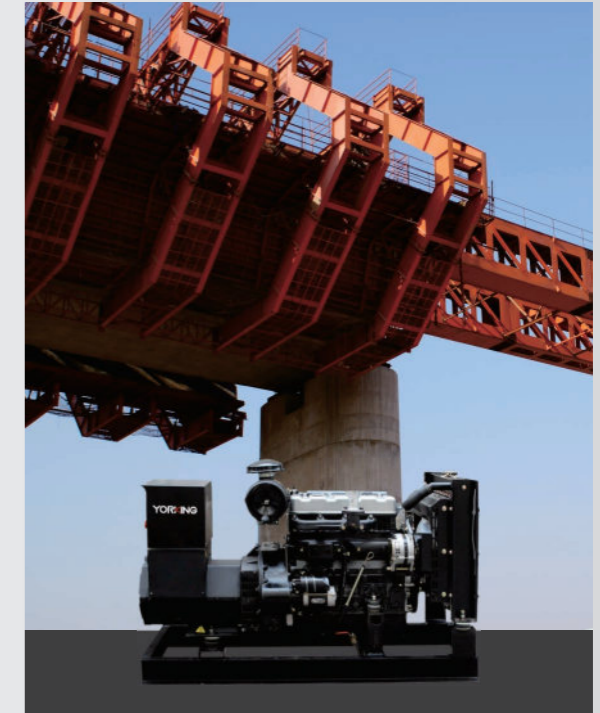
Emergency stop knob ensure the genset will be shut down immediately in case emergency situation.



Lockable fuel tank cap ensure security



Optional heater ensure genset will start smoothly in cold weather.



Engine

Engine is the heart of generator set, we only apply quality engine that are noted for safe, reliable, and high powered performance capabilities to create first-class equipment.

We have two optional lines of engine: Chinese brand engine such as YTO, SDEC, FAW, YUCHAI etc, and overseas brand engine such as Mitsubishi, Doosan, Volvo, Cummins and Perkins etc. Each brand engine features unique advantage.

Backed by these well-know brands, Yorking can offer comprehensive power solutions either for general operation or harsh applications.

Alternator

Standards metted: ISO8528-3, ISO9001,BS5000 Part3, NEMA MG1-32,IEC34-1

Standard2/3 pitch winding design:

*Eliminate the triple frequency harmonics on the voltage waveform, which is the well suitable for uninterruptible power supply of non-linear load.

*Restrain excessive current in the neutral current while connected to the grid.

*Well-chosen pole and tooth ensure very low waveform distortion of output voltage.

THF is less than 2% and TIF is less than 50.

Rotors are dynamically balance to be lower than the minimum vibration in BS6861:Part 1 Grade2.5

Standarded protection level is IP22 or Ip23.

Control System

Yorking industry gensets apply intelligent control system to monitor an extensive number of engine parameters and display warnings, shutdown and engine status information on the back-lit LCD screen, illuminated LEDs and remote PC.

The controller integrate digitization, intelligentization and network technology that are used for genset automation and monitor control system of single or multiple units to achieve automatic start/stop, data measurement, alarm protection and etc. functions.

The controller brand is optional with Deepsea, Smartgen or ComAp etc according to your demand and preference.

Yorking Auto Transfer Switches provide generator sets with monitoring, starting and loading transferring functions for emergency, standby and optional standby applications.

The ATS is optional with AMF and surge protector, and the quality contact switch ranges from 63A up to 1600A. The canopy can be wall mounting type or floor stand type varying with the current and specific demand.

Model			Prime		Standby		Alternator	Diesel Engine	Control	Dimension(LxWxH)(mm)				Battery	Model			Prime		Standby		Alternator	
Open type Silent type	Compact type	Ultra silent type	kVA	kW	kVA	kW				Open type	Silent type	Compact type	Ultra silent type		Open type Silent type	Compact type	Ultra silent type	kVA	kW	kVA	kW		
Single phase																Single phase							
YDY8E/S	YDY8S-E	YDY8SS	7	7	8	8	Y164B/1P	YD380D	M	1350*740*1020	1660*850*1150	1450*790*1050	1600*780*1100	60Ah	YDY9E/S	YDY9S-E	YDY9SS	8	8	9	9	Y164B/1P	
YDY10E/S	YDY10S-E	YDY10SS	8	8	9	9	Y164C/1P	YD385D	M	1350*740*1020	1660*850*1150	1450*790*1050	1600*780*1100	60Ah	YDY11E/S	YDY11S-E	YDY11SS	10	10	11	11	Y164C/1P	
YDY12E/S	YDY12S-E	YDY12SS	10	10	11	11	Y164D/1P	YD480D	M	1350*740*1020	1760*850*1150	1450*790*1050	1600*780*1100	60Ah	YDY13E/S	YDY13S-E	YDY13SS	12	12	13	13	Y164D/1P	
YDY15E/S	YDY15S-E	YDY15SS	13	13	15	15	Y164D-T/1P	YND485D	M	1350*740*1020	1760*850*1150	1450*790*1050	1600*780*1100	60Ah	YDY16E/S	YDY16S-E	YDY16SS	14	14	16	16	Y184E/1P	
YDY18E/S	YDY18S-E	YDY18SS	16	16	18	18	Y184E/1P	YSD490D	M	1500*780*1050	1890*900*1150	1600*840*1100	1720*820*1150	60Ah	YDY23E/S	YDY23S-E	YDY23SS	20	20	22	22	Y184FS-T/1P	
YDY22E/S	YDY22S-E	YDY22SS	20	20	22	22	Y184FS-T/1P	Y495D	M	1500*780*1050	1890*900*1150	1600*840*1100	1720*820*1150	60Ah	YDY25E/S	YDY25S-E	YDY25SS	22	22	24	24	Y184G/1P	
YDY28E/S	YDY28S-E	YDY28SS	24	24	26	26	Y184H/1P	Y4100D	M	1680*780*1050	2218*930*1150	1820*860*1100	2000*850*1150	80Ah	YDY30E/S	YDY30S-E	YDY30SS	28	28	30	30	Y184H/1P	
Three phase																Three phase							
YDY10E3/S3	YDY10S3-E	YDY10SS3	10	8	11	9	Y164B	YD380D	M	1350*740*1020	1660*850*1150	1450*790*1050	1600*780*1100	60Ah	YDY11E3/S3	YDY11S3-E	YDY11SS3	10	8	11	8.8	Y164A	
YDY12E3/S3	YDY12S3-E	YDY12SS3	11	8.8	12	10	Y164B	YD385D	M	1350*740*1020	1660*850*1150	1450*790*1050	1600*780*1100	60Ah	YDY14E3/S3	YDY14S3-E	YDY14SS3	12	10	14	11	Y164B	
YDY15E3/S3	YDY15S3-E	YDY15SS3	13	10	15	12	Y164C	YD480D	M	1350*740*1020	1760*850*1150	1450*790*1050	1600*780*1100	60Ah	YDY17E3/S3	YDY17S3-E	YDY17SS3	15	12	17	13	Y164C	
YDY18E3/S3	YDY18S3-E	YDY18SS3	16	13	18	14	Y164D	YND485D	M	1350*740*1020	1760*850*1150	1450*790*1050	1600*780*1100	60Ah	YDY23E3/S3	YDY23S3-E	YDY23SS3	20	16	22	18	Y164D	
YDY22E3/S3	YDY22S3-E	YDY22SS3	20	16	22	18	Y184ES	YSD490D	M	1500*780*1050	1890*900*1150	1600*840*1100	1720*820*1150	60Ah	YDY29E3/S3	YDY29S3-E	YDY29SS3	25	20	28	22	Y184ES	
YDY28E3/S3	YDY28S3-E	YDY28SS3	25	20	28	22	Y184FS	Y495D	M	1500*780*1050	1890*900*1150	1600*840*1100	1720*820*1150	60Ah	YDY34E3/S3	YDY34S3-E	YDY34SS3	30	24	33	26	Y184FS	
YDY33E3/S3	YDY33S3-E	YDY33SS3	30	24	33	26	Y184G	Y4100D	M	1550*780*1050	2118*930*1150	1820*860*1100	2000*850*1150	60Ah	YDY39E3/S3	YDY39S3-E	YDY39SS3	34	28	39	31	Y184G	
YDY35E3/S3	YDY35S3-E	YDY35SS3	32	26	35	29	Y184G	Y4102D	M	1550*780*1050	2118*930*1150	1820*860*1100	2000*850*1150	80Ah	YDY41E3/S3	YDY41S3-E	YDY41SS3	37	30	41	33	Y184G	
YDY40E3/S3	YDY40S3-E	YDY40SS3	37	30	41	33	Y184H	Y4105D	M	1680*780*1050	2218*930*1150	1820*860*1100	2000*850*1150	80Ah	YDY50E3/S3	YDY50S3-E	YDY50SS3	45	36	50	40	Y184H	
YDY47E3/S3	YDY47S3-E	YDY47SS3	42	34	46	37	Y224C	Y4110D	M	1870*850*1160	2420*1050*1200	2200*970*1360	2350*970*1350	2*80Ah	YDY54E3/S3	YDY54S3-E	YDY54SS3	49	39	54	43	Y184J	
YDY53E3/S3	YDY53S3-E	YDY53SS3	48	38	53	42	Y224D	Y4102ZLD	M	1870*850*1160	2520*1050*1200	2200*970*1360	2350*970*1350	2*80Ah	YDY60E3/S3	YDY60S3-E	YDY60SS3	54	43	59	47	Y224C	
YDY61E3/S3	YDY61S3-E	YDY61SS3	55	44	61	49	Y224E	Y4105ZLD	E	1960*850*1160	2520*1050*1200	2200*970*1360	2350*970*1350	2*80Ah	YDY66E3/S3	YDY66S3-E	YDY66SS3	60	48	66	53	Y224D	
YDY70E3/S3	YDY70S3-E	YDY70SS3	62	50	70	56	Y224EL	YD4EZLD	E	1960*850*1160	2520*1050*1200	2200*970*1360	2350*970*1350	2*80Ah	YDY77E3/S3	YDY77S3-E	YDY77SS3	70	56	77	62	Y224E	
YDY89E3/S3	YDY89S3-E	YDY89SS3	80	64	89	71	Y224G	Y4110ZLD	E	1960*850*1300	2520*1050*1390	2200*970*1360	2350*970*1350	2*80Ah	YDY97E3/S3	YDY97S3-E	YDY97SS3	87	70	97	78	Y224F	
YDY100E3/S3		YDY100SS3	90	72	100	80	Y274C	YD4GZLD	E	1960*950*1300	2520*1150*1440	2200*1050*1400	2450*1070*1350	2*80Ah	YDY110E3/S3			100	80	110	88	Y224G	
YDY123E3/S3			112	90	123	99	Y274D	LR4M3L-D91F-U2	E	2050*950*1400	2660*1130*1520			2*80Ah	YDY139E3/S3			125	100	138	110	Y274C	
YDY138E3/S3			125	100	138	110	Y274DL	LR4M3L-D88EF-U2	E	2050*950*1400	2660*1130*1520			2*80Ah	YDY148E3/S3			135	108	148	118	Y274D	
YDY165E3/S3			150	120	165	132	Y274EL	LR6A3L-D88EF-U2	E	2600*950*1650	3100*1100*1700			2*80Ah	YDY183E3/S3			165	132	182	145	Y274E	
YDY182E3/S3			165	132	182	145	Y274G	LR6M3L-D88EF-U2	E	2600*950*1650	3100*1100*1700			2*80Ah	YDY200E3/S3			180	144	200	160	Y274EL	
YDY220E3/S3			200	160	220	176	Y274H	YM6H4L-D88EF-U2	E	2900*1400*1750	3900*1470*2020			2*120Ah	YDY242E3/S3			220	176	242	194	Y274HS	
YDY248E3/S3			225	180	248	198	Y274J	YM6H4LF-D88EF-U2	E	2900*1400*1750	3900*1470*2020			2*120Ah	YDY276E3/S3			250	200	275	220	Y274J	
YDY275E3/S3			250	200	275	220	Y274K	YM6S4L-D88EF-U2	E	2900*1400*1750	3900*1470*2020			2*120Ah	YDY304E3/S3			275	220	303	242	Y274J	
YDY303E3/S3			275	220	303	242	Y444D	YM6S4LF-D88EF-U2	E	3200x1400x1850	4300*1500*2050			2*120Ah	YDY330E3/S3			300	240	330	264	Y274K	
YDY343E3/S3			312	250	343	275	YK444D	YM6S9L-D119EF-U2	E	3200x1400x1850	4300*1500*2050			2*150Ah	YDY380E3/S3			345	276	380	304	Y444D	
YDY385E3/S3			350	280	385	308	YK444E	YM6S9L-D119BEF-U2	E	3200x1400x1850	4300*1500*2050			2*150Ah	YDY414E3/S3			375	300	413	330	YK444D	
YDY413E3/S3			375	300	413	330	Y444F	YM6S9LF-D119EF-U2	E	3200x1400x1850	4300*1500*2050			2*150Ah	YDY441E3/S3			400	320	440	352	YK444E	
YDY440E3/S3			400	320	440	352	YK444F	YM6S9LF-D119AEF-U2	E	3200x1400x1850	4300*1500*2050			2*150Ah	YDY480E3/S3			437	350	480	385	Y444F	

Model	Prime		Standby		Continuous		Engine	Control	Air Valve	Alternator	Dimension(LxWxH) (mm)		Battery
	kVA	kW	kVA	kW	kVA	kW					Silent	Open frame	
Single-phase													
YDSD8E/S	8	8	9	9	6	6	3Z1.1-G42	CR	2	Y164C/1P	1600*850*1150	1250*740*1020	60AH
YDSD11E/S	10	10	11	11	8	8	3Z1.1-G41	CR	2	Y162E/1P	1600*850*1150	1250*740*1020	60AH
YDSD13E/S	12	12	13	13	9	9	4Z2.3-G11	M	2	Y164D/1P	1800*850*1150	1350*740*1050	60AH
YDSD13E/S	12	12	13	13	9	9	4Z2.3-G21	E	2	Y164D/1P	1800*850*1150	1350*740*1050	60AH
YDSD18E/S	16	16	18	18	12	12	4Z2.7-G11	M	2	Y184E/1P	1930*900*1150	1400*740*1140	60AH
YDSD18E/S	16	16	18	18	12	12	4Z2.7-G21	E	2	Y184E/1P	1930*900*1150	1400*740*1140	60AH
YDSD22E/S	20	20	22	22	15	15	4Z3.0-G11	M	2	Y184FS-T/1P	2058*930*1150	1500*780*1200	60AH
YDSD22E/S	20	20	22	22	15	15	4Z3.0-G21	E	2	Y184FS-T/1P	2058*930*1150	1500*780*1200	60AH
YDSD28E/S	25	25	28	28	19	19	4Z3.2-G11	M	2	Y184H/1P	2140*930*1150	1600*780*1200	80AH
YDSD28E/S	25	25	28	28	19	19	4Z3.2-G21	E	2	Y184H/1P	2140*930*1150	1600*780*1200	80AH
Three-phase													
YDSD11E3/S3	10	8	11	9	8	6	3Z1.1-G42	CR	2	Y164B	1600*850*1150	1250*740*1020	60AH
YDSD13E3/S3	12	10	13	11	9	8	3Z1.1-G41	CR	2	Y162D	1600*850*1150	1250*740*1020	60AH
YDSD17E3/S3	15	12	16	13	11	9	4Z2.3-G11	M	2	Y164D	1800*850*1150	1350*740*1050	60AH
YDSD17E3/S3	15	12	16	13	11	9	4Z2.3-G21	E	2	Y164D	1800*850*1150	1350*740*1050	60AH
YDSD23E3/S3	20	16	23	18	15	12	4Z2.7-G11	M	2	Y184ES	1930*900*1150	1400*740*1140	60AH
YDSD23E3/S3	20	16	23	18	15	12	4Z2.7-G21	E	2	Y184ES	1930*900*1150	1400*740*1140	60AH
YDSD28E3/S3	25	20	28	22	19	15	4Z3.0-G11	M	2	Y184FS	2058*930*1150	1500*780*1200	60AH
YDSD28E3/S3	25	20	28	22	19	15	4Z3.0-G21	E	2	Y184FS	2058*930*1150	1500*780*1200	60AH
YDSD34E3/S3	31	25	34	28	23	19	4Z3.2-G11	M	2	Y184G	2058*930*1150	1500*780*1200	80AH
YDSD34E3/S3	31	25	34	28	23	19	4Z3.2-G21	E	2	Y184G	2058*930*1150	1500*780*1200	80AH
YDSD44E3/S3	40	32	44	35	30	24	4ZT3.2-G11	M	2	Y184J	2140*930*1200	1600*780*1200	80AH
YDSD44E3/S3	40	32	44	35	30	24	4ZT3.2-G21	E	2	Y184J	2140*930*1200	1600*780*1200	80AH
YDSD55E3/S3	50	40	55	44	38	30	4ZT3.5-G21	E	2	Y224D	2300*1050*1300	1710*830*1250	80AH
YDSD70E3/S3	63	50	69	55	47	38	4ZT4.1-G21	E	2	Y224EL	2440*1050*1360	1910*900*1350	100AH
YDSD75E3/S3	68	55	75	60	51	41	4ZTAA4.1-G21	E	2	Y224F	2440*1050*1360	1910*900*1350	100AH
YDSD88E3/S3	80	64	88	70	60	48	4ZTAA4.1-G31	EUP	2	Y224G	2440*1050*1360	1910*900*1350	100AH
YDSD55E3/S3-FS	50	40	55	44	40	32	4HT4.3-G21	E	4	Y224D	2420*1050*1440	1900*900*1200	2*80Ah
YDSD55E3/S3-III	50	40	55	44	40	32	4HTAA4.3-G31	CR	4	Y224D	2420*1050*1440	1900*900*1200	2*80Ah

Model	Prime		Standby		Continuous		Engine	Control	Air Valve	Alternator	Dimension(LxWxH) (mm)		Battery
	kVA	kW	kVA	kW	kVA	kW					Silent	Open frame	
Single-phase													
YDSD69E3/S3	63	50	69	55	50	40	SC4H95D2	E	4	Y224EL	2520*1050*1440	1960*900*1200	2*80Ah
YDSD69E3/S3-FS	63	50	69	55	50	40	4HT4.3-G22	E	4	Y224EL	2520*1050*1440	1960*900*1200	2*80Ah
YDSD69E3/S3-III	63	50	69	55	50	40	4HTAA4.3-G32	CR	4	Y224EL	2520*1050*1440	1960*900*1200	2*80Ah
YDSD88E3/S3	80	64	88	70	64	51	SC4H115D2	E	4	Y224G	2520*1050*1440	2000*900*1200	2*80Ah
YDSD88E3/S3-FS	80	64	88	70	64	51	4HT4.3-G23	E	4	Y224G	2520*1050*1440	2000*900*1200	2*80Ah
YDSD88E3/S3-III	80	64	88	70	64	51	4HTAA4.3-G33	E	4	Y224G	2520*1050*1440	2000*900*1200	2*80Ah
YDSD110E3/S3	100	80	110	88	80	64	SC4H140D2	E	4	Y274C	2590*1100*1550	2000*950*1400	2*80Ah
YDSD110E3/S3-FS	100	80	110	88	80	64	4HTAA4.3-G21	E	4	Y274C	2590*1100*1550	2000*950*1400	2*80Ah
YDSD110E3/S3-III	100	80	110	88	80	64	4HTAA4.3-G34	CR	4	Y274C	2590*1100*1550	2000*950*1400	2*80Ah
YDSD125E3/S3	113	90	125	100	90	72	SC4H160D2	E	4	Y274D	2590*1100*1550	2000*950*1250	2*80Ah
YDSD125E3/S3-FS	113	90	125	100	90	72	4HTAA4.3-G23	E	4	Y274D	2590*1100*1550	2000*950*1250	2*80Ah
YDSD125E3/S3-III	113	90	125	100	90	72	4HTAA4.3-G35	CR	4	Y274D	2590*1100*1550	2000*950*1250	2*80Ah
YDSD138E3/S3	125	100	138	110	100	80	SC4H180D2	E	4	Y274DL	2590*1100*1550	2000*950*1250	2*80Ah
YDSD138E3/S3-FS	125	100	138	110	100	80	4HTAA4.3-G22	E	4	Y274DL	2590*1100*1550	2000*950*1250	2*80Ah
YDSD150E3/S3-III	137	110	150	120	110	88	4HTAA4.3-G36	CR	4	Y274E	2750*1130*1550	2150*950*1300	2*80Ah
YDSD150E3/S3-FS	137	110	150	120	110	88	6HTAA6.5-G21	E	4	Y274E	2960*1130*1650	2420*950*1400	2*80Ah
YDSD165E3/S3	150	120	165	132	120	96	SC7H205D2	E	4	Y274EL	2960*1130*1650	2420*950*1400	2*80Ah
YDSD165E3/S3-FS	150	120	165	132	120	96	6HTAA6.5-G22	E	4	Y274EL	2960*1130*1650	2420*950*1400	2*80Ah
YDSD165E3/S3-III	150	120	165	132	120	96	6HTAA6.5-G32	CR	4	Y274EL	2960*1130*1650	2420*950*1400	2*80Ah
YDSD175E3/S3	163	130	175	140	130	104	SC7H220D2	E	4	Y274G	3060*1150*1700	2420*950*1400	2*80Ah
YDSD188E3/S3	168	135	185	149	134	108	SC7H230D2	E	4	Y274G	3060*1150*1700	2420*950*1400	2*80Ah
YDSD188E3/S3-III	168	135	185	149	134	108	6HTAA6.5-G35	E	4	Y274G	3060*1150*1700	2420*950*1400	2*80Ah/2*120A
YDSD206E3/S3	188	150	206	165	150	120	SC7H250D2	E	4	Y274HS	3150*1150*1750	2420*950*1400	2*80Ah
YDSD206E3/S3-III	188	150	206	165	150	120	6HTAA6.5-G33	CR	4	Y274HS	3150*1150*1750	2420*950*1400	2*80Ah
YDSD206E3/S3-FS	188	150	206	165	150	120	6HTAA6.5-G23	E	4	Y274HS	3150*1150*1750	2420*950*1400	2*80Ah
YDSD225E3/S3	200	160	225	180	160	128	SC8D280D2	E	2	Y274H	3650*1220*1950	2600*1000*1650	2*120Ah/2*150A
YDSD225E3/S3-III	200	160	225	180	160	128	6HTAA6.5-G34	CR	4	Y274H	3650*1220*1950	2600*1000*1650	2*120Ah
YDSD225E3/S3-FS	200	160	225	180	160	128	6DTAA8.9-G21	E	2	Y274H	3650*1220*1950	2600*1000*1650	2*120Ah

Model	Prime		Standby		Continuous		Engine	Control	Air Valve	Alternator	Dimension(LxWxH) (mm)		Battery
	kVA	kW	kVA	kW	kVA	kW					Silent	Open frame	
Three-phase													
YDSD250E3/S3	225	180	250	200	180	144	SC9D310D2	E	2	Y274J	3750*1320*2000	2700*1050*1650	2*120Ah
YDSD250E3/S3-FS	225	180	250	200	180	144	6DTAA8.9-G24	E	2	Y274J	3750*1320*2000	2700*1050*1650	2*120Ah
YDSD250E3/S3-III	225	180	250	200	180	144	6DTAA8.9-G32	CR	2	Y274J	3750*1320*2000	2700*1050*1650	2*120Ah
YDSD275E3/S3	250	200	275	220	200	160	SC9D340D2	E	4	Y274K	3750*1350*2000	2700*1050*1650	2*120Ah
YDSD275E3/S3-FS	250	200	275	220	200	160	6DTAA8.9-G23	E	4	Y274K	3750*1350*2000	2700*1050*1650	2*120Ah
YDSD275E3/S3-III	250	200	275	220	200	160	6DTAA8.9-G33	CR	4	Y274K	3750*1350*2000	2700*1050*1650	2*120Ah
YDSD313E3/S3	275	220	313	250	220	176	SC10E380D2	E	4	Y444D	3900*1450*2020	3000*1100*1700	2*120Ah
YDSD313E3/S3-III	275	220	313	250	220	176	6DTAA8.9-G34	CR	4	Y444D	3900*1450*2020	3000*1100*1700	2*120Ah
YDSD350E3/S3	313	250	350	280	250	200	SC12E420D2	E	4	YK444D	4040*1480*2050	3100*1100*1700	2*150Ah
YDSD350E3/S3-III	313	250	350	280	250	200	6ETAA11.8-G32	CR	4	YK444D	4040*1480*2050	3100*1100*1700	2*150Ah
YDSD375E3/S3	350	280	375	300	280	224	SC12E460D2	E	4	YK444E	4040*1480*2050	3100*1100*1700	2*150Ah
YDSD375E3/S3-FS	350	280	375	300	280	224	6ETAA11.8-G21	E	4	YK444E	4040*1480*2050	3100*1100*1700	2*150Ah
YDSD375E3/S3-III	350	280	375	300	280	224	6ETAA11.8-G33	CR	4	YK444E	4040*1480*2050	3100*1100*1700	2*150Ah
YDSD400E3/S3	362	290	400	320	290	232	SC12E480D2	CR	4	Y444F	4120*1500*2080	3200*1350*1800	2*150Ah
YDSD413E3/S3	375	300	413	330	300	240	SC13E500D2	CR	4	Y444F	4120*1500*2080	3200*1350*1800	2*150Ah
YDSD413E3/S3-III	375	300	413	330	300	240	6ETAA11.8-G31	CR	4	Y444F	4120*1500*2080	3200*1350*1800	2*150Ah
YDSD450E3/S3	412	330	450	360	330	264	SC13E550D2	CR	4	Y544C	3800*1600*2200	3350*1400*1950	2*200Ah
YDSD440E3/S3-III	400	320	437	350	320	256	6ETAA12.8-G32	CR	4	YK444F	4140*1550*2120	3200*1350*1800	2*180Ah
YDSD480E3/S3-III	437	350	480	385	350	280	6ETAA12.8-G31	CR	4	Y544C	3800*1600*2200	3350*1400*1950	2*200Ah
YDSD550E3/S3-III	500	400	550	440	400	320	6ETAA12.8-G310	E	4	Y544D	3800*1600*2200	3700*1650*2180	2*200Ah
YDSD563E3/S3-III	500	400	563	450	400	320	6KTAA25-G311	EUP	4	Y544D	3800*1600*2200	3700*1650*2180	2*200Ah
YDSD563E3/S3-III	500	400	563	450	400	320	6KTAA25-G36	CR	4	Y544D	3800*1600*2200	3700*1650*2180	2*200Ah
YDSD625E3/S3-III	563	450	625	500	450	360	6KTAA25-G310	EUP	4	Y544DL	4550*1850*2450	3950*1650*2180	2*200Ah
YDSD625E3/S3-III	563	450	625	500	450	360	6KTAA25-G35	CR	4	Y544DL	4550*1850*2450	3950*1650*2180	2*200Ah
YDSD688E3/S3-III	625	500	688	550	500	400	6KTAA25-G39	EUP	4	Y544FS	ISO 20'ft GP	4100*1700*2250	2*200Ah
YDSD688E3/S3-III	625	500	688	550	500	400	6KTAA25-G34	CR	4	Y544FS	ISO 20'ft GP	4100*1700*2250	2*200Ah
YDSD750E3/S3-III	688	560	750	600	550	448	6KTAA25-G38	EUP	4	Y634B	ISO 20'ft GP	4350*1700*2300	2*200Ah
YDSD750E3/S3-III	688	560	750	600	550	448	6KTAA25-G33	CR	4	Y634B	ISO 20'ft GP	4350*1700*2300	2*200Ah
YDSD825E3/S3-III	750	600	825	660	600	480	6KTAA25-G32	CR	4	Y634B	ISO 20'ft GP	4550*1750*2350	2*200Ah
YDSD900E3/S3-III	825	660	900	720	660	528	6KTAA25-G31	CR	4	Y634D	ISO 20'ft GP	4550*1750*2350	2*200Ah

Model	Prime		Standby		Continuous		Engine	Control	Air Valve	Alternator	Dimension(LxWxH) (mm)		Battery
	kVA	kW	kVA	kW	kVA	kW					Silent	Open frame	
Single phase													
YDSD19E/S	16	16	18	18	12	12	4Z2.3-G12	M	2	Y184E/1P	1930*900*1150	1400*740*1140	60AH
YDSD23E/S	20	20	22	22	15	15	4Z2.7-G12	M	2	Y184FS-T/1P	1930*900*1150	1400*740*1140	60AH
YDSD26E/S	24	24	26	26	18	18	4Z3.0-G12	M	2	FLD184G/1P	1930*900*1150	1500*780*1200	60AH
Three phase													
YDSD24E3/S3	20	16	23	18	15	12	4Z2.3-G12	M	2	Y164D	1800*850*1150	1350*740*1050	60AH
YDSD29E3/S3	25	20	28	22	19	15	4Z2.7-G12	M	2	Y184ES	1930*900*1150	1400*740*1140	60AH
YDSD33E3/S3	30	24	33	26	23	18	4Z3.0-G12	M	2	Y184FS	2058*930*1150	1400*740*1140	60AH
YDSD45E3/S3	40	32	44	35	30	24	4Z3.2-G12	M	2	Y184H	2140*930*1200	1600*780*1200	80AH
YDSD48E3/S3	44	35	48	39	33	26	4ZT3.2-G12	M	2	Y184H	2140*930*1200	1600*780*1200	80AH
YDSD70E3/S3	63	50	70	56	50	40	4HT4.3-G21	E	4	F224D	2420*1050*1440	1900*900*1200	2*80Ah
YDSD80E3/S3	70	56	80	64	56	45	4HT4.3-G22	E	4	Y224E	2520*1050*1440	1960*900*1200	2*80Ah
YDSD100E3/S3	90	72	100	80	72	58	4HT4.3-G23	E	4	F224G	2520*1050*1440	2000*900*1200	2*80Ah
YDSD126E3/S3	115	92	125	100	92	74	4HTAA4.3-G21	E	4	Y274C	2590*1100*1550	2000*950*1250	2*80Ah
YDSD140E3/S3	125	100	140	112	100	80	4HTAA4.3-G23	E	4	Y274C	2590*1100*1550	2000*950*1250	2*80Ah
YDSD165E3/S3	150	120	165	132	120	96	6HTAA6.5-G21	E	4	Y274DL	2960*1130*1650	2420*950*1400	2*80Ah
YDSD180E3/S3	165	132	180	144	132	106	6HTAA6.5-G22	E	4	Y274E	2960*1130*1650	2420*950*1400	2*80Ah
YDSD220E3/S3	200	160	220	176	160	128	6HTAA6.5-G23	E	4	Y274G	3060*1150*1700	2420*950*1400	2*80Ah
YDSD250E3/S3	225	180	250	200	180	144	6DTAA8.9-G21	E	2	Y274HS	3650*1220*1950	2600*1000*1650	2*80Ah
YDSD275E3/S3	250	200	275	220	200	160	6DTAA8.9-G24	E	2	Y274J	3750*1320*2000	2700*1050*1650	2*120Ah
YDSD313E3/S3	275	220	313	250	220	176	6DTAA8.9-G23	E	2	Y274J	3750*1320*2000	2700*1050*1650	2*120Ah
YDSD375E3/S3	350	280	375	300	280	224	6ETAA11.8-G21	E	4	Y444D	4040*1480*2050	3100x1100x1700	2*150Ah
YDSD412E3/S3	375	300	412	330	300	240	6ETAA12.8-G22	E	4	Y444D	4120*1500*2080	3200*1350*1800	2*180Ah
YDSD437E3/S3	400	320	437	350	320	256	6ETAA12.8-G21	E	4	YDK444E	4120*1500*2080	3200*1350*1800	2*180Ah
YDSD500E3/S3	450	360	500	400	360	288	6ETAA12.8-G32	E	4	Y444F	4140*1550*2120	3200*1350*1800	2*180Ah
YDSD550E3/S3	500	400	550	440	400	320	6ETAA12.8-G310	E	4	YDK444F	4140*1550*2120	3200*1350*1800	2*180Ah
YDSD625E3/S3	560	450	625	500	448	360	6KTAA25-G311	E	4	Y544C	4550*1850*2450	3950*1650*2180	2*200Ah
YDSD687E3/S3	625	500	687	550	500	400	6KTAA25-G310	E	4	Y544D	4550*1850*2450	3950*1650*2180	2*200Ah
YDSD750E3/S3	700	560	750	600	560	448	6KTAA25-39	E	4	Y544DL	4550*1850*2450	3950*1650*2180	2*200Ah
YDSD825E3/S3	750	600	825	660	600	480	6KTAA25-32.1	E	4	Y544E	ISO 20'ft GP	4100*1700*2250	2*200Ah
YDSD900E3/S3	825	660	900	720	660	528	6KTAA25-31.1	E	4	Y634B	ISO 20'ft GP	4550*1750*2350	2*200Ah

Model	Prime		Standby		Diesel Engine	Control	Alternator	Alternator
	kVA	kW	kVA	kW			Yorking	Leroy Somer
Single phase								
YDBD16S/E	15	15	16	16	4M06G20/5	Elec	FLD184E/1P	TALA40 F-S
YDBD20S/E	18	18	20	20	4M06G25/5	Elec	FLD184F/1P	TALA42 A-S
YDBD28S/E	26	26	28	28	4M06G35/5	Elec	FLD184J/1P	TALA40 E-S
Three phase								
YDBD20S3/E3	18	15	20	16	4M06G20/5	Elec	FLD184ES	TALA40 F
YDBD25S3/E3	23	18	25	20	4M06G25/5	Elec	FLD184E	TALA40 G
YDBD35S3/E3	32	26	35	28	4M06G35/5	Elec	FLD184H	TALA42 E
YDBD44S3/E3	40	32	44	35	4M06G44/5	Elec	FLD184J	TALA42 F
YDBD50S3/E3	45	36	50	40	4M06G50/5	Elec	FLD224D	TALA42 F
YDBD55S3/E3	50	40	55	44	4M06G55/5	ECU	FLD224D	TALA42 G
YDBD72S3/E3	65	52	72	57	4M10G70/5	Elec	FLD224F	TALA44 C
YDBD88S3/E3	80	64	88	70	4M10G88/5	Elec	FLD224G	TALA44 C
YDBD110S3/E3	100	80	110	88	4M10G110/5	Elec	FLD274C	TALA44 D
YDBD150S3/E3	135	108	150	120	6M11G150/5	Elec	FLD274E	TALA44 H
YDBD165S3/E3	150	120	165	132	6M11G165/5	Elec	FLD274ES	TALA44 J
YDBD188S3/E3	162	130	188	150	6M11G188/5	Elec	FLD274G	TALA44 K
YDBD220S3/E3	200	160	220	176	6M16G220/5	Elec	FLD274H	TALA44 M
YDBD250S3/E3	230	184	250	200	6M16G250/5	Elec	FLD274K	TALA46 C
YDBD275S3/E3	250	200	275	220	6M16G275/5	Elec	FLD274K	TALA46 D
YDBD350S3/E3	320	256	350	280	6M16G350/5	Elec	FLD444E	TALA46 G
YDBD385S3/E3	350	280	385	308	6M21G385/5	Elec	FLDK444E	TALA46 H
YDBD440S3/E3	400	320	440	352	6M21G440/5	Elec	FLDK444F	TALA473 A
YDBD500S3/E3	450	360	500	400	6M21G500/5	ECU	FLD544C	TALA473 B
YDBD550S3/E3	500	400	550	440	6M21G550/5	ECU	FLD544D	TALA473 C
YDBD660S3/E3	600	480	660	528	6M33G660/5	Elec	FLD544E	TALA473 E
YDBD715S3/E3	650	520	715	572	6M33G715/5	Elec	FLD544F	TALA473 F
YDBD750S3/E3	680	544	750	600	6M33G750/5	Elec	FLD634B	TALA49 B
YDBD825S3/E3	750	600	825	660	6M33G825/5	ECU	FLD634B	TALA49 B
YDBD900S3/E3	815	652	900	720	12M26G900/5	Elec	FLD634D	TALA49 C
YDBD1000S3/E3	900	720	1000	800	12M26G1000/5	Elec	FLD634D	TALA49 D
YDBD1120S3/E3	1020	816	1120	898	12M26G1100/5	Elec	FLD634F	-
YDBD1250S3/E3	1150	920	1250	1000	12M33G1250/5	Elec	FLD634G	-
YDBD1400S3/E3	1250	1000	1400	1120	12M33G1400/5	Elec	FLD634G	-

Model	Prime		Standby		Diesel Engine	Control	Alternator	Alternator
	kVA	kW	kVA	kW			Yorking	Leroy Somer
Single phase								
YDBD20S/E	18	18	20	20	4M06G20/6	Elec	FLD184E/1P	TALA40 F-S
YDBD25S/E	23	23	25	25	4M06G25/6	Elec	FLD184G/1P	TALA42 A-S
YDBD33S/E	30	30	33	33	4M06G33/6	Elec	FLD184H/1P	TALA42 D-S
Three phase								
YDBD25S3/E3	23	18	25	20	4M06G20/6	Elec	FLD184ES	TALA40 G
YDBD32S3/E3	29	23	32	25	4M06G25/6	Elec	FLD184E	TALA42 C
YDBD42S3/E3	38	30	42	33	4M06G33/6	Elec	FLD184G	TALA42 F
YDBD51S3/E3	47	37	51	41	4M06G41/6	Elec	FLD184H	TALA42 G
YDBD63S3/E3	56	45	63	50	4M06G50/6	Elec	FLD224D	TALA42 H
YDBD69S3/E3	63	50	69	55	4M06G55/6	ECU	FLD224D	TALA44 C
YDBD100S3/E3	94	75	100	80	4M10G83/6	Elec	FLD224G	TALA44 D
YDBD125S3/E3	112	90	125	100	4M10G100/6	Elec	FLD274C	TALA44 E
YDBD138S3/E3	125	100	138	110	6M11G110/6	Elec	FLD274C	TALA44 H
YDBD170S3/E3	150	120	170	135	6M11G135/6	Elec	FLD274DL	TALA44 K
YDBD200S3/E3	181	145	200	160	6M11G160/6	Elec	FLD274ES	TALA44 L
YDBD220S3/E3	200	160	220	176	6M11G176/6	Elec	FLD274G	TALA44 M
YDBD250S3/E3	225	180	250	200	6M16G200/6	Elec	FLD274HS	TALA46 C
YDBD275S3/E3	250	200	275	220	6M16G220/6	Elec	FLD274J	TALA46 E
YDBD313S3/E3	285	227	313	250	6M16G250/6	Elec	FLD274K	TALA46 F
YDBD385S3/E3	350	280	385	308	6M16G308/6	Elec	FLD444D	TALA46 H
YDBD413S3/E3	375	300	413	330	6M21G330/6	Elec	FLD444D	TALA473 A
YDBD488S3/E3	438	350	488	390	6M21G390/6	Elec	FLD444F	TALA473 A
YDBD500S3/E3	455	360	500	400	6M21G400/6	ECU	FLD444F	TALA473 A
YDBD575S3/E3	500	400	575	460	6M21G460/6	ECU	FLDK444F	TALA473 C
YDBD625S3/E3	563	450	625	500	6M26G500/6	Elec	FLD544C	TALA473 D
YDBD719S3/E3	650	520	719	575	6M33G575/6	Elec	FLD544DL	TALA473 F
YDBD750S3/E3	688	550	750	600	6M33G600/6	Elec	FLD544DL	TALA49 B
YDBD791S3/E3	719	575	791	633	6M33G633/6	Elec	FLD544E	TALA49 B
YDBD825S3/E3	750	600	825	660	6M33G660/6	ECU	FLD544E	TALA49 C
YDBD880S3/E3	800	640	880	704	12M26G704/6	Elec	FLD544F	TALA49 C
YDBD1000S3/E3	900	720	1000	800	12M26G800/6	Elec	FLD634B	TALA49 D
YDBD1125S3/E3	1000	800	1125	900	12M26G900/6	Elec	FLD634D	TALA49 E
YDBD1250S3/E3	1138	910	1250	1000	12M26G1000/6	Elec	FLD634E	-
YDBD1250S3/E3-1	1125	900	1250	1000	12M33G1000/6	Elec	FLD634E	-
YDBD1375S3/E3	1250	1000	1375	1100	12M33G1100/6	Elec	FLD634F	-
YDBD1500S3/E3	1365	1092	1500	1200	12M33G1200/6	Elec	FLD634G	-

50 Hz FAWDE line

Model	Prime		Standby		Engine	Control	Alternator	Dimension (LxWxH)(mm)			Battery
	kVA	kW	kVA	kW				Silent type	Open Frame type	Compact type	
Single phase											
YDW13E/S	12	12	13	13	4DW81-23D	M/E	Y164D/1P	1760*850*1150	1350*740*1020	1450*790*1050	45Ah
YDW18E/S	16	16	18	18	4DW91-29D	M/E	Y184E/1P	1890*900*1150	1500*780*1050	1600*840*1100	60Ah
YDW22E/S	20	20	22	22	4DW92-35D	M/E	Y184FS-T/1P	1950*900*1150	1500*780*1050	1600*840*1100	60Ah
YDW26E/S	24	24	26	26	4DW92-39D	M/E	Y184H/1P	2270*900*1150	1500*780*1050	1820*860*1147	80Ah
Three phase											
YDW17E3/S3	15	12	17	13	4DW81-23D	M/E	Y164D	1760*850*1150	1350*740*1020	1450*790*1050	45Ah
YDW22E3/S3	20	16	22	18	4DW91-29D	M/E	Y184ES	1890*900*1150	1500*780*1050	1600*840*1100	60Ah
YDW28E3/S3	25	20	28	22	4DW92-35D	M/E	Y184FS	1950*900*1150	1500*780*1050	1600*840*1100	60Ah
YDW33E3/S3	30	24	33	26	4DW92-39D	M/E	Y184G	1950*900*1150	1500*780*1050	1600*840*1100	60Ah
YDW44E3/S3	40	32	44	35	4DX21-53D	M/E	Y184J	2300*980*1200	1660*850*1160	1820*860*1147	2*80Ah
YDW55E3/S3	50	40	55	44	4DX22-65D	M/E	Y224D	2300*980*1200	1660*850*1160	2200*970*1200	2*80Ah
YDW66E3/S3	60	48	66	53	4DX23-78D	M/E	Y224E	2450*980*1200	1960*850*1400	2200*970*1200	2*80Ah

60 Hz FAWDE line

Model	Prime		Standby		Engine	Alternator	Dimension (LxWxH)(mm)			Battery
	kVA	kW	kVA	kW			Silent type	Open Frame type	Compact type	
Single phase										
YDW17E/S	15	15	17	17	4DW81-28D	Y184ES/1P	1760*850*1150	1350*740*1020	1450*790*1050	45Ah
YDW24E/S	22	22	24	24	4DW91-38D	Y184FS/1P	1890*900*1150	1500*780*1050	1600*840*1100	60Ah
YDW28E/S	25	25	28	28	4DW92-42D	Y184G/1P	1950*900*1150	1500*780*1050	1600*840*1100	60Ah
YDW33E/S	30	30	33	33	4DW93-50D	Y184H/1P	2270*900*1150	1500*780*1050	1820*860*1147	80Ah
Three phase										
YDW22E3/S3	19	15	22	17	4DW81-28D	Y164D	1760*850*1150	1350*740*1020	1450*790*1050	45Ah
YDW30E3/S3	27	22	30	24	4DW91-38D	Y184E	1890*900*1150	1500*780*1050	1600*840*1100	60Ah
YDW34E3/S3	31	25	34	28	4DW92-42D	Y184FS	1950*900*1150	1500*780*1050	1600*840*1100	60Ah
YDW41E3/S3	37	30	41	33	4DW93-50D	Y184G	1950*900*1150	1500*780*1050	1600*840*1100	60Ah
YDW50E3/S3	45	36	50	40	4DX21-61D	Y184H	2300*980*1200	1660*850*1160	1820*860*1147	2*80Ah
YDW62E3/S3	56	45	62	50	4DX22-75D	Y224D	2300*980*1200	1660*850*1160	2200*970*1200	2*80Ah
YDW76E3/S3	69	55	76	60	4DX23-90D	Y224E	2450*980*1200	1960*850*1400	2200*970*1200	2*80Ah

YuChai line 50 Hz

Model	Prime		Standby		Diesel Engine	Emission	Control	Alternator
	kVA	kW	kVA	kW				
Single phase								
YDYC22E/S	20	20	22	22	YCD4V12D-35	T2	E	FLD184FS-T/1P
Three phase								
YDYC28E3/S3	25	20	28	22	YCD4V12D-35	T2	E	FLD184FS
YDYC41E3/S3	38	30	41	33	YCD4V22D-55	T2	E	FLD184H
YDYC41E3/S3	38	30	41	33	YC4D60-D25	T2	E	FLD184H
YDYC69E3/S3	63	50	69	55	YC4D90Z-D25	T2	E	FLD224EL
YDYC80E3/S3	75	60	80	64	YC4A100Z-D25	T2	E	FLD224G
YDYC113E3/S3	100	80	113	90	YC4A140L-D25	T2	E	FLD274C
YDYC138E3/S3	125	100	138	110	YC4A180L-D20	T2	E	FLD274DL
YDYC165E3/S3	150	120	165	132	YC6B205L-D20	T2	E	FLD274ES
YDYC200E3/S3	188	150	200	160	YC6A245L-D21	T2	E	FLD274HS
YDYC275E3/S3	250	200	275	220	YC6MK350L-D20	T2	E	FLD274K
YDYC344E3/S3	313	250	344	275	YC6MK420L-D20	T2	E	FLDK444D
YDYC413E3/S3	375	300	413	330	YC6MJ500L-D21	T2	E	FLD444F
YDYC500E3/S3	450	360	500	400	YC6T600L-D22	T2	E	FLD544C
YDYC550E3/S3	500	400	550	440	YC6T660L-D20	T2	E	FLD544D

YuChai line 60 Hz

Model	Prime		Standby		Diesel Engine	Emission	Control	Alternator
	kVA	kW	kVA	kW				
Three phase								
YDYC41E3/S3	38	30	41	33	YC4D65-D20	T2	E	FLD184G
YDYC63E3/S3	60	48	63	50	YC4D80Z-D20	T2	E	FLD224D
YDYC75E3/S3	69	55	75	60	YC4D100Z-D20	T2	E	FLD224E
YDYC113E3/S3	100	80	113	90	YC6B130Z-D20	T2	E	FLD224G
YDYC125E3/S3	113	90	125	100	YC6B160Z-D20	T2	E	FLD274C
YDYC163E3/S3	150	120	163	130	YC6B210L-D20	T2	E	FLD274DL
YDYC200E3/S3	180	144	200	160	YC6A245L-D20	T2	E	FLD274ES
YDYC275E3/S3	250	200	275	220	YC6MK360L-D20	T2	E	FLD274J
YDYC344E3/S3	313	250	344	275	YC6MK420L-D21	T2	E	FLD274K
YDYC413E3/S3	375	300	413	330	YC6MJ515L-D22	T2	E	FLD444D
YDYC550E3/S3	500	400	550	440	YC6T660L-D21	T2	E	FLDK444F

50 Hz YORKING

Model	Prime		Standby		Engine	Alternator	Dimension (LxWxH)(mm)	Battery
	kVA	kW	kVA	kW			Compact type	
Single phase								
YDF14S-E	13	13	14	14	Y4YT23-20D	Y164D/1P	1600*840*1100	60Ah
YDF18S-E	16	16	18	18	Y4YT23-20D	Y184E/1P	1600*840*1100	60Ah
YDF22S-E	20	20	22	22	YN4100DS-30	Y184F-T/1P	1770*900*1200	80Ah
YDF28S-E	24	24	26	26	YN4100DS-30	Y184H/1P	1870*900*1200	80Ah
Three phase								
YDF18S3-E	16	13	18	14	Y4YT23-20D	Y164D	1600*840*1100	60Ah
YDF22S3-E	20	16	22	18	Y4YT23-20D	Y184ES	1600*840*1100	60Ah
YDF28S3-E	25	20	28	22	YN4100DS-30	Y184FS	1770*900*1200	80Ah
YDF33S3-E	30	24	33	26	YN4100DS-30	Y184G	1770*900*1200	80Ah
YDF40S3-E	37	30	41	33	YN4105DS-38	Y184H	1870*900*1200	80Ah
YDF45S3-E	41	33	45	36	YN4100ZDS-42	Y224C	2080*970*1237	2*80Ah
YDF55S3-E	50	40	55	44	YN4105ZDS	Y224D	2080*970*1237	2*80Ah
YDF61S3-E	55	44	61	49	YN4105ZDS	Y224E	2080*970*1237	2*80Ah
YDF70S3-E	62	50	70	56	YN4105ZLDS	Y224EL	2200*970*1250	2*80Ah
YDF89S3-E	80	64	89	71	Y4RT55-88D	Y224G	2200*970*1360	2*80Ah
YDF96S3-E	88	70	96	77	Y4RT55-88D	Y274C	2200*1050*1400	2*80Ah
YDF110S3-E	100	80	110	88	Y4RT55-110D	Y274C	2350*1130*1520	2*80Ah
YDF124S3-E	112	90	124	99	Y6RT80-132D	Y274D	2660*1130*1520	2*80Ah

Air cooled Genset 50 Hz@1500rpm

Model	Prime		Standby		Diesel Engine		Alternator
	kVA	kW	kVA	kW	Model	Aspiration	
YDE15E3/S3	14	11	15	12	F2L912	Natural	Y164D
YDE26E3/S3	24	19	26	21	F3L912	Natural	Y184FS
YDE36E3/S3	33	26	36	29	F4L912	Natural	Y184H
YDE45E3/S3	41	33	45	36	F4L912T	Turbocharged	Y224C
YDE53E3/S3	48	38	53	42	F6L912	Natural	Y224D
YDE56E3/S3	51	41	56	45	F6L913	Natural	Y224E
YDE67E3/S3	61	49	67	54	F6L912T	Turbocharged	Y224E

Air cooled Genset 60 Hz@1800rpm

Model	Prime		Standby		Diesel Engine		Alternator
	kVA	kW	kVA	kW	Model	Aspiration	
YDE20E3/S3	18	14	20	15	F2L912	Natural	Y164D
YDE32E3/S3	29	23	32	25	F3L912	Natural	Y184E
YDE42E3/S3	38	30	42	33	F4L912	Natural	Y184G
YDE54E3/S3	48	38	53	42	F4L912T	Turbocharged	Y184J
YDE66E3/S3	60	48	66	53	F6L912	Natural	Y224D
YDE72E3/S3	65	52	72	57	F6L913	Natural	Y224E
YDE80E3/S3	73	58	80	64	F6L912T	Turbocharged	Y224E

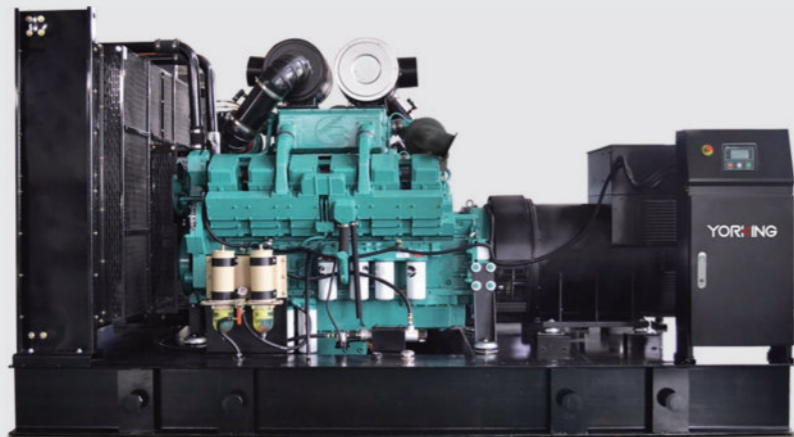
60 Hz YORKING

Model	Prime		Standby		Engine	Alternator	Dimension (LxWxH)(mm)	Battery
	kVA	kW	kVA	kW			Compact type	
YDF14S-E	13	13	14	14	Y4YT23-20D	Y164D/1P	1600*840*1100	60Ah
YDF18S-E	16	16	18	18	Y4YT23-20D	Y184E/1P	1600*840*1100	60Ah
YDF22S-E	20	20	22	22	YN4100DS-30	Y184F-T/1P	1770*900*1200	80Ah
YDF28S-E	24	24	26	26	YN4100DS-30	Y184G/1P	1770*900*1200	80Ah
Three phase								
YDF18S3-E	16	13	18	14	Y4YT23-20D	Y164C	1600*840*1100	60Ah
YDF22S3-E	20	16	22	18	Y4YT23-20D	Y164D	1600*840*1100	60Ah
YDF28S3-E	25	20	28	22	YN4100DS-30	Y184ES	1770*900*1200	80Ah
YDF33S3-E	30	24	33	26	YN4100DS-30	Y184FS	1770*900*1200	80Ah
YDF40S3-E	37	30	41	33	YN4105DS-38	Y184G	1770*900*1200	80Ah
YDF45S3-E	41	33	45	36	YN4100ZDS-42	Y184H	2080*970*1237	2*80Ah
YDF55S3-E	50	40	55	44	YN4105ZDS	Y184J	2080*970*1237	2*80Ah
YDF61S3-E	55	44	61	49	YN4105ZDS	Y224D	2080*970*1237	2*80Ah
YDF70S3-E	62	50	70	56	YN4105ZLDS	Y224D	2200*970*1250	2*80Ah
YDF89S3-E	80	64	89	71	Y4RT55-88D	Y224F	2200*970*1360	2*80Ah
YDF96S3-E	88	70	96	77	Y4RT55-88D	Y224F	2200*970*1360	2*80Ah
YDF110S3-E	100	80	110	88	Y4RT55-110D	Y224G	2350*1130*1520	2*80Ah
YDF124S3-E	112	90	124	99	Y6RT80-132D	Y274C	2660*1130*1520	2*80Ah



50 Hz Cummins line

Model	Prime		Standby		Diesel Engine	Control	Alternator	DimensionLxWxH(mm)				Battery
	kVA	kW	kVA	kW				Yorking	Silent	Open frame	Compact	
Single phase												
YDDC19E/S	17	17	19	19	4B3.9-G11	M	Y184FS/1PC	2250*970*1350	1760*760*1280	1700*840*1250	2200*960*1400	60Ah
YDDC24E/S	22	22	24	24	4B3.9-G1	M	Y184H/1P	2350*970*1350	1760*760*1280	1820*860*1250	2200*960*1400	60Ah
YDDC24E/S-1	22	22	24	24	4B3.9-G2	E	Y184H/1P	2350*970*1350	1760*760*1280	1820*860*1250	2200*960*1400	60Ah
YDDC27E/S	25	25	27	27	4B3.9-G12	E	Y184H/1P	2350*970*1350	1760*760*1280	1820*860*1250	2200*960*1400	60Ah
Three phase												
YDDC24E3/S3	20	17	24	19	4B3.9-G11	M	Y184E	2200*970*1350	1760*760*1280	1820*860*1250	2200*960*1400	60Ah
YDDC30E3/S3	27	22	30	24	4B3.9-G1	M	Y184F	2250*970*1350	1760*760*1280	1820*860*1250	2200*960*1400	60Ah
YDDC30E3/S3-1	27	22	30	24	4B3.9-G2	E	Y184F	2250*970*1350	1760*760*1280	1820*860*1250	2200*960*1400	60Ah
YDDC34E3/S3	30	25	34	27	4B3.9-G12	E	Y184G	2250*970*1350	1760*760*1280	1820*860*1250	2200*960*1400	60Ah
YDDC44E3/S3	40	32	44	35	4BT3.9-G1	M	Y184J	2350*1000*1350	1800*760*1280	2200*900*1300	2350*970*1500	2*60Ah
YDDC44E3/S3-1	40	32	44	35	4BT3.9-G2	E	Y184J	2350*1000*1350	1800*760*1280	2200*900*1300	2350*970*1500	2*60Ah
YDDC62E3/S3	56	45	62	50	4BTA3.9-G2	E	Y224E	2450*1020*1350	1800*760*1340	2350*930*1300	2350*970*1500	2*60Ah
YDDC70E3/S3	65	52	70	56	4BTA3.9-G2	E	Y224F	2450*1020*1350	1800*760*1340	2350*930*1300	2350*970*1500	2*60Ah
YDDC90E3/S3	80	64	90	72	4BTA3.9-G11	E	Y224G	2500*1020*1450	1800*760*1340	2450*930*1300	2500*970*1500	2*80Ah
YDDC103E3/S3	94	75	103	82	6BT5.9-G1	M	Y274C	2800*1070*1550	2200*830*1450	2800*1050*1450	2800*1070*1600	2*80Ah
YDDC103E3/S3-1	94	75	103	82	6BT5.9-G2	E	Y274C	2800*1070*1550	2200*830*1450	2800*1050*1450	2800*1070*1600	2*80Ah
YDDC115E3/S3	105	84	115	92	6BT5.9-G2	E	Y274D	2800*1070*1550	2200*830*1450	2800*1050*1450	2800*1070*1600	2*80Ah



Model	Prime		Standby		Diesel Engine	Control	Alternator	DimensionLxWxH(mm)		Battery
	kVA	kW	kVA	kW				Yorking	Silent	
YDDC125E3/S3	115	92	125	100	6BTA5.9-G2	E	Y274DL	2850*1070*1550	2200*830*1450	2*80Ah
YDDC145E3/S3	135	108	145	116	6BTAA5.9-G2	E	Y274E	2900*1070*1580	2200*830*1450	2*80Ah
YDDC165E3/S3	150	120	165	132	6BTAA5.9-G12	E	Y274EL	2900*1070*1580	2200*830*1450	2*80Ah
YDDC200E3/S3	180	145	200	160	6CTA8.3-G1	M	Y274HS	3200*1070*1700	2500*880*1550	2*120Ah
YDDC200E3/S3-1	180	145	200	160	6CTA8.3-G2	E	Y274HS	3200*1070*1700	2500*880*1550	2*120Ah
YDDC215E3/S3	200	160	215	172	6CTAA8.3-G2	E	Y274H	3350*1170*1700	2500*880*1550	2*120Ah
YDDC264E3/S3	250	200	264	211	6LTAA8.9-G2	E	Y274K	3550*1270*1900	2600*880*1600	2*150Ah
YDDC275E3/S3	250	200	275	220	6LTAA8.9-G3	E	Y274K	3550*1270*1900	2600*880*1600	2*150Ah
YDDC300E3/S3	270	216	300	240	6LTAA9.5-G3	E	Y444D	3900*1370*2150	3000*1100*1700	2*150Ah
YDDC350E3/S3	320	256	350	280	6LTAA9.5-G1	E	Y444E	3900*1370*2150	3000*1100*1700	2*150Ah
YDCC438E3/S3	400	320	438	350	QSNT-G3	E	YK444F	4200*1570*2200	3100*1150*1850	2*200Ah
YDDC475E3/S3	438	350	475	380	6ZTAA13-G2	E	Y544C	4400*1700*2200	3200*1350*2000	2*200Ah
YDDC500E3/S3	475	380	500	400	QSZ13-G3	ECU	Y544D	3200*1350*2000	3200*1350*2000	2*200Ah
YDDC500E3/S3-1	450	360	500	400	QSZ13-G5	ECU	Y544C	3200*1350*2000	3200*1350*2000	2*200Ah
YDCC560E3/S3	500	400	560	450	KTA19-G3A	E	Y544D	3200*1350*2000	3200*1350*2000	2*200Ah
YDCC630E3/S3	525	420	630	505	KTAA19-G5	E	Y544DL	3400*1350*2050	3400*1350*2050	2*200Ah
YDCC650E3/S3	575	460	650	520	KTAA19-G6	E	Y544E	3400*1350*2050	3400*1350*2050	2*200Ah
YDCC700E3/S3	625	500	700	560	KTA19-G8A	E	Y544FS	4800*1800*2200	3650*1600*2050	2*200Ah
YDCC750E3/S3	680	545	750	600	KTA19-G9A	E	Y634B	4800*1800*2200	3650*1600*2050	2*200Ah
YDCC825E3/S3	750	600	825	660	KTA38-G2	E	Y634B	ISO 20ft GP	4550*2100*2320	2*200Ah
YDCC888E3/S3	800	640	888	710	KTA38-G2B	E	Y634C	ISO 20ft GP	4550*2100*2320	2*200Ah
YDCC1000E3/S3	910	728	1000	800	KTA38-G2A	E	Y634D	ISO 20ft GP	4550*2100*2320	2*200Ah
YDCC1100E3/S3	1000	800	1100	880	KTA38-G5	E	Y634E	ISO 20ft GP	4650*2100*2320	2*200Ah
YDCC1375E3/S3	1250	1000	1375	1100	KTA50-G3E	E	Y634G	ISO 40ft HQ	4950*2100*2320	2*200Ah
YDCC1500E3/S3	1375	1100	1500	1200	KTA50-G7E	E	Y734A	ISO 40ft HQ	5100*2150*2400	2*200Ah
YDCC1625E3/S3	1500	1200	1625	1300	KTA50-G8E	E	Y734B	ISO 40ft HQ	5100*2150*2400	2*200Ah
YDCC1650E3/S3	1475	1180	1650	1320	KTA50-GS8	E	Y734B	ISO 40ft HQ	5100*2150*2400	2*200Ah
YDCC1875E3/S3	1675	1340	1875	1500	KTA50-G15X	E	Y734C	ISO 40ft HQ	5100*2150*2400	2*200Ah

60 Hz Cummins line

Model	Prime		Standby		Diesel Engine	Alternator	DimensionLxWxH(mm)				Battery
	kVA	kW	kVA	kW			Silent	Open frame	Compact	Ultra silent	
Single phase 120V/1P											
YDDC22E/S	20	20	22	22	4B3.9-G11	Y184FS-T/1PC	2250*970*1350	1760*760*1280	1750*840*1250	2200*960*1400	60Ah
YDDC28E/S	24	24	27	27	4B3.9-G2	Y184G1PC	2250*970*1350	1760*760*1280	1820*860*1250	2200*960*1400	60Ah
YDDC30E/S	28	28	30	30	4B3.9-G12	Y184H/1PC	2350*970*1350	1760*760*1280	1820*860*1250	2200*960*1400	60Ah
Three phase 127/220V/3P											
YDDC28E3/S3	25	20	28	22	4B3.9-G11	Y184ES	2200*970*1350	1760*760*1280	1820*860*1250	2200*960*1400	60Ah
YDDC35E3/S3	30	24	34	27	4B3.9-G2	Y184FS	2250*970*1350	1760*760*1280	1820*860*1250	2200*960*1400	60Ah
YDDC38E3/S3	35	28	38	30	4B3.9-G12	Y184G	2250*970*1350	1760*760*1280	1820*860*1250	2200*960*1400	60Ah
YDDC46E3/S3	42	33	46	36	4BT3.9-G2	Y184H	2350*1000*1350	1800*760*1280	2200*900*1300	2350*970*1500	2*60Ah
YDDC68E3/S3	62	50	68	55	4BTA3.9-G2	Y224D	2350*1000*1350	1800*760*1280	2350*930*1300	2350*970*1500	2*60Ah
YDDC85E3/S3	75	60	85	68	4BTA3.9-G2	Y224EL	2450*1020*1350	1800*760*1340	2450*930*1300	2350*970*1500	2*60Ah
YDDC100E3/S3	88	70	100	80	4BTA3.9-G11	Y224F	2450*1020*1350	1800*760*1340	2800*1050*1300	2500*970*1500	2*80Ah
YDDC110E3/S3	100	80	110	90	6BT5.9-G2	Y224G	2850*1070*1550	2200*830*1450	2800*1050*1450	2800*1070*1600	2*80Ah
YDDC138E3/S3	125	100	138	110	6BT5.9-G2	Y274C	2850*1070*1550	2200*830*1450	2800*1050*1450	2800*1070*1600	2*80Ah



Model	Prime		Standby		Diesel Engine	Alternator	DimensionLxWxH(mm)		Battery
	kVA	kW	kVA	kW			Silent	Open frame	
YDCC156E3/S3	145	116	156	125	6BTAA5.9-G2	Y274DL	3000*1070*1600	2200*830*1450	2*80Ah
YDCC175E3/S3	160	128	175	140	6BTAA5.9-G12	Y274E	3100*1070*1600	2200*830*1450	2*80Ah
YDCC209E3/S3	190	152	209	167	6CTAA8.3-G2	Y274F	3200*1070*1700	2500*880*1550	2*120Ah
YDCC230E3/S3	210	168	230	184	6CTAA8.3-G2	Y274G	3200*1070*1700	2500*880*1550	2*120Ah
YDCC285E3/S3	260	208	285	228	6LTAA8.9-G2	Y274J	3550*1270*1900	2600*880*1600	2*150Ah
YDCC310E3/S3	280	224	310	248	6LTAA8.9-G3	Y274J	3900*1400*2150	3000x1100x1700	2*150Ah
YDCC315E3/S3	285	228	315	252	6LTAA9.5-G3	Y274K	3900*1400*2150	3000x1100x1700	2*150Ah
YDCC350E3/S3	320	256	350	280	6LTAA9.5-G1	Y274K	3900*1400*2150	3000x1100x1700	2*150Ah
YDCC438E3/S3	400	320	438	350	QSNT-G3	YK444E	4200*1570*2200	3100*1150*1850	2*200Ah
YDCC475E3/S3	438	350	475	380	6ZTAA13-G2	Y444F	4400*1700*2200	3200*1350*2000	2*200Ah
YDCC500E3/S3	475	380	500	400	QSZ13-G3	Y444F	4400*1700*2200	3200*1350*2000	2*200Ah
YDCC525E3/S3	475	380	525	420	QSZ13-G5	Y444F	4400*1700*2200	3200*1350*2000	2*200Ah
YDCC625E3/S3	562	450	625	500	KTA19-G3A	Y544C	4400*1700*2200	3200*1350*2000	2*200Ah
YDCC710E3/S3	625	500	710	570	QSK19-G4	Y544D	4800*1800*2200	3400*1350*2050	2*200Ah
YDCC750E3/S3	688	550	750	600	QSK19-G5	Y544DL	4800*1800*2200	3400*1350*2050	2*200Ah
YDCC850E3/S3	775	620	850	680	KT38-G	Y544FS	ISO 20'ft GP	4550*2100*2320	2*200Ah
YDCC960E3/S3	875	700	960	770	KTA38-G1	Y634B	ISO 20'ft GP	4550*2100*2320	2*200Ah
YDCC1000E3/S3	900	725	1000	800	KTA38-G2	Y634C	ISO 20'ft GP	4550*2100*2320	2*200Ah
YDCC1125E3/S3	1000	800	1125	900	KTA38-G2A	Y634D	ISO 20'ft GP	4650*2100*2320	2*200Ah
YDCC1250E3/S3	1125	900	1250	1000	KTA38-G4	Y634E	ISO 40'ft HQ	4950*2100*2320	2*200Ah
YDCC1575E3/S3	1375	1100	1575	1260	KTA50-G3	Y634G	ISO 40'ft HQ	5100*2150*2400	2*200Ah

Model	Prime		Standby		Diesel Engine		Alternator	DimensionLxWxH(mm)		Battery
	kVA	kW	kVA	kW	Model	Control	TAL	Silent	Open frame	
Single phase										
YDPK8E/S	7	7	8	8	403D-11G	M	TALA40 C-S	1710*850*1150	1400*750*1100	60Ah
YDPK11E/S	10	10	11	11	403D-15G	M	TALA40 C-S	1710*850*1150	1400*750*1100	60Ah
YDPK13E/S	12	12	13	13	403A-15G2	M	TALA40 C1-S	1710*850*1150	1400*750*1100	60Ah
YDPK18E/S	16	16	18	18	404D-22G	M	TALA40 F-S	1950*900*1200	1400*760*1140	60Ah
Three phase										
YDPK10E3/S3	9	7	10	8	403D-11G	M	TALA40 C	1760*850*1150	1400*750*1100	60Ah
YDPK15E3/S3	13	10	15	11	403D-15G	M	TALA40 C	1890*900*1150	1400*750*1100	60Ah
YDPK16E3/S3	15	12	17	13	403A-15G2	M	TALA40 D	1890*900*1150	1400*750*1100	60Ah
YDPK22E3/S3	20	16	22	18	404D-22G	M	TALA40 F	1950*900*1200	1400*760*1140	60Ah
YDPK33E3/S3	30	24	33	26	1103A-33G	M	TALA42 C	2200*1000*1400	1850*950*1280	60Ah
YDPK50E3/S3	45	36	50	40	1103A-33TG1	M	TALA42 F	2300*1000*1400	1850*1000*1280	80Ah
YDPK66E3/S3	60	48	66	53	1104D-44TG2	E	TALA42 H	2520*1050*1450	1950*1000*1273	80Ah
YDPK72E3/S3	65	52	72	57	1104A-44TG1	M	TALA42 H	2520*1050*1450	1950*1000*1273	80Ah
YDPK89E3/S3	80	64	89	71	1104A-44TG2	M	TALA44 C	2520*1050*1450	1980*1000*1323	80Ah
YDPK112E3/S3	101	80	112	90	1104C-44TAG2	E	TALA44 D	2800*1100*1600	1980*1000*1326	80Ah
YDPK150E3/S3	135	108	150	120	1106A-70TG1	M	TALA44 H	3250*1100*1750	2340*1100*1504	120Ah
YDPK165E3/S3	150	120	165	132	1106A-70TAG2	M	TALA44 J	3250*1100*1750	2340*1100*1504	120Ah
YDPK200E3/S3	180	144	200	160	1106A-70TAG3	M	TALA44 L	3650*1200*1950	2650*1200*1520	120Ah
YDPK220E3/S3	200	160	220	176	1106A-70TAG4	E	TALA44 M	3650*1200*1950	2650*1200*1520	120Ah
YDPK275E3/S3	250	200	275	220	1206A-E70TTAG3	ECM	TALA46 D	3800*1350*2050	2800*1250*1850	120Ah
YDPK339E3/S3	307	246	339	271	1706A-E93TAG1 L	ECM	TALA46 F	4150*1400*2200	3100*1250*1900	2*120Ah
YDPK400E3/S3	350	280	400	320	2206C-E13TAG2 L	ECM	TALA46 H	4250*1500*2250	3400*1350*1950	2*150Ah
YDPK450E3/S3	400	320	450	360	2206C-E13TAG3 L	ECM	TALA473 A	4250*1500*2250	3400*1350*1950	2*150Ah
YDPK500E3/S3	455	364	500	400	2506C-E15TAG1 L	ECM	TALA473 B	3800*1600*2200	3700*1450*2000	2*150Ah
YDPK550E3/S3	500	400	550	440	2506C-E15TAG2 L	ECM	TALA473 C	3800*1600*2200	3700*1450*2000	2*150Ah
YDPK650E3/S3	591	473	650	520	2806C-E18TAG1A L	ECM	TALA473 E	4100*1800*2250	3800*1600*2120	2*180Ah
YDPK660E3/S3	600	480	660	528	2806D-E18TAG1A L	ECM	TALA473 E	4100*1800*2250	3800*1600*2120	2*180Ah
YDPK700E3/S3	650	520	700	560	2806A-E18TAG2 L	ECM	TALA473 F	4100*1800*2250	3800*1600*2150	2*180Ah
YDPK780E3/S3	706	565	780	624	2806A-E18TTAG4	ECM	TALA49 B	4250*1900*2250	4000*1700*2120	2*180Ah
YDPK850E3/S3	770	616	850	680	2806A-E18TTAG5	ECM	TALA49 C	4300*1950*2250	4000*1700*2120	2*180Ah
YDPK820E3/S3	746	597	820	656	4006-23TAG2A	electric/DC-6	TALA49 B	ISO 20ft GP	4350*1800*2200	2*200Ah
YDPK900E3/S3	800	641	900	718	4006-23TAG3A	electric/DC-6	TALA49 C	ISO 20ft GP	4350*1800*2200	2*200Ah
YDPK1000E3/S3	911	728	1002	802	4008TAG1A	electric/DC-6	TALA49 D	ISO 20ft GP	4750*2200*2320	2*200Ah
YDPK1100E3/S3	1000	818	1100	880	4008TAG2A	electric/DC-6	TALA49 E	ISO 20ft GP	4750*2200*2320	2*200Ah

Model	Prime		Standby		Diesel Engine		Alternator	DimensionLxWxH(mm)		Battery
	kVA	kW	kVA	kW	Model	Control	TAL	Silent	Open frame	
Single phase										
YDPK10E/S	9	9	10	10	403D-11G	M	TALA40 C-S	1710*850*1150	1400*750*1100	60Ah
YDPK14E/S	12	12	14	14	403D-15G	M	TALA40 C1-S	1710*850*1150	1400*750*1100	60Ah
YDPK16E/S	14	14	16	16	403A-15G2	M	TALA40 D-S	1710*850*1150	1400*750*1100	60Ah
YDPK21E/S	19	19	21	21	404D-22G	M	TALA42 A-S	1950*900*1200	1400*760*1140	60Ah
Three phase										
YDPK12E3/S3	11	9	12	10	403D-11G	M	TALA40 C	1760*850*1150	1400*750*1100	60Ah
YDPK17E3/S3	15	12	17	13	403D-15G	M	TALA40 D	1890*900*1150	1400*750*1100	60Ah
YDPK20E3/S3	18	14	20	16	403A-15G2	M	TALA40 F	1890*900*1150	1400*750*1100	60Ah
YDPK26E3/S3	24	19	26	21	404D-22G	M	TALA40 G	1950*900*1200	1400*760*1140	60Ah
YDPK38E3/S3	35	28	38	31	1103A-33G	M	TALA42 E	2200*1000*1400	1850*950*1280	60Ah
YDPK59E3/S3	53	43	59	47	1103A-33TG1	M	TALA42 H	2300*1000*1400	1850*1000*1280	80Ah
YDPK75E3/S3	68	55	75	60	1103A-33TG2	M	TALA44 C	2300*1000*1400	1850*1000*1280	80Ah
YDPK83E3/S3	75	60	84	66	1104A-44TG1	M	TALA44 C	2520*1050*1450	1950*1000*1273	80Ah
YDPK100E3/S3	90	72	100	80	1104C-44TAG1	E	TALA44 D	2800*1100*1600	1980*1000*1326	80Ah
YDPK125E3/S3	112	90	125	100	1104C-44TAG2	E	TALA44 E	2800*1100*1600	1980*1000*1326	80Ah
YDPK166E3/S3	150	120	165	132	1106A-70TG1	M	TALA44 K	3250*1100*1750	2340*1100*1504	120Ah
YDPK185E3/S3	168	135	185	150	1106A-70TAG2	M	TALA44 L	3250*1100*1750	2340*1100*1504	120Ah
YDPK217E3/S3	197	158	219	175	1106A-70TAG3	M	TALA44 M	3650*1200*1950	2650*1200*1520	120Ah
YDPK276E3/S3	250	200	275	220	1206A-E70TTAG3	ECM	TALA46 E	3800*1350*2050	2800*1250*1850	120Ah
YDPK395E3/S3	357	286	395	316	1706A-E93TAG1	ECM	TALA46 H	4150*1400*2200	3100*1250*1900	2*120Ah
YDPK439E3/S3	400	320	438	350	2206C-E13TAG2/3	ECM	TALA473 A	4250*1500*2250	3400*1350*1950	2*150Ah
YDPK501E3/S3	438	350	500	400	2206A-E13TAG6	ECM	TALA473 A	4250*1500*2250	3400*1350*1950	2*150Ah
YDPK551E3/S3	500	400	550	440	2506C-E15TAG1/G2	ECM	TALA473 C	3800*1600*2200	3700*1450*2000	2*150Ah
YDPK646E3/S3	585	468	646	517	2506C-E15TAG3	ECM	TALA473 E	3800*1600*2200	3700*1450*2000	2*150Ah
YDPK687E3/S3	625	500	687	550	2806A-E18TAG2	ECM	TALA473 F	4100*1800*2250	3800*1600*2150	2*180Ah
YDPK750E3/S3	681	545	750	600	2806A-E18TAG3	ECM	TALA49 B	4300*1950*2250	4000*1700*2120	2*180Ah
YDPK826E3/S3	750	600	825	660	4006-23TAG2A	electric/DC-6	TALA49 B	ISO 20ft GP	4350*1800*2200	2*200Ah
YDPK944E3/S3	850	680	944	755	4006-23TAG3A	electric/DC-6	TALA49 D	ISO 20ft GP	4350*1800*2200	2*200Ah
YDPK944E3/S3	875	700	963	770	4008TAG1A	electric/DC-6	TALA49 D	ISO 20ft GP	4750*2200*2320	2*200Ah
YDPK1101E3/S3	1000	800	1100	875	4008TAG2	electric/DC-6	TALA49 E	ISO 20ft GP	4750*2200*2320	2*200Ah

50 Hz Doosan line

Model	Prime		Standby		Diesel Engine	Alternator
	kVA	kW	kVA	kW		
YDD165E3/S3	148	119	165	132	DP086TA	ECP34 1L4C
YDD185E3/S3	168	134	185	148	P086TI-1	ECO38 1S4C
YDD225E3/S3	200	160	225	180	P086TI	ECO38 2S4C
YDD254E3/S3	225	180	254	203	DP086LA	ECO38 1M4C
YDD300E3/S3	273	218	300	246	P126TI	ECO38 1L4C
YDD330E3/S3	300	240	330	267	P126TI-II	ECO38 1L4C
YDD406E3/S3	365	292	406	325	DP126LB	ECO40 1S4B
YDD468E3/S3	407	326	468	374	P158LE	ECO40 2S4B
YDD510E3/S3	463	370	510	409	DP158LC	ECO40 3S4B
YDD582E3/S3	528	423	582	466	DP158LD	ECO40 1L4B
YDD632E3/S3	573	459	632	506	DP180LA	ECO40 1.5L4B
YDD700E3/S3	636	509	700	562	DP180LB	ECO40 2L4B
YDD758E3/S3	688	551	758	607	DP222LB	ECO40 VL4B
YDD829E3/S3	750	600	829	663	DP222LC	ECO40 VL4B
YDD1000E3/S3	900	720	1000	800	Dx22	ECO43 2S4A

60 Hz Doosan line

Model	Prime		Standby		Diesel Engine	Alternator
	kVA	kW	kVA	kW		
YDD201E3/S3	180	144	201	161	DP086TA	ECP34 1L4C
YDD213E3/S3	193	154	213	170	P086TI-1	ECP34 2L4C
YDD250E3/S3	228	183	250	200	P086TI	ECO38 2S4C
YDD285E3/S3	255	204	285	228	DP086LA	ECO38 1M4C
YDD334E3/S3	310	248	334	267	P126TI	ECO38 1L4C
YDD385E3/S3	344	275	385	308	P126TI-II	ECO38 1L4C
YDD444E3/S3	401	321	444	355	P158LE-1	ECO38 2L4C
YDD510E3/S3	443	355	510	408	P158LE	ECO40 1S4B
YDD576E3/S3	520	416	576	461	DP158LC	ECO40 2S4B
YDD626E3/S3	566	453	626	501	DP158LD	ECO40 3S4B
YDD695E3/S3	630	504	695	556	DP180LA	ECO40 1L4B
YDD750E3/S3	678	543	750	600	DP180LB	ECO40 1.5L4B
YDD824E3/S3	745	596	824	659	DP222LA	ECO40 1.5L4B
YDD876E3/S3	793	635	876	701	DP222LB	ECO40 2L4B
YDD930E3/S3	842	674	930	744	DP222LC	ECO40 VL4B
YDD1125E3/S3	1000	800	1125	900	Dx22	ECO43 2S4A



50 Hz VOLVO line

Model	Prime		Standby		Diesel Engine	Alternator
	kVA	kW	kVA	kW		
YDV94E3/S3	85	68	94	75	TAD530GE	UCI224G
YDV109E3/S3	100	80	109	87	TAD531GE	UCI274C
YDV142E3/S3	130	104	142	114	TAD532GE	UCI274E
YDV165E3/S3	150	120	165	132	TAD731GE	UCI274F
YDV206E3/S3	188	150	206	165	TAD732GE	UCI274H
YDV220E3/S3	200	160	220	176	TAD733GE	UCI274H
YDV275E3/S3	250	200	275	220	TAD734GE	UCDI274K
YDV346E3/S3	315	252	346	277	TAD1341GE	S4L1D-E41
YDV385E3/S3	350	280	385	308	TAD1342GE	S4L1D-E41
YDV412E3/S3	375	300	412	330	TAD1343GE	S4L1D-F41
YDV450E3/S3	410	328	450	360	TAD1344GE	S4L1D-F41
YDV495E3/S3	450	360	495	396	TAD1345GE	S4L1D-G41
YDV550E3/S3	500	400	550	440	TAD1641GE	S5L1D-C41
YDV650E3/S3	590	473	650	520	TAD1642GE	S5L1D-E41
YDV700E3/S3	630	504	700	560	TWD1643GE	S5L1D-F41

60 Hz VOLVO line

Model	Prime		Standby		Diesel Engine	Alternator
	kVA	kW	kVA	kW		
YDV105E3/S3	96	77	105	85	TAD530GE	UCI274C
YDV125E3/S3	115	92	125	100	TAD531GE	UCI274C
YDV145E3/S3	132	115	145	126	TAD532GE	UCI274E
YDV176E3/S3	160	129	176	142	TAD731GE	UCI274F
YDV226E3/S3	206	165	226	182	TAD732GE	UCI274H
YDV243E3/S3	221	177	243	195	TAD733GE	UCI274H
YDV283E3/S3	258	206	283	226	TAD734GE	UCDI274J
YDV366E3/S3	333	266	366	293	TAD1341GE	S4L1D-D
YDV440E3/S3	400	320	440	352	TAD1342GE	S4L1D-E
YDV500E3/S3	456	365	500	400	TAD1344GE	S4L1D-F
YDV625E3/S3	570	456	625	500	TAD1641GE	HCI544D
YDV688E3/S3	625	500	688	550	TAD1642GE	HCI544E
YDV750E3/S3	688	550	750	600	TWD1643GE	HCI544F

